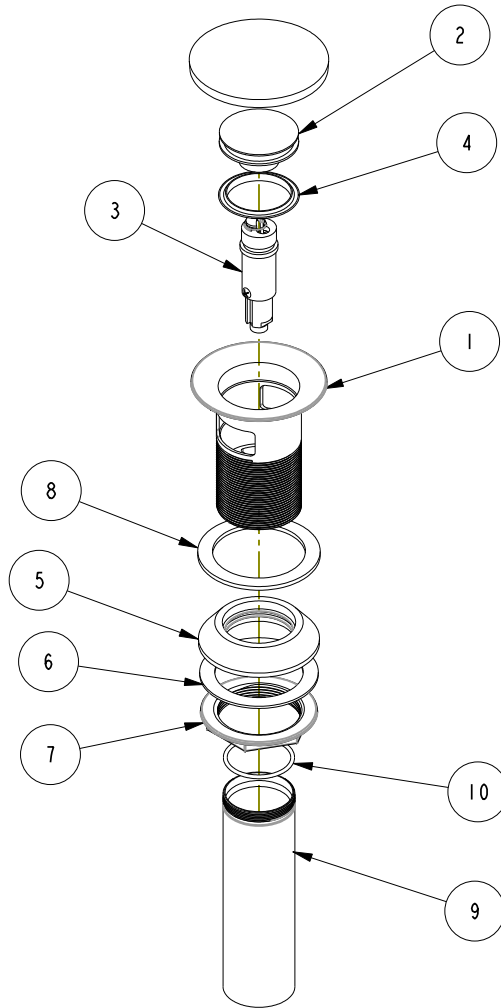
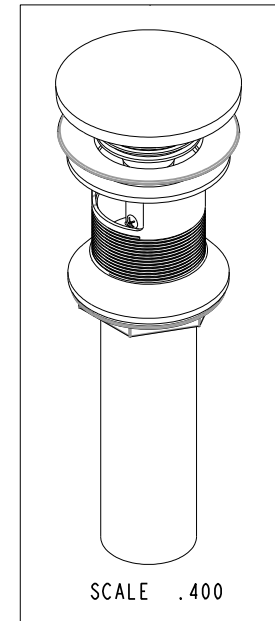


NOTES:

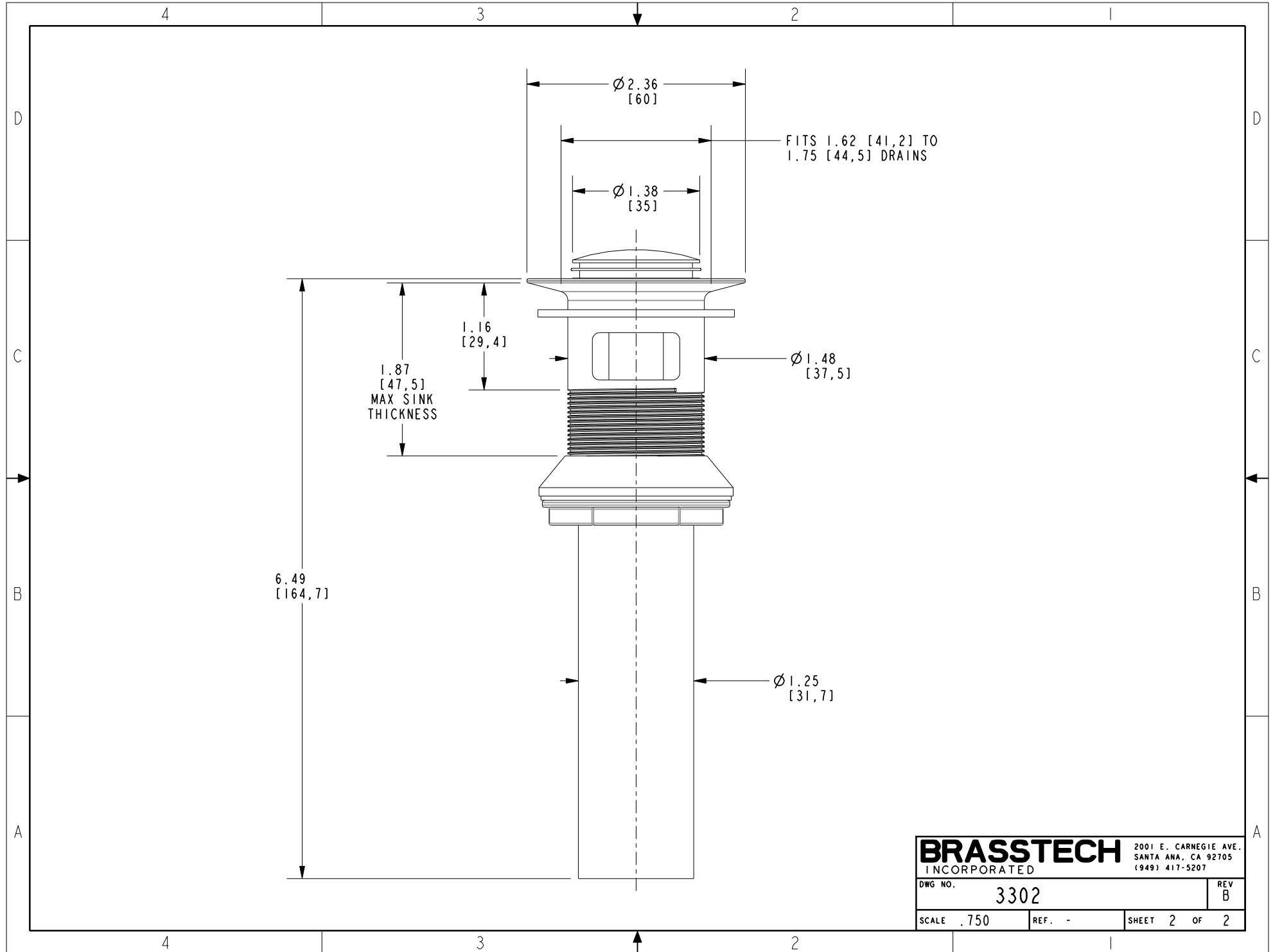
(NI) 1. TO INSPECT ASSEMBLY, FOLLOW FIRST ARTICLE AND IN PROCESS INSPECTION SHEET.



BILL OF MATERIAL (CURRENT LEVEL)				
ITEM	PT/ASSY	DESCRIPTION	TYPE	QTY.
1	20-284	FLANGE ASM	ASSEMBLY	1
2	12587	DRAIN CAP	PART	1
3	1-708	ACTUATOR ASM	ASSEMBLY	1
4	91696	GASKET	PART	1
5	91698	CONE SEAL	PART	1
6	91705	WASHER	PART	1
7	92858	LOCK NUT	PART	1
8	91641	FLANGE WASHER	PART	1
9	12588	LOWER WASTE TUBE	PART	1
10	91699	O-RING	PART	1



TESTING - - - ASSEMBLY - - - PLATING - - - POLISHING - - - MACHINING - - - TOOLING FIXTURE # - - -					- - - - - - - - - - - - - - - REMOVE ALL BURRS AND SHARP EDGES					UNITS ARE: INCHES [MM] TOLERANCES ARE: FRACTIONS DECIMALS ANGLES $\pm 1/16"$.X $\pm .1$ [2.5] $\pm 1^\circ$.XX $\pm .06$ [1.5] (X.XXX) DENOTES CRITICAL DIMS. ALL THREADS ARE CRITICAL DRAWN H. LE 10/26/16 CHECKED V. VU 10/26/16 APPROVED V. VU 10/16/18					BRASSTECH 2001 CARNEGIE AVE. INCORPORATED SANTA ANA, CA 92705 (949) 417-5207 DRAIN, PUSH DOWN, W/ OVERFLOW, FULLY POLISHED DWG NO. 3302 SCALE .300 REF. - SHEET 1 OF 2				
-	B	EN-430011	10/22/21	N.S.	COPYRIGHT 2005 BRASSTECH, INC. THESE DRAWINGS AND THE DESIGNS DEPICTED HEREIN ARE THE PROPRIETARY PROPERTY OF BRASSTECH. ANY USE OR REPRODUCTION IS SUBJECT TO THE EXPRESS APPROVAL OF BRASSTECH. UNAUTHORIZED USE IS STRICTLY PROHIBITED. ALL RIGHTS RESERVED.														
-	A	EN-3525	01/30/18	V.V.															
-	-	EN-3152	10/26/16	V.V.															
ZONE	REV	DESCRIPTION	DATE	APPROVED															



BRASSTECH		2001 E. CARNEGIE AVE.	
INCORPORATED		SANTA ANA, CA 92705	
		(949) 417-5207	
DWG NO.	3302	REV	B
SCALE .750	REF. -	SHEET 2	OF 2