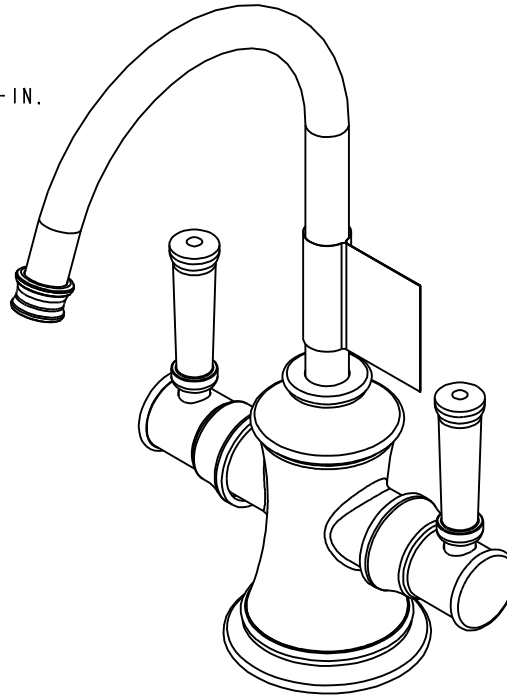


NOTES:

1. TO INSPECT ASSEMBLY, FOLLOW FIRST ARTICLE AND IN PROCESS INSPECTION SHEET.
2. APPLY LOCTITE 680.
3. CUT AND SHORTEN O-RING BY .13" TO .20" IN LENGTH BEFORE INSTALLING.
4. SLIT O-RING BEFORE INSTALLING.
5. APPLY LOCTITE 242.
6. CONNECT WHITE AND RED TUBINGS TOGETHER AND WATER TEST WHOLE UNIT.
7. BAG 92194 IN A SEPARATE BAG.
8. REWORK CARTRIDGE ASSY IF THE HANDLE DOES NOT RETURN TO THE 'OFF' POSITION AUTOMATICALLY AFTER WATER TESTING.
9. INSTALLATION TORQUE: 8-14 LB-FT.
10. INSTALLATION TORQUE: 78 LB-IN +/- 6 LB-IN.
11. LUBRICATE SPRING WITH DOW CORNING III.
12. INSTALLATION TORQUE: 10-14 LB-IN.
13. APPLY THIN FILM OF DOW CORNING III.



BILL OF MATERIAL (CURRENT LEVEL)

| ITEM | PT/ASSY | DESCRIPTION | TYPE | QTY. |
|------|---------|---|----------|------|
| 1 | 13626 | BASE RING | PART | 1 |
| 2 | 91756 | O-RING #2-134, EP, 50 DURO - GREY | PART | 1 |
| 3 | 13629 | HOT & COLD WATER DISPENSER | PART | 1 |
| 4 | 1-134 | CARTR 3/8 HOT 1/4 TR | PART | 1 |
| 5 | 1-470 | SELF CLOSE CARTR 3/8 COLD 1/4 TR | PART | 1 |
| 6 | 92927 | HANDLE ADAPTER, SHORT | PART | 1 |
| 7 | 92490 | SCRW, M4 X 12 SKT FLT HD CAP SS | PART | 1 |
| 8 | 92926 | ADAPTER | PART | 1 |
| 9 | 13627 | COLLAR | PART | 1 |
| 10 | 91023 | O-RING, #2- 019, EPDM, 65-75 DURO, NSF 61 | PART | 1 |
| 11 | 50713 | SPOUT, WATER DISP. (TRAD.) | PART | 1 |
| 12 | 91382 | O-RING, #2- 012, TEFLON, | PART | 1 |
| 13 | 91017 | O-RING #2-012 | PART | 2 |
| 14 | 91383 | O-RING, #2- 014, TEFLON, NSF 61 | PART | 1 |
| 15 | 13800 | HANDLE HUB | PART | 2 |
| 16 | 92017 | SCRW, 1/4-20 X 3/16 SKT HD CUP PT SS | PART | 2 |
| 17 | 13801 | LEVER HANDLE | PART | 2 |
| 18 | 1-431 | RED SUPPLY LINE | ASSEMBLY | 1 |
| 19 | 1-432 | BLUE SUPPLY LINE | ASSEMBLY | 1 |
| 20 | 1-433 | GREY SUPPLY LINE | ASSEMBLY | 1 |
| 21 | 92016 | SCRW, 10-24 X 3/4 SKT HD FLT PT SS | PART | 1 |
| 22 | 13070 | RETAINER PLATE | PART | 1 |
| 23 | 13289 | NIPPLE | PART | 1 |
| 24 | 1-393 | 1-1/8 18 UNEF MOUNTING KIT | ASSEMBLY | 1 |
| 25 | 11733 | SHELL, SPOUT, WATER DISP | PART | 1 |
| 26 | 92194 | COUPLING, 3/8" X 1/4" | PART | 1 |
| 27 | 98043 | TAG LABEL, HOT WATER WARNING | PART | 1 |
| 28 | 92477 | SCRW, M4 X 16 SKT FLT HD SS | PART | 1 |

| | | | |
|-------------------|----------------------------------|-------------|---------|
| TESTING | - | - | - |
| ASSEMBLY | - | - | - |
| PLATING | - | - | - |
| POLISHING | - | NEXT ASSY | USED ON |
| MACHINING | - | APPLICATION | |
| TOOLING FIXTURE # | REMOVE ALL BURRS AND SHARP EDGES | | |

UNITS ARE: INCHES [MM]
TOLERANCES ARE:
FRACTIONS DECIMALS ANGLES
±1/16" .X ±.1 [2,5] ±°
.XX ±.06 [1,5]

(X.XXX) DENOTES CRITICAL DIMS.
ALL THREADS ARE CRITICAL

BRASSTECH 2001 CARNEGIE AVE.
INCORPORATED SANTA ANA, CA 92705
(949) 417-5207

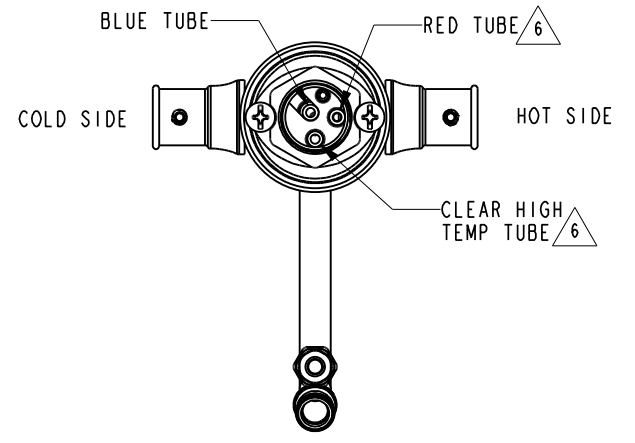
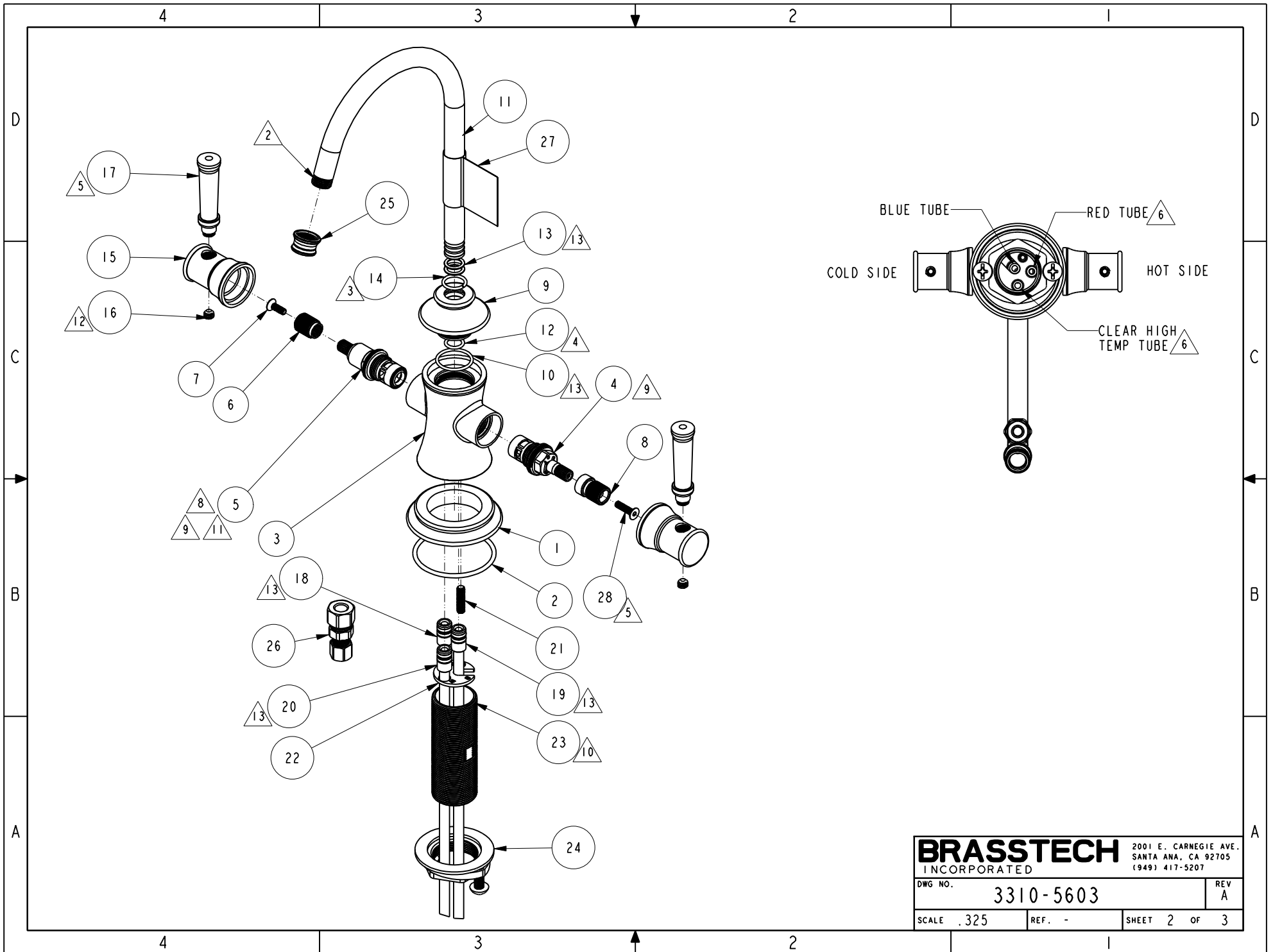
HOT & COLD WATER DISPENSER

DWG NO. 3310-5603 REV A

SCALE .450 REF. - SHEET 1 OF 3

| - | A | EN-4187 | 10/25/22 | J.M. |
|------|-----|-------------|----------|----------|
| - | - | EN-4290 | 12/06/20 | J.M. |
| ZONE | REV | DESCRIPTION | DATE | APPROVED |

COPYRIGHT 2005 BRASSTECH, INC.
THESE DRAWINGS AND THE DESIGNS
DEPICTED HEREIN ARE THE PROPRIETARY
PROPERTY OF BRASSTECH. ANY USE
OR REPRODUCTION IS SUBJECT TO
THE EXPRESS APPROVAL OF BRASSTECH.
UNAUTHORIZED USE IS STRICTLY
PROHIBITED. ALL RIGHTS RESERVED.



| | | |
|------------------|-----------|--|
| BRASSTECH | | 2001 E. CARNEGIE AVE. SANTA ANA, CA 92705 (949) 417-5207 |
| DWG NO. | 3310-5603 | REV A |
| SCALE .325 | REF. - | SHEET 2 OF 3 |

