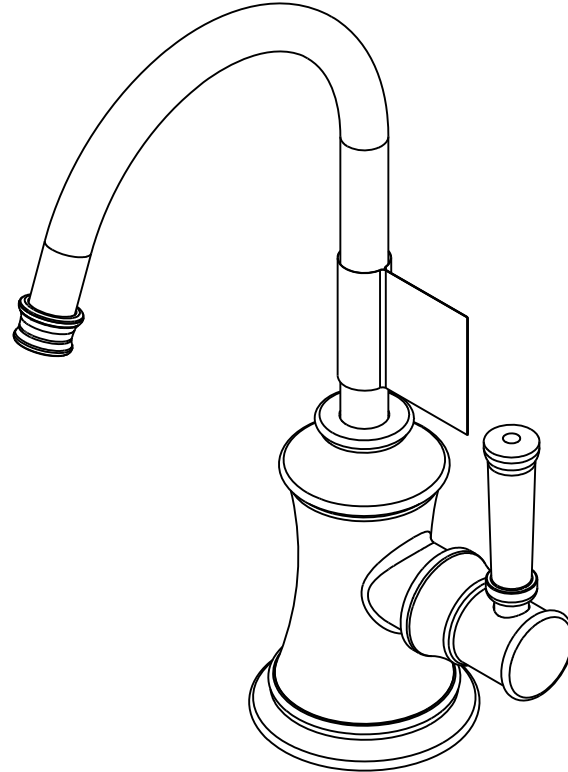


NOTES:

- (N1) 1. TO INSPECT ASSEMBLY, FOLLOW FIRST ARTICLE AND IN PROCESS INSPECTION SHEET.
- 2. APPLY LOCTITE 680.
- 3. SLIT AND SHORTEN O-RING BY .13" TO .20" IN LENGTH BEFORE INSTALLING.
- 4. SLIT O-RING BEFORE INSTALLING.
- 5. INSTALLATION TORQUE: 8 -14 LB-FT.
- (N6) 6. WATER TEST WHOLE UNIT.
- 7. BAG 5-007 IN A SEPARATE BAG.
- 8. APPLY THIN FILM OF DOW CORNING 111.
- 9. APPLY LOCTITE 242.
- 10. INSTALLATION TORQUE: 10-14 LB-IN.



BILL OF MATERIAL (CURRENT LEVEL)

ITEM	PT/ASSY	DESCRIPTION	TYPE	QTY.
1	13626	BASE RING	PART	1
2	91756	O-RING #2-134, EP, 50 DURO - GREY	PART	1
3	13631	COLD WATER DISPENSER BODY	PART	1
4	1-134	CARTR 3/8 HOT 1/4 TR	PART	1
5	92926	ADAPTER	PART	1
6	92477	SCRW, M4 X 16 SKT FLT HD SS	PART	1
7	13627	COLLAR	PART	1
8	91023	O-RING, #2- 019, EPDM, 65-75 DURO, NSF 61	PART	1
9	50713	SPOUT, WATER DISP. (TRAD.)	PART	1
10	91382	O-RING, #2- 012, TEFLON,	PART	1
11	91017	O-RING, #2- 012, EPDM, 65-75 DURO, NSF 61	PART	2
12	91383	O-RING, #2- 014, TEFLON, NSF 61	PART	1
13	13636	HANDLE HUB	PART	1
14	92192	SCRW, 10-32 X 5/8 SKT HD CUP PT SS	PART	1
15	13625	LEVER HANDLE	PART	1
16	11733	SHELL, SPOUT, WATER DISP	PART	1
17	98043	TAG LABEL, HOT WATER WARNING	PART	1
18	10661	MOUNTING STUD	PART	1
19	91063	MOUNTING CRESCENT GASKET	PART	1
20	10514	MOUNTING CRESCENT	PART	1
21	10516	MOUNTING NUT	PART	1
22	50760	NIPPLE WATER DISP	PART	1
23	5-007	1/4 COMP KIT	ASSEMBLY	1

J. ROMO  
04/0/2022

TESTING	-	-	-
ASSEMBLY	-	-	-
PLATING	-	-	-
POLISHING	-	NEXT ASSY	USED ON
MACHINING	-	APPLICATION	
TOOLING FIXTURE #		REMOVE ALL BURRS AND SHARP EDGES	

UNITS ARE: INCHES [MM]  
TOLERANCES ARE:  
FRACTIONS DECIMALS ANGLES  
±1/16" .X ±.1 [2.5] ±1°  
.XX ±.06 [1.5]

(X.XXX) DENOTES CRITICAL DIMS.  
ALL THREADS ARE CRITICAL

**BRASSTECH** 2001 CARNEGIE AVE.  
INCORPORATED SANTA ANA, CA 92705  
(949) 417-5207

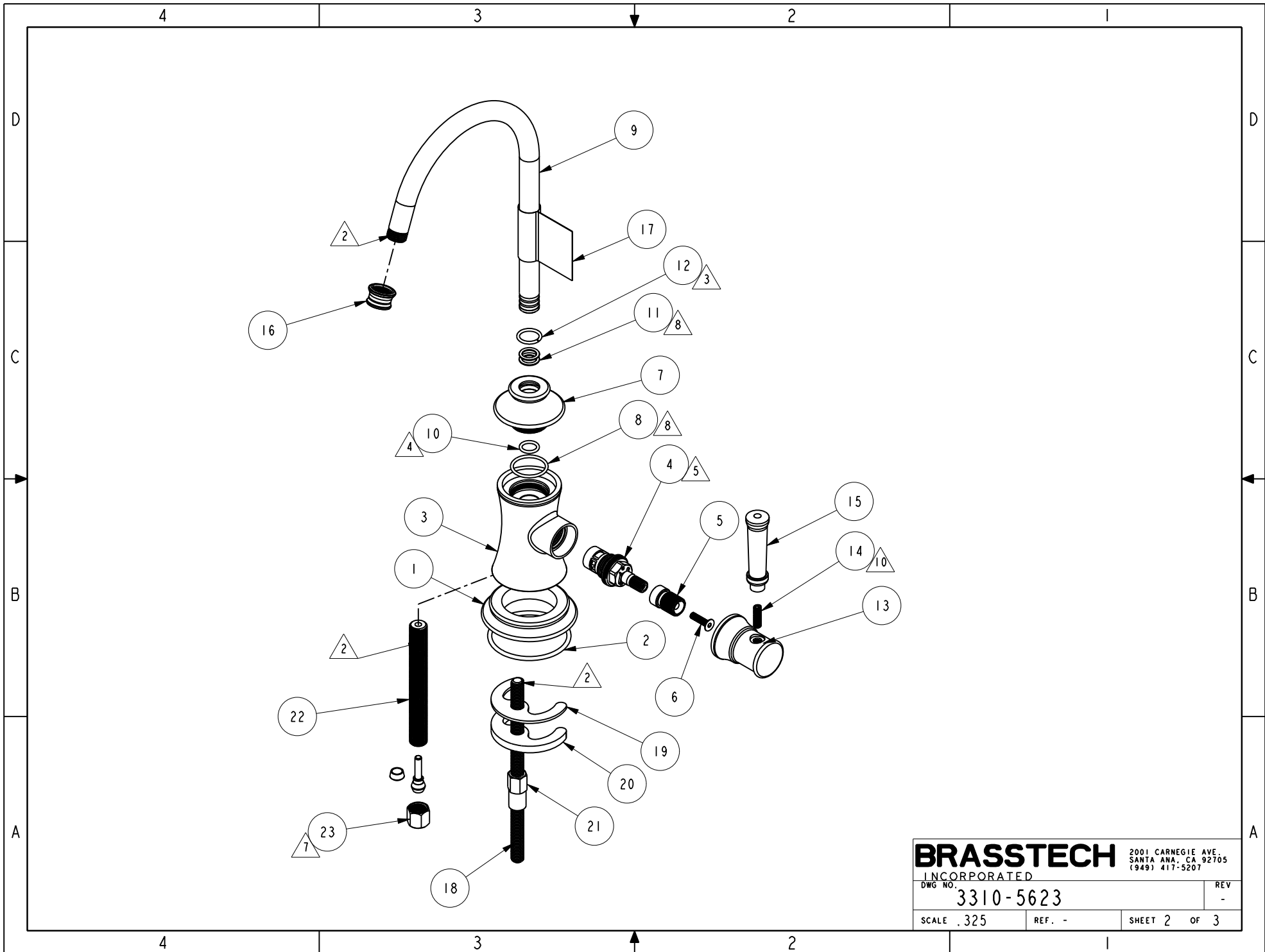
COLD WATER DISPENSER

DWG NO. 3310-5623

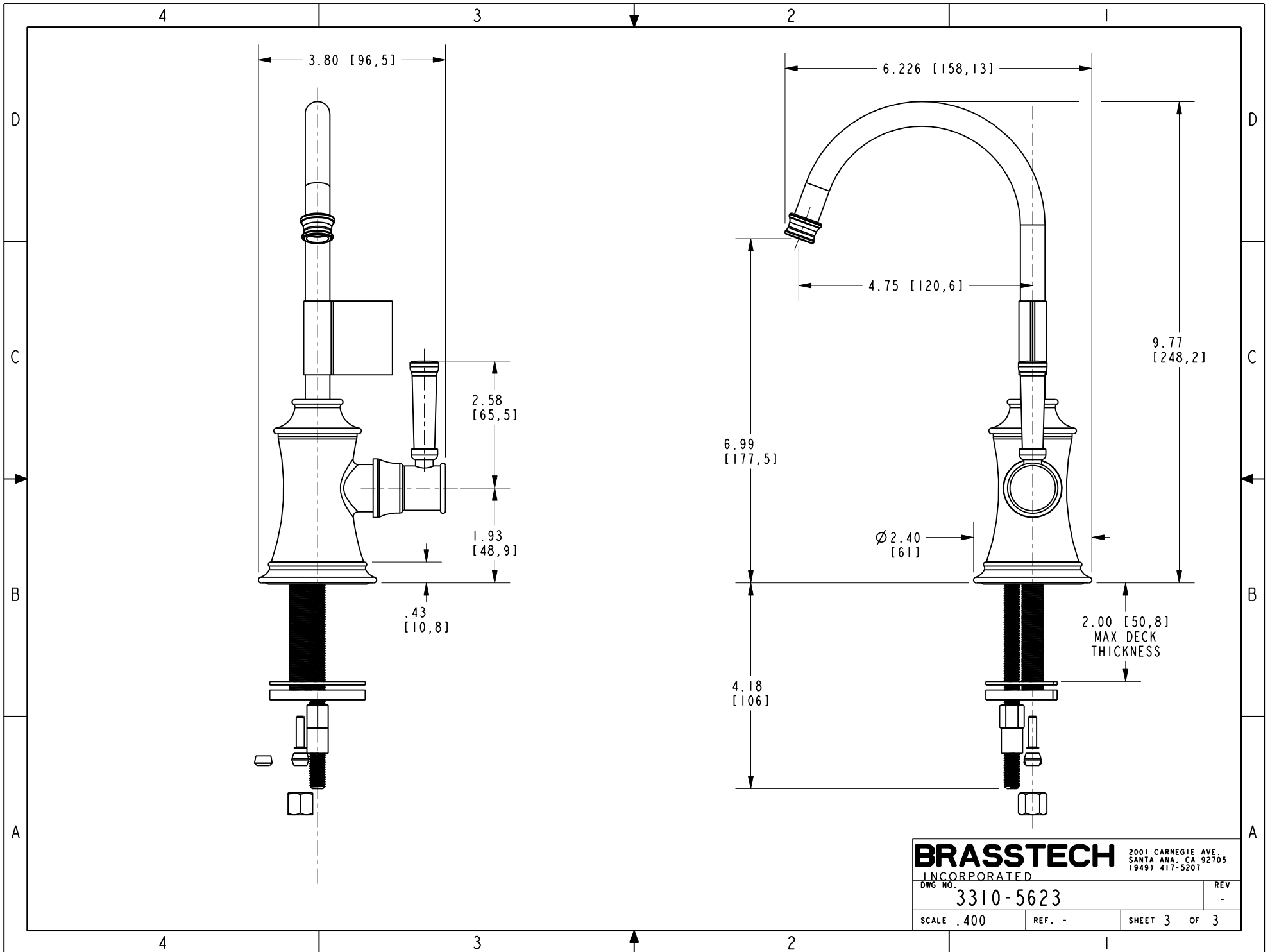
SCALE .500 REF. - SHEET 1 OF 3

COPYRIGHT 2005 BRASSTECH, INC.  
THESE DRAWINGS AND THE DESIGNS  
DEPICTED HEREIN ARE THE PROPRIETARY  
PROPERTY OF BRASSTECH. ANY USE  
OR REPRODUCTION IS SUBJECT TO  
THE EXPRESS APPROVAL OF BRASSTECH.  
UNAUTHORIZED USE IS STRICTLY  
PROHIBITED. ALL RIGHTS RESERVED.

ZONE	REV	DESCRIPTION	DATE	APPROVED
-	-	EN-4290	12/06/20	J.M.



<b>BRASSTECH</b>		2001 CARNEGIE AVE. SANTA ANA, CA 92705 (949) 417-5207	
INCORPORATED			
DWG NO.	3310-5623		REV
			-
SCALE .325	REF. -	SHEET 2 OF 3	



**BRASSTECH** 2001 CARNEGIE AVE.  
 INCORPORATED SANTA ANA, CA 92705  
 (949) 417-5207

DWG NO.	3310-5623	REV	-
SCALE	.400	REF.	-
SHEET 3		OF 3	