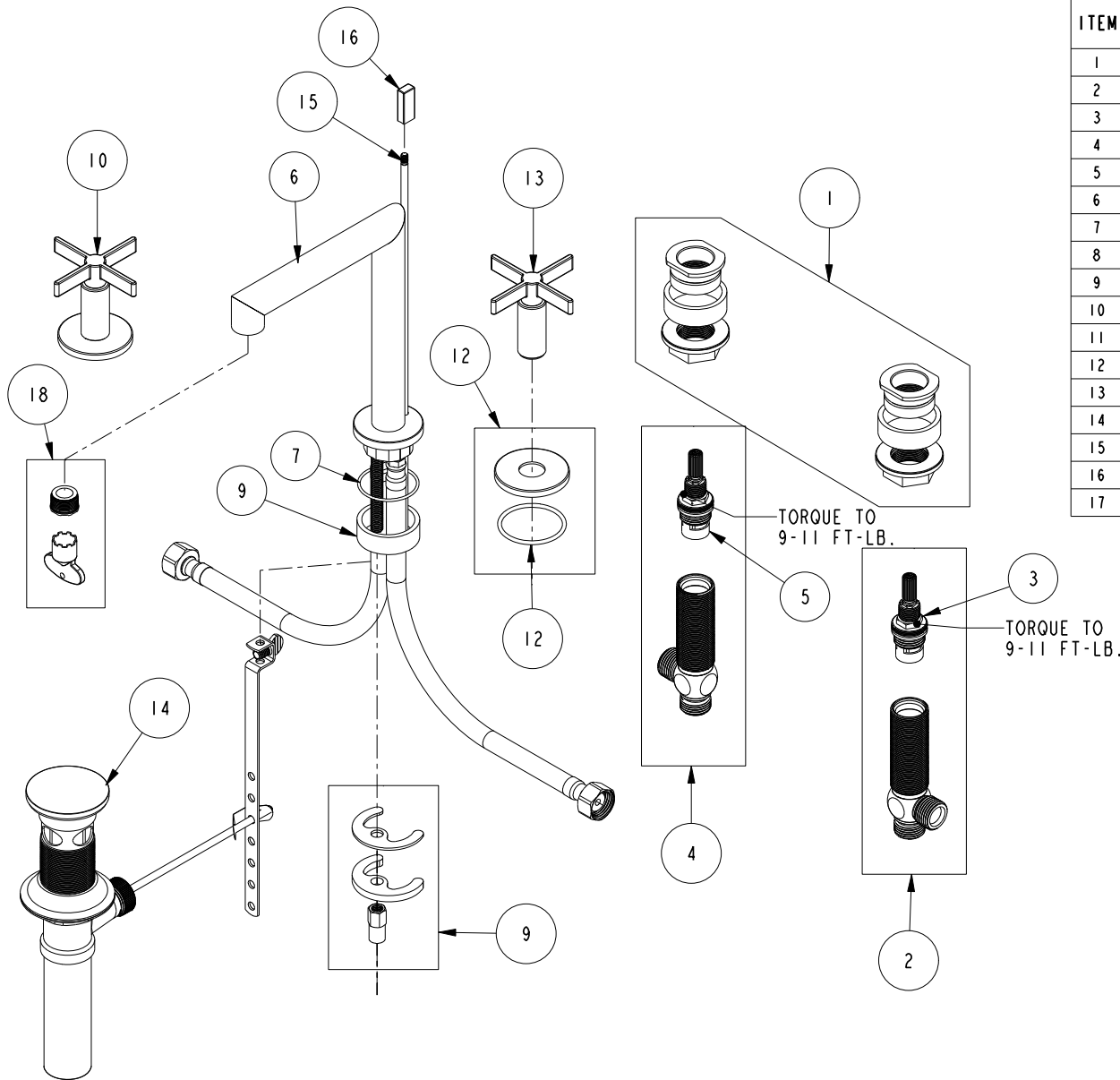


REPLACEMENT PARTS



ITEM	PT/ASSY	SPECIFY FINISH	DESCRIPTION
1	1-226		WIDESPREAD MOUNTING HARDWARE
2	1-527		W/S CART/BODY ASM (HOT)
3	1-002		W/S CARTRIDGE - HOT
4	1-526		W/S CART/BODY ASM (COLD)
5	1-001		W/S CARTRIDGE - COLD
6	3-402	YES	W/S - MITER SPOUT ASM
7	91766		O-RING, #2-029, 50 DURO
8	1-491		SPOUT MOUNTING KIT
9	10382		QUICK CONNECT SPACER
10	3-722	YES	CROSS HANDLE W/ESC.
11	20-565	YES	ESCUTCHEON ASM
12	91768		O-RING, #2-130, EP, 50 DURO - GREY
13	20-567	YES	CROSS HANDLE ASM
14	325	YES	POP UP ASSEMBLY
15	10288	YES	3/16" POP UP ROD
16	11738	YES	POP UP KNOB
17	1-492		AERATOR 1.2 GPM WITH KEY

W/S LAV FAUCET
3390

REV B EN-4734 11/09/23 APPROVED RS

NEWPORT BRASS.

t: 949.417.5207 | www.newportbrass.com