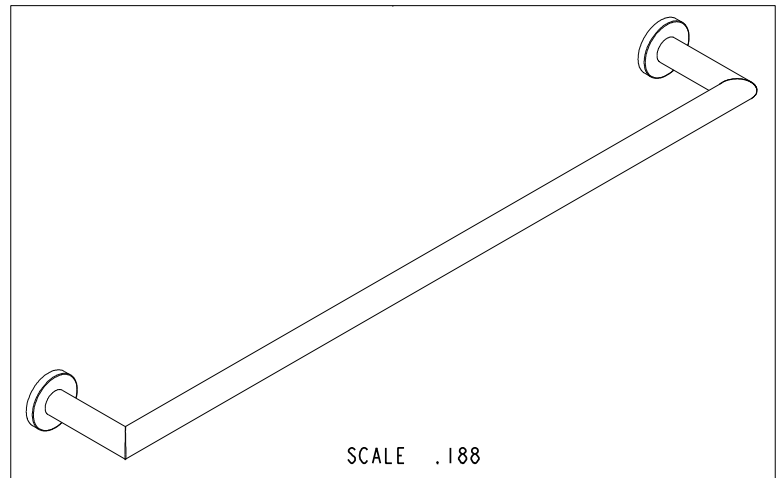
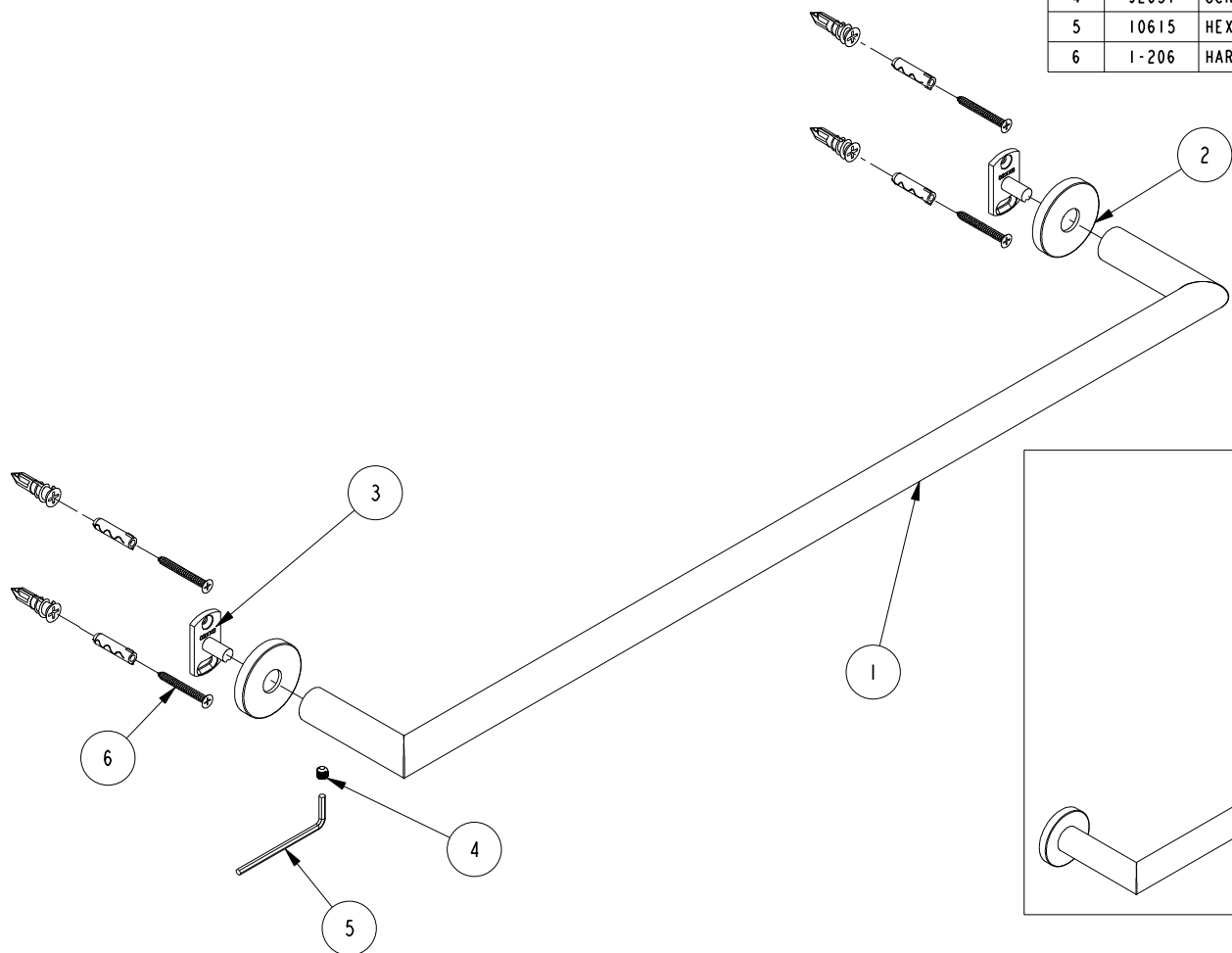


NOTES:

(N1) 1. FIT / FORM / FUNCTION SHALL FOLLOW PS-E.008.

BILL OF MATERIAL (CURRENT LEVEL)

ITEM	PT/ASSY	DESCRIPTION	TYPE	QTY.
1	7-658	24 "TOWEL BAR	ASSEMBLY	1
2	40458	ROSETTE	PART	2
3	02XXG	MOUNTING BRACKET	PART	2
4	92031	SCRW, M6 X 1 X 6 SKT HD CUP PT W/ SELF LOC SS	PART	2
5	10615	HEX KEY, 3MM ALLOY STEEL	PART	1
6	1-206	HARDWARE PACK	ASSEMBLY	2



SCALE .188

ZONE	REV	DESCRIPTION	DATE	APPROVED
-	C	EN-4150	03/31/20	R. S.
-	B	EN-4032	12/05/19	R. S.
-	A	EN-1893	11/14/11	J. M.
-	-	EN-0995-1	11/10/10	J. M.

COPYRIGHT 2005 BRASSTECH, INC. THESE DRAWINGS AND THE DESIGNS DEPICTED HEREIN ARE THE PROPRIETARY PROPERTY OF BRASSTECH. ANY USE OR REPRODUCTION IS SUBJECT TO THE EXPRESS APPROVAL OF BRASSTECH. UNAUTHORIZED USE IS STRICTLY PROHIBITED. ALL RIGHTS RESERVED.

TESTING	-	-	-
ASSEMBLY	-	-	-
PLATING	-	-	-
POLISHING	-	NEXT ASSY	USED ON
MACHINING	-	APPLICATION	
TOOLING FIXTURE #	REMOVE ALL BURRS AND SHARP EDGES		

UNITS ARE: INCHES [MM]
TOLERANCES ARE:
FRACTIONS DECIMALS ANGLES
±1/16" .X ±.1 [2.5] ±1°
.XX ±.06 [1.5]

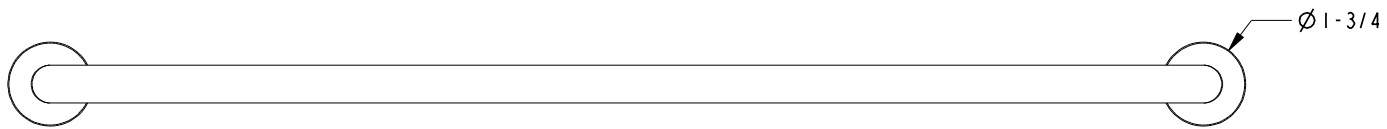
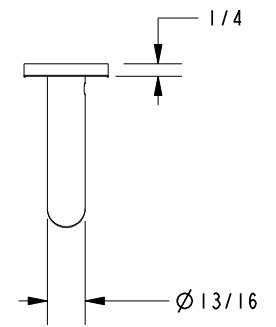
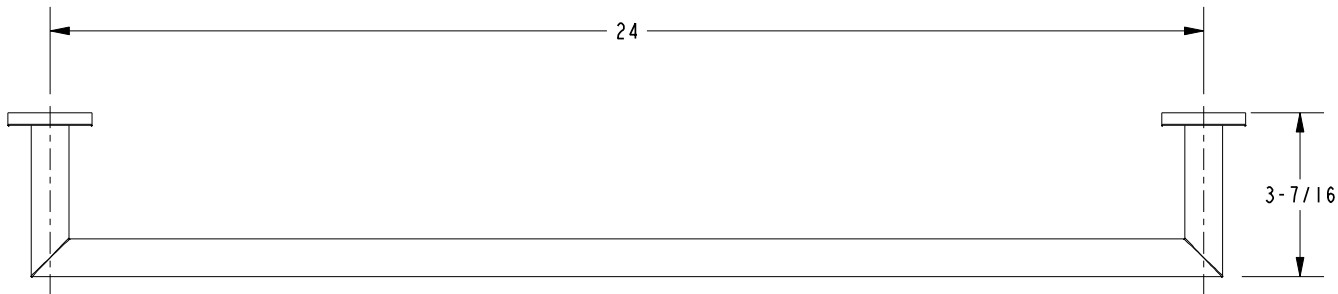
(X.XXX) DENOTES CRITICAL DIMS. ALL THREADS ARE CRITICAL

DRAWN	R.S.	11/10/10
CHECKED	J.M.	11/10/10
APPROVED	J.M.	11/10/10

BRASSTECH 2001 CARNEGIE AVE. SANTA ANA, CA 92705 (949) 417-5207
INCORPORATED

SINGLE TOWEL BAR - 24"

DWG NO.	36-02	REV	C
SCALE	.250	REF.	-
SHEET	1	OF	2



BRASSTECH		2001 E. CARNEGIE AVE. SANTA ANA, CA 92705 (949) 417-5207	
DWG NO.	36-02	REV	C
SCALE	.250	REF.	-
		SHEET	2 OF 2