

4

3

2

1

NOTES:

- (N1) 1. FIT / FORM / FUNCTION SHALL FOLLOW PS-E.008.
- 2 APPLY LOCTITE 680 TO THREADS
- 3 APPLY THIN COAT OF SILICONE GREASE TO O-RINGS
- 4. UPON ASSEMBLY 7-736 ARM TO SUSTAIN ITS OWN WEIGHT WHEN ROTATED

BILL OF MATERIAL (CURRENT LEVEL)

ITEM	PT/ASSY	DESCRIPTION	TYPE	QTY.
1	40458	ROSETTE	PART	2
2	02XXG	MOUNTING BRACKET	PART	2
3	1-206	HARDWARE PACK	ASSEMBLY	2
4	40688	PIVOTING TISSUE POST RIGHT	PART	1
5	40689	PIVOTING TISSUE POST LEFT	PART	1
6	91464	WSHR, .254 ID X .625 OD X .063 THK, FLT, ACETAL	PART	1
7	7-736	PIVOTING TISSUE ARM	PART	1
8	91254	POLY BUMPER PAD, DIA .250" X .062"	PART	1
9	92893	PIVOT SCREW	PART	1
10	91098	O-RING, #2-007, EPDM, 65-75 DURO	PART	2
11	92461	SCRW, M6 X 1 X 6 SKT HD CONE PT SS	PART	2
12	10615	HEX KEY, 3MM ALLOY STEEL	PART	1

D

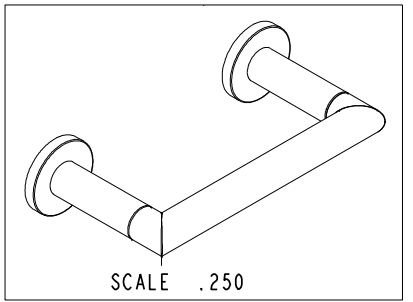
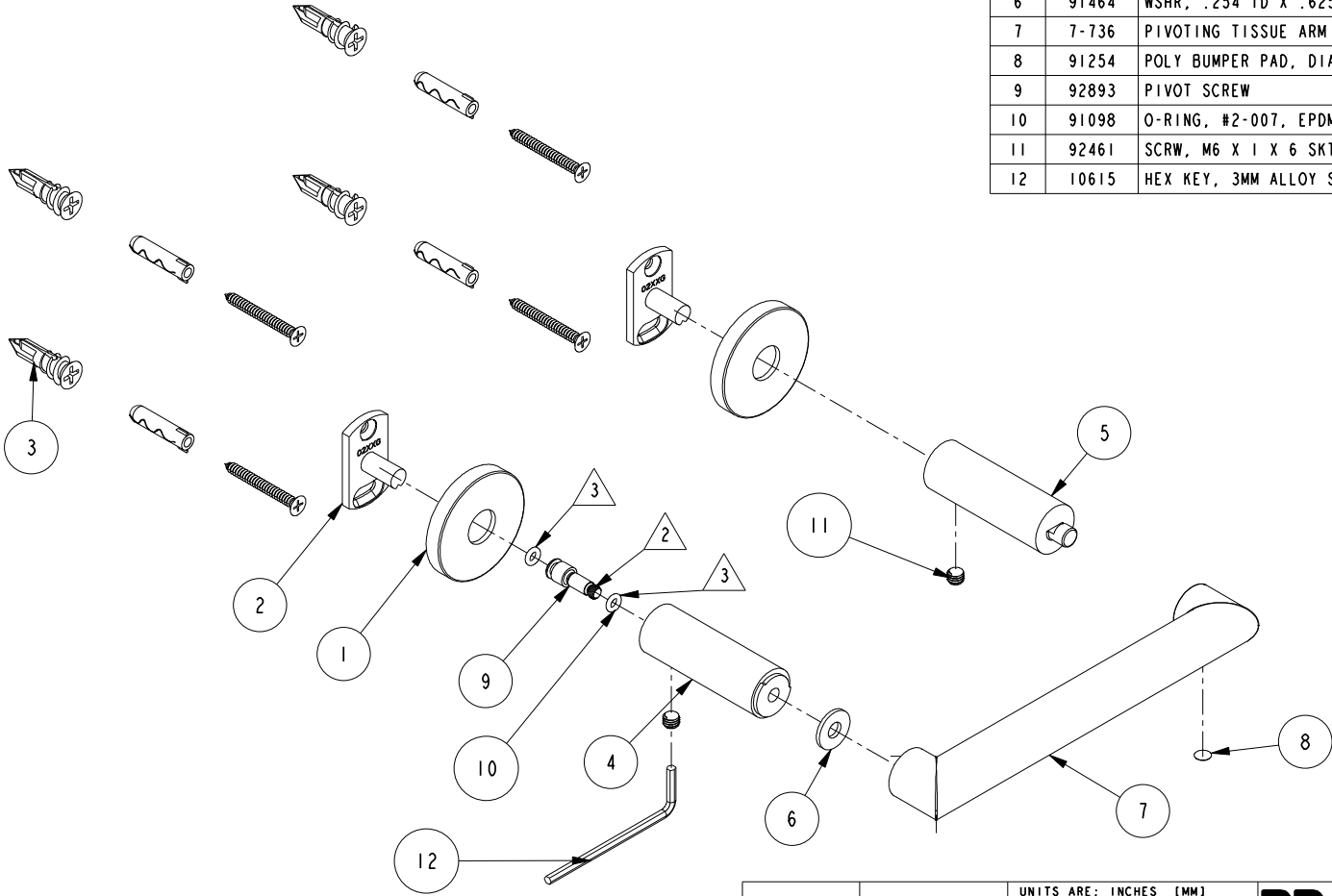
D

C

C

B

B



A

A

ZONE	REV	DESCRIPTION	DATE	APPROVED
-	D	EN-4143	03/20/20	J.M.
-	C	EN-3735	06/04/19	J.M.
-	B	EN-2789	08/04/19	-
-	A	EN-1893	11/14/11	-
-	-	EN-0995-1	11/10/10	-

COPYRIGHT 2005 BRASSTECH, INC. THESE DRAWINGS AND THE DESIGNS DEPICTED HEREIN ARE THE PROPRIETARY PROPERTY OF BRASSTECH. ANY USE OR REPRODUCTION IS SUBJECT TO THE EXPRESS APPROVAL OF BRASSTECH. UNAUTHORIZED USE IS STRICTLY PROHIBITED. ALL RIGHTS RESERVED.

TESTING	ASSEMBLY	PLATING	POLISHING	MACHINING	TOOLING FIXTURE #	APPLICATION
-	-	-	-	-	-	REMOVE ALL BURRS AND SHARP EDGES
-	-	-	-	-	-	USED ON
-	-	-	-	-	-	APPROVED

UNITS ARE: INCHES [MM]	
TOLERANCES ARE:	
FRACTIONS	DECIMALS
±1/16"	.X ±.1 [2.5]
	.XX ±.06 [1.5]
ANGLES ±1°	
(X.XXX) DENOTES CRITICAL DIMS. ALL THREADS ARE CRITICAL	
DRAWN	-
CHECKED	-
APPROVED	-

BRASSTECH 2001 CARNEGIE AVE. SANTA ANA, CA 92705 (949) 417-5207

INCORPORATED

PIVOTING TISSUE HOLDER

DWG NO. 36-28 REV D

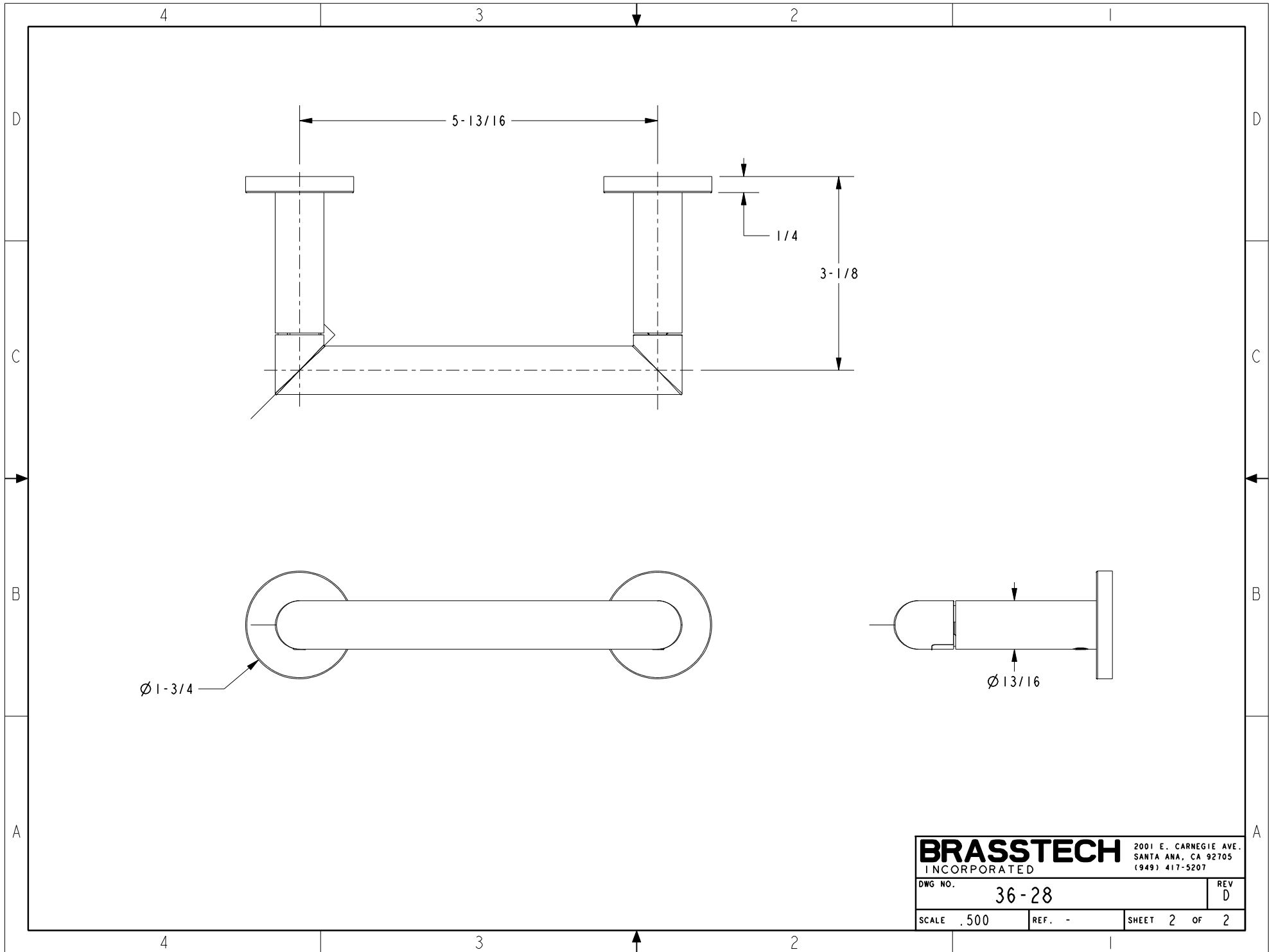
SCALE .375 REF. - SHEET 1 OF 2

4

3

2

1



BRASSTECH		2001 E. CARNEGIE AVE. SANTA ANA, CA 92705 (949) 417-5207	
DWG NO.	36-28	REV	D
SCALE	.500	REF.	-
		SHEET	2 OF 2