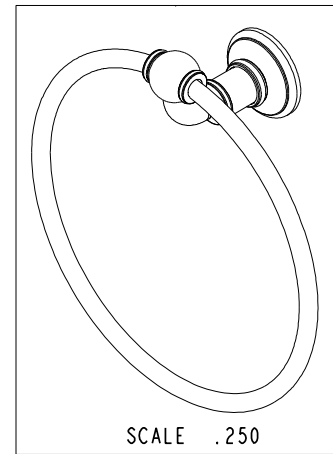
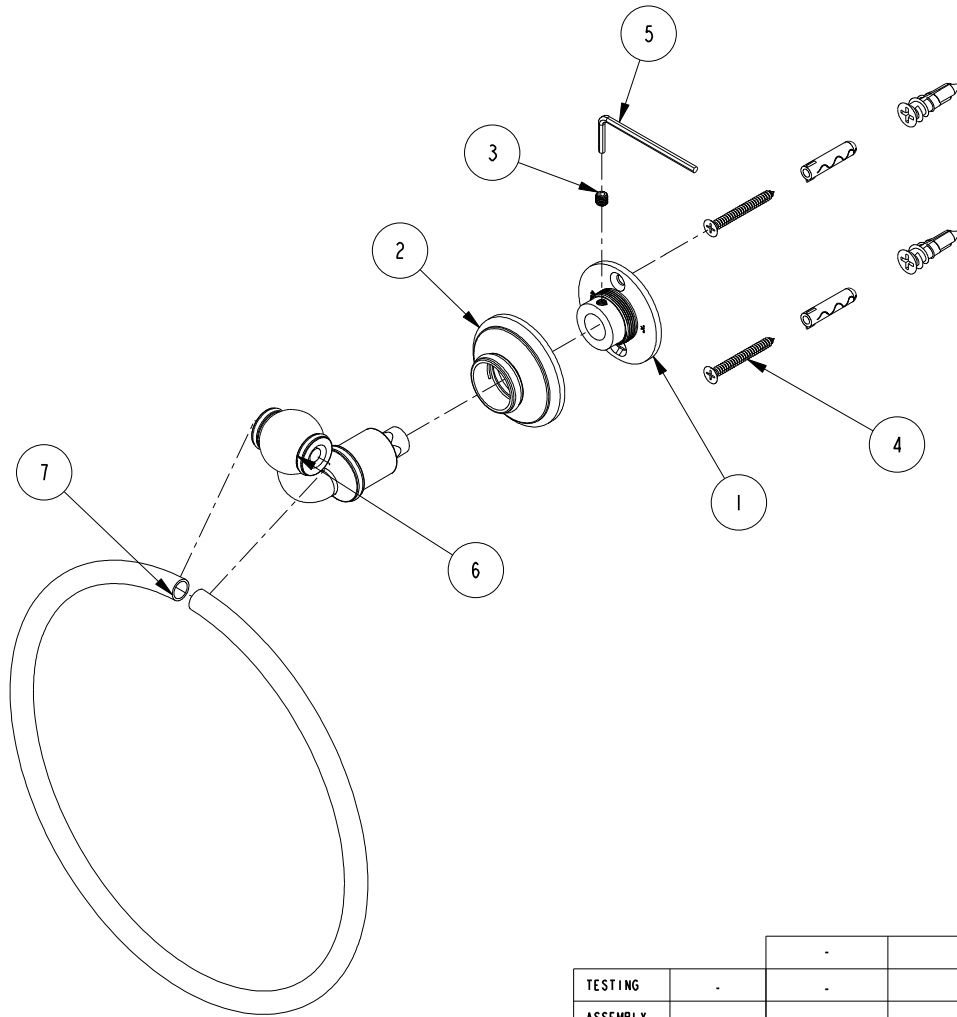


NOTES:

(NI) 1. FIT / FORM / FUNCTION SHALL FOLLOW PS-E.008.

BILL OF MATERIAL (CURRENT LEVEL)

ITEM	PT/ASSY	DESCRIPTION	TYPE	QTY.
1	45XX	MOUNTING FLANGE	PART	1
2	40460	ROSETTE	PART	1
3	92308	SCRW, M5 X 5 SKT HD CUP PT W/ SELF LOC SS	PART	1
4	1-206	HARDWARE PACK	ASSEMBLY	1
5	10888	HEX KEY, 2.5MM ALLOY STEEL	PART	1
6	7-704	TOWEL RING - POST ASSEMBLY	ASSEMBLY	1
7	40469	8" TOWEL RING	PART	1



TESTING	-	-	-
ASSEMBLY	-	-	-
PLATING	-	-	-
POLISHING	-	NEXT ASSY	USED ON
MACHINING	-	APPLICATION	
TOOLING FIXTURE #	REMOVE ALL BURRS AND SHARP EDGES		

UNITS ARE: INCHES [MM]			
TOLERANCES ARE:			
FRACTIONS	DECIMALS	ANGLES	
±1/16"	.X ±.1 [2.5]	±1°	
	.XX ±.06 [1.5]		
(X.XXX) DENOTES CRITICAL DIMS.			
ALL THREADS ARE CRITICAL			
DRAWN	R.S.	12/09/11	
CHECKED	R.S.	12/09/11	
APPROVED	R.S.	12/09/11	

BRASSTECH 2001 CARNEGIE AVE.
INCORPORATED SANTA ANA, CA 92705
(949) 417-5207

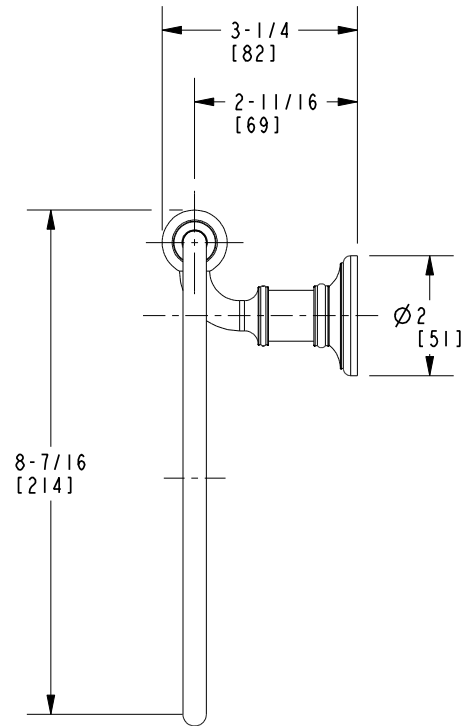
8" TOWEL RING

DWG NO.	38-09	REV	A
SCALE	.313	REF.	-
SHEET	1	OF	2

ZONE	REV	DESCRIPTION	DATE	APPROVED
-	A	EN-4032	12/04/19	R.S.
-	-	EN-1916	12/09/11	R.S.

COPYRIGHT 2005 BRASSTECH, INC.
THESE DRAWINGS AND THE DESIGNS
DEPICTED HEREIN ARE THE PROPRIETARY
PROPERTY OF BRASSTECH. ANY USE
OR REPRODUCTION IS SUBJECT TO
THE EXPRESS APPROVAL OF BRASSTECH.
UNAUTHORIZED USE IS STRICTLY
PROHIBITED. ALL RIGHTS RESERVED.

$\varnothing 8-3/16$
[208]



BRASSTECH 2001 E. CARNEGIE AVE.
INCORPORATED SANTA ANA, CA 92705
(949) 417-5207

DWG NO.	38-09	REV	A
SCALE	.313	REF.	-
SHEET 2		OF 2	