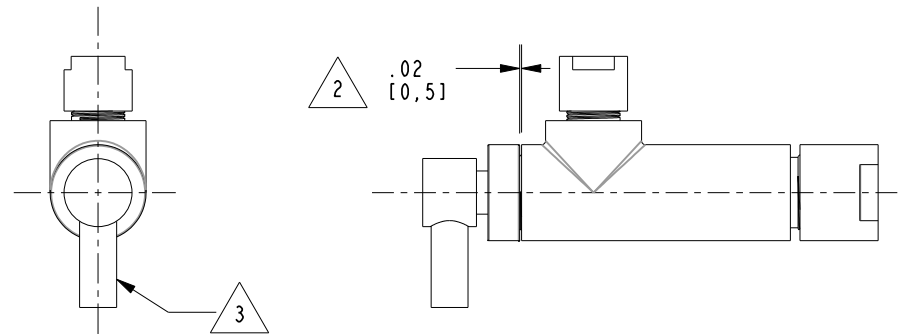
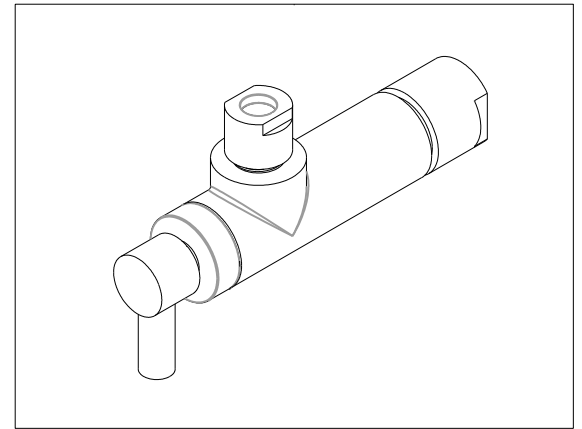
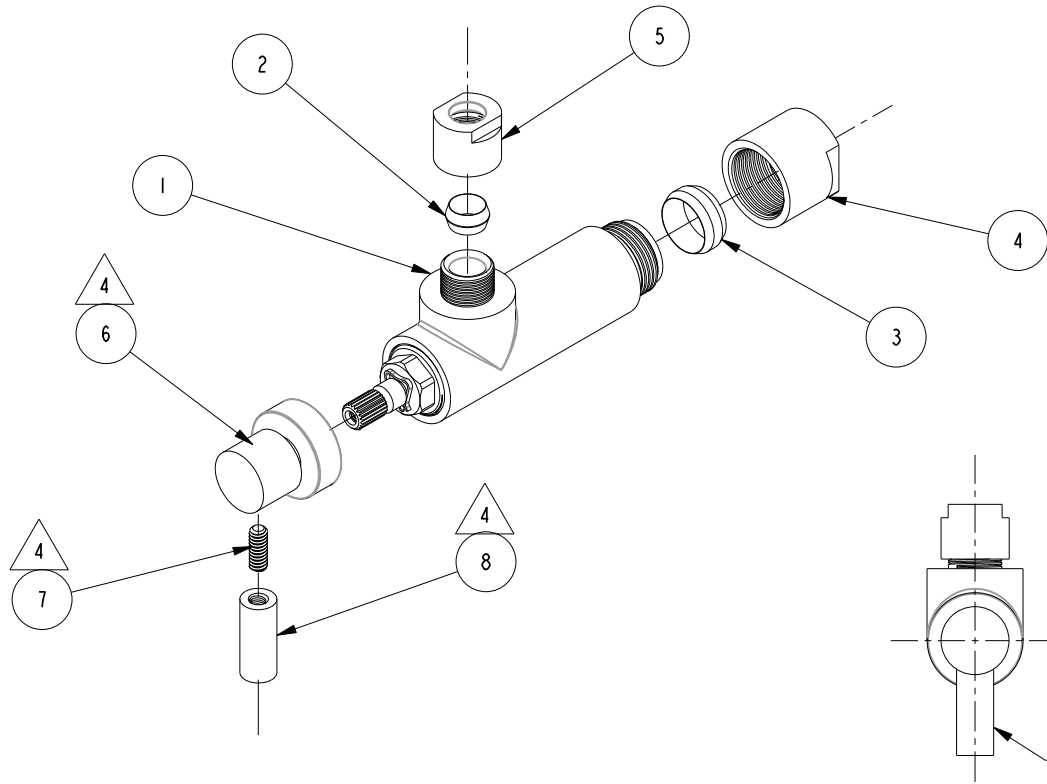


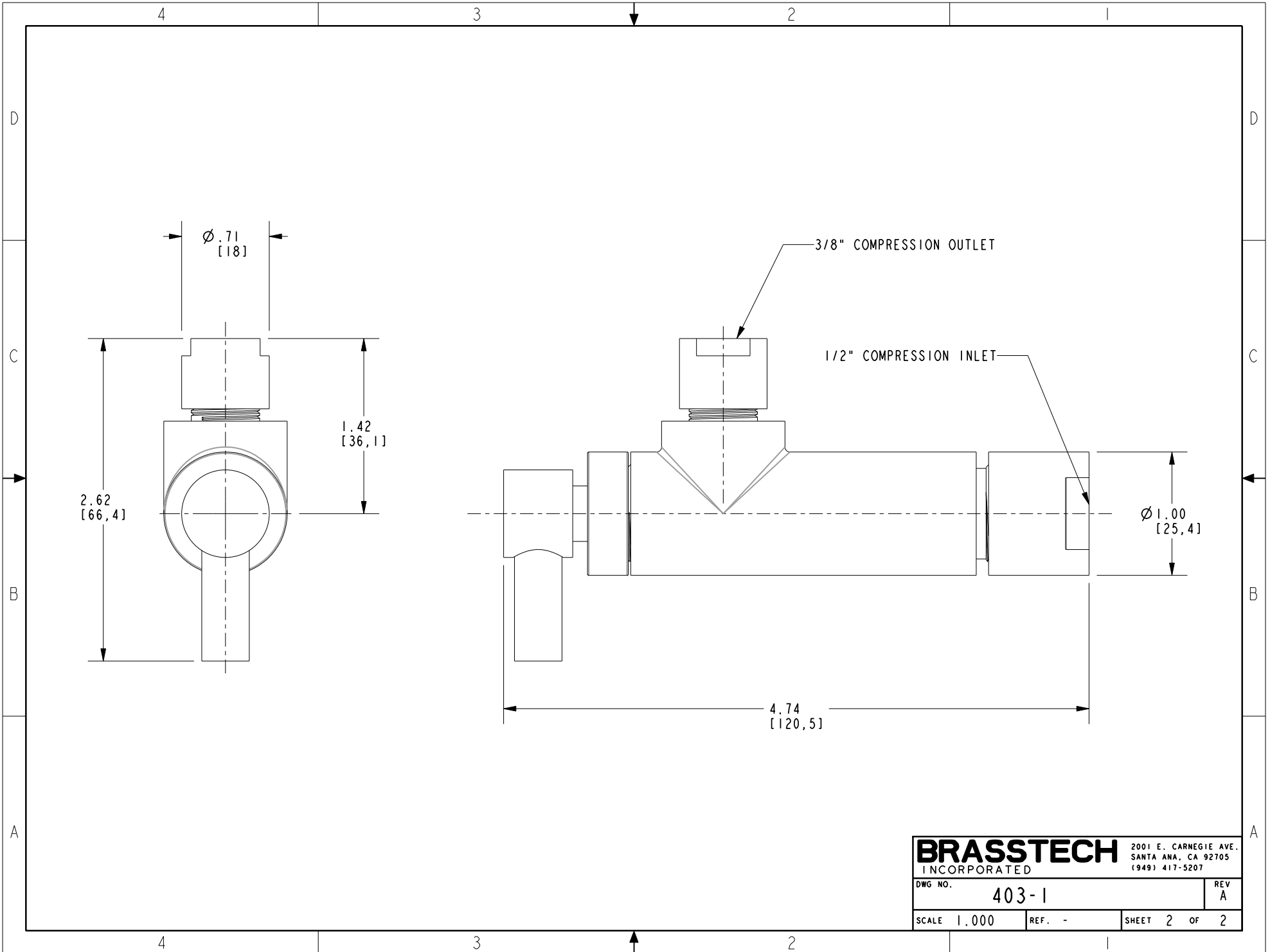
NOTES:

- (N1) 1. FIT / FORM / FUNCTION SHALL FOLLOW PS-E.008.
- 2 CLEARANCE GAP AFTER INSTALLATION.
- 3 HANDLE ORIENTATION WHEN VALVE OPENED.
- 4 USE ITEM 8 TO SECURE ITEM 6 TO CARTRIDGE STEM FIRST. THEN APPLY LOCTITE 680 BETWEEN ITEM 8 AND ITEM 7 BEFORE INSTALLING THEM TOGETHER.

BILL OF MATERIAL (CURRENT LEVEL)				
ITEM	PT/ASSY	DESCRIPTION	TYPE	QTY.
1	6-034	BODY ASSY, ANGLE, ROUND	ASSEMBLY	1
2	50359	COMPRESSION RING	PART	1
3	50362	COMPRESSION RING	PART	1
4	50741	NUT, 13/16-18 UNS-2B THREAD	PART	1
5	50742	NUT, 9/16-24 UNEF-2B THREAD	PART	1
6	50738	LEVER HANDLE HUB	PART	1
7	92087	SCRW, 10-24 X 1/2 SKT HD CUP PT SS	PART	1
8	50733	SPOKE	PART	1



TESTING - - - ASSEMBLY - - - PLATING - - - POLISHING - - - MACHINING - - - TOOLING FIXTURE # - - -					- - - - - - - - - - - - - - - - - -					UNITS ARE: INCHES [MM] TOLERANCES ARE: FRACTIONS DECIMALS ANGLES $\pm 1/16"$ .x $\pm .1$ [2,5] $\pm 1^\circ$ .xx $\pm .06$ [1,5] (X.XXX) DENOTES CRITICAL DIMS. ALL THREADS ARE CRITICAL					<b>BRASSTECH</b> 2001 CARNEGIE AVE. INCORPORATED SANTA ANA, CA 92705 (949) 417-5207				
- A EN-430011 10/25/21 N.S. - - EO-0392 07/20/04 - ZONE REV DESCRIPTION DATE APPROVED					COPYRIGHT 2005 BRASSTECH, INC. THESE DRAWINGS AND THE DESIGNS DEPICTED HEREIN ARE THE PROPRIETARY PROPERTY OF BRASSTECH. ANY USE OR REPRODUCTION IS SUBJECT TO THE EXPRESS APPROVAL OF BRASSTECH. UNAUTHORIZED USE IS STRICTLY PROHIBITED. ALL RIGHTS RESERVED.					DRAWN HNS 10/25/21 CHECKED W. SANTOS 10/25/21 APPROVED W. SANTOS 10/25/21 DWG NO. 403-1 SCALE .500 REF. - SHEET 1 OF 2									
APPLICATION REMOVE ALL BURRS AND SHARP EDGES					NEXT ASSY USED ON					ANGLE VALVE, LEVER HANDLE, ROUND									



<b>BRASSTECH</b>		2001 E. CARNEGIE AVE.	
INCORPORATED		SANTA ANA, CA 92705	
		(949) 417-5207	
DWG NO.	403-1	REV	A
SCALE	1.000	REF.	-
		SHEET	2 OF 2