

4

3

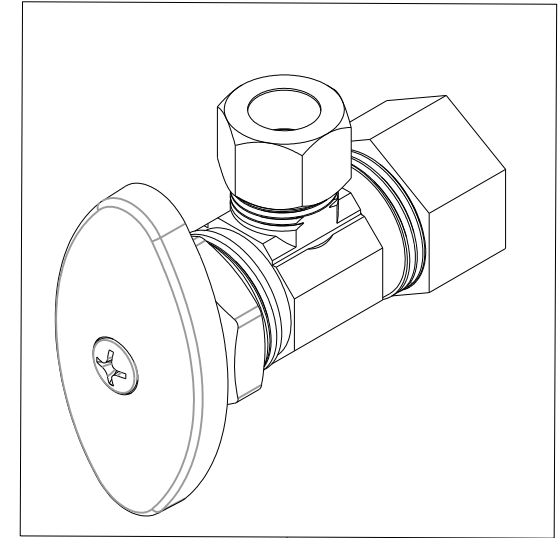
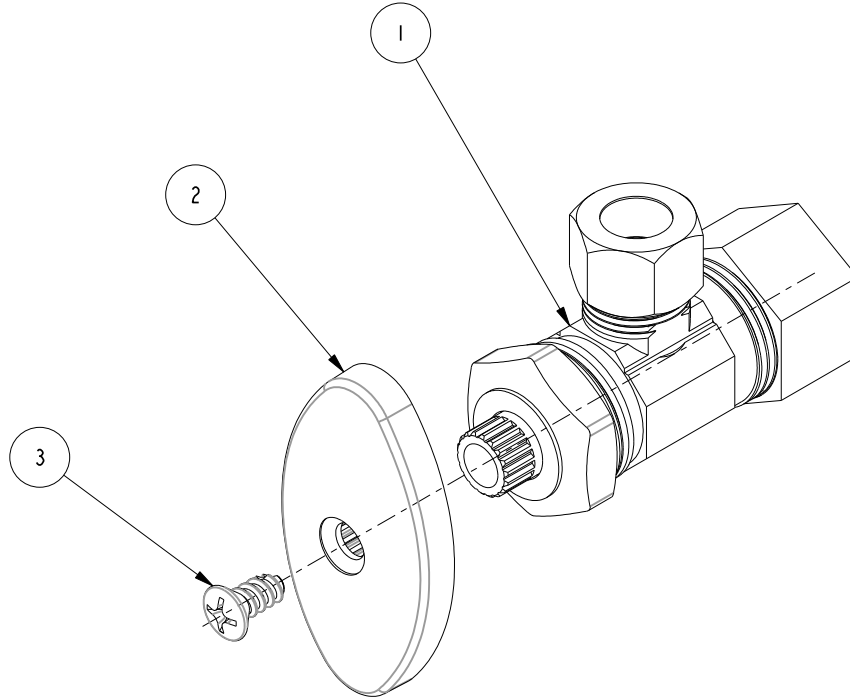
2

NOTES:

(NI) 1. TO INSPECT ASSEMBLY, FOLLOW FIRST ARTICLE AND IN PROCESS INSPECTION SHEET.

BILL OF MATERIAL (CURRENT LEVEL)

ITEM	PT/ASSY	DESCRIPTION	TYPE	QTY.
1	6-403	A.V. 1/2" CU X 3/8" CMP	ASSEMBLY	1
2	50355	HANDLE	PART	1
3	92073	SCREW #0 X 3/8" PHIL OVAL HD BRASS	PART	1



TESTING	-	-	-
ASSEMBLY	-	-	-
PLATING	-	-	-
POLISHING	-	NEXT ASSY	USED ON
MACHINING	-	APPLICATION	
TOOLING FIXTURE #		REMOVE ALL BURRS AND SHARP EDGES	

UNITS ARE: INCHES [MM]
 TOLERANCES ARE:
 FRACTIONS DECIMALS ANGLES
 $\pm 1/16"$ $.X \pm .1 [2.5]$ $\pm 1"$
 $.XX \pm .06 [1.5]$
 (X.XXX) DENOTES CRITICAL DIMS.
 ALL THREADS ARE CRITICAL

BRASSTECH 2001 CARNEGIE AVE.
 INCORPORATED SANTA ANA, CA 92705
 (949) 417-5207

1/2" COMP. X 3/8" SUPPLY VALVE

ZONE	REV	DESCRIPTION	DATE	APPROVED
-	B	EN-430011	10/25/21	N.S.
-	A	EN-2537	05/17/13	R.S.
-	-	EN-1699	02/03/11	R.S.

COPYRIGHT 2005 BRASSTECH, INC.
 THESE DRAWINGS AND THE DESIGNS
 DEPICTED HEREIN ARE THE PROPRIETARY
 PROPERTY OF BRASSTECH. ANY USE
 OR REPRODUCTION IS SUBJECT TO
 THE EXPRESS APPROVAL OF BRASSTECH.
 UNAUTHORIZED USE IS STRICTLY
 PROHIBITED. ALL RIGHTS RESERVED.

DRAWN	HMS	10/25/21
CHECKED	W. SANTOS	10/25/21
APPROVED	W. SANTOS	10/25/21

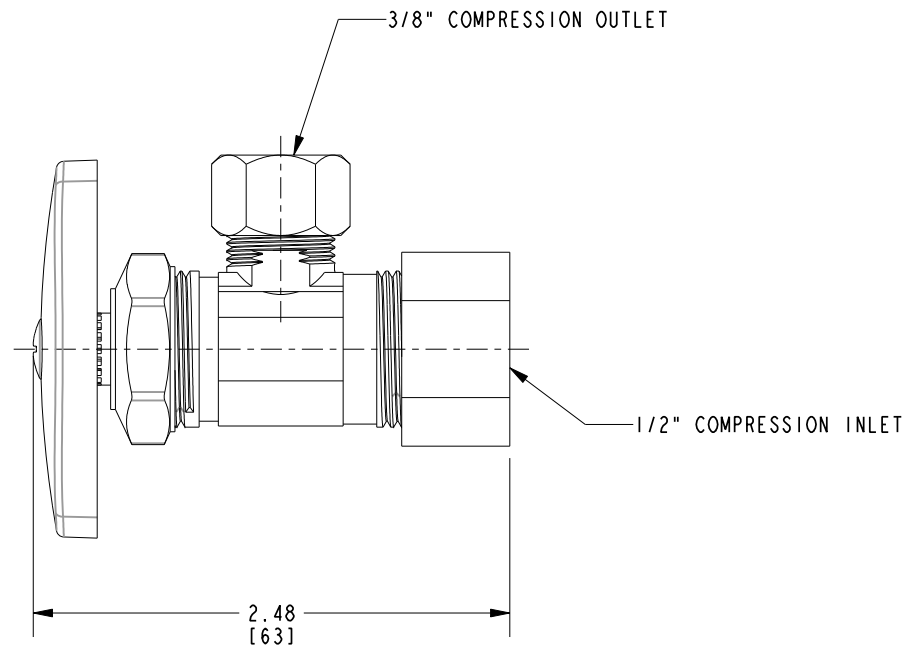
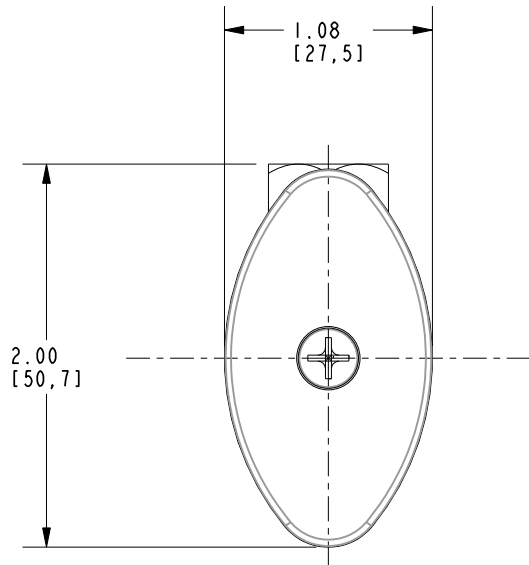
DWG NO.	403	REV	B
SCALE	1.000	REF.	-
SHEET	1	OF	2

4

3

2

1



BRASSTECH		2001 E. CARNEGIE AVE.	
INCORPORATED		SANTA ANA, CA 92705	
		(949) 417-5207	
DWG NO.	403	REV	B
SCALE 1.000	REF. -	SHEET 2	OF 2