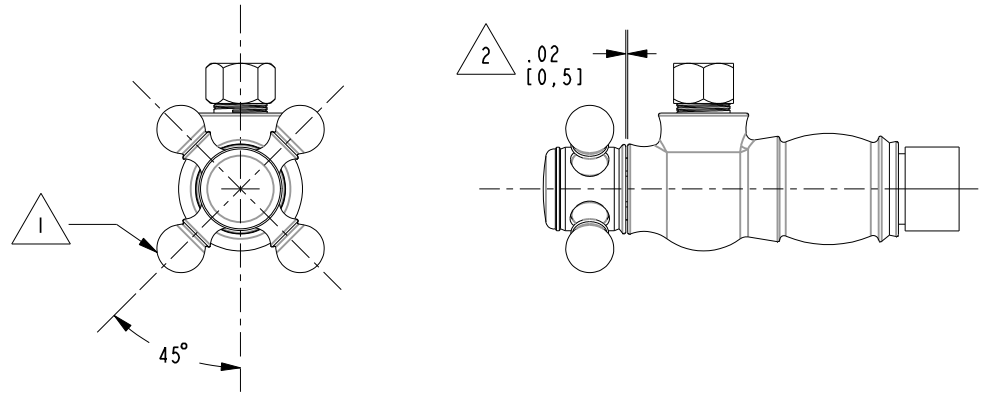
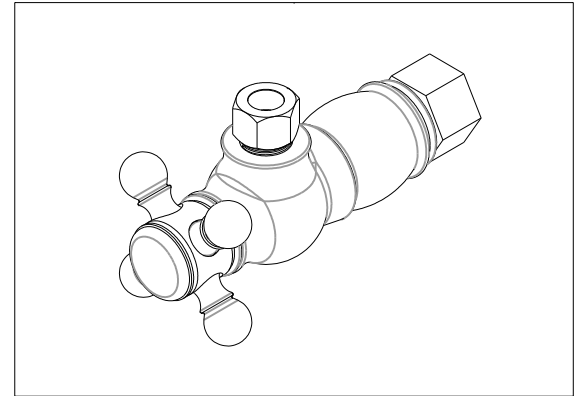
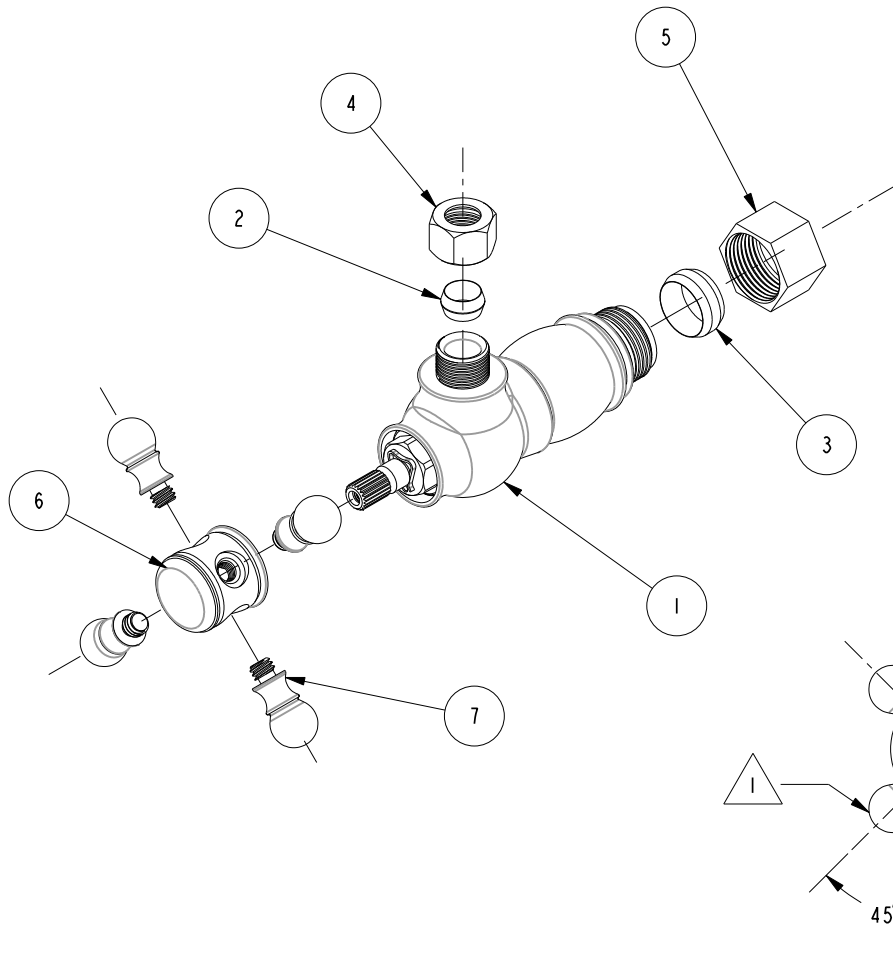


NOTES:

- (NI) 1. FIT / FORM / FUNCTION SHALL FOLLOW PS-E.008.
- 2 CLEARANCE GAP AFTER INSTALLATION.
- 3 HANDLE ORIENTATION WHEN VALVE IS OPENED.

BILL OF MATERIAL (CURRENT LEVEL)				
ITEM	PT/ASSY	DESCRIPTION	TYPE	QTY.
1	6-030	BODY ASSY, ANGLE, TRADITIONAL	ASSEMBLY	1
2	50359	COMPRESSION RING	PART	1
3	50362	COMPRESSION RING	PART	1
4	50677	COMP NUT 3/8" TUBING	PART	1
5	50678	COMP NUT 1/2" Cu PIPE	PART	1
6	50736	CENTER HUB, CROSS TRADITIONAL	PART	1
7	10851	HANDLE FINIAL	PART	4



ZONE	REV	DESCRIPTION	DATE	APPROVED
-	A	EN-430011	10/25/21	N.S.
-	-	EO-0392	07/20/04	-

COPYRIGHT 2005 BRASSTECH, INC. THESE DRAWINGS AND THE DESIGNS DEPICTED HEREIN ARE THE PROPRIETARY PROPERTY OF BRASSTECH. ANY USE OR REPRODUCTION IS SUBJECT TO THE EXPRESS APPROVAL OF BRASSTECH. UNAUTHORIZED USE IS STRICTLY PROHIBITED. ALL RIGHTS RESERVED.

TESTING	ASSEMBLY	PLATING	POLISHING	MACHINING	TOOLING FIXTURE #
-	-	-	-	-	-
APPLICATION					REMOVE ALL BURRS AND SHARP EDGES

UNITS ARE: INCHES [MM]	TOLERANCES ARE:
FRACTIONS DECIMALS	ANGLES
±1/16" .x ±.1 [2,5]	±1° .xx ±.06 [1,5]
(X.XXX) DENOTES CRITICAL DIMS.	ALL THREADS ARE CRITICAL
DRAWN	NMS 10/25/21
CHECKED	W. SANTOS 10/25/21
APPROVED	W. SANTOS 10/25/21

**BRASSTECH** 2001 CARNEGIE AVE. SANTA ANA, CA 92705 (949) 417-5207

INCORPORATED

ANGLE VALVE, CROSS TRADITIONAL

DWG NO. 403X-2

SCALE .500 REF. - SHEET 1 OF 2

D  
C  
B  
A

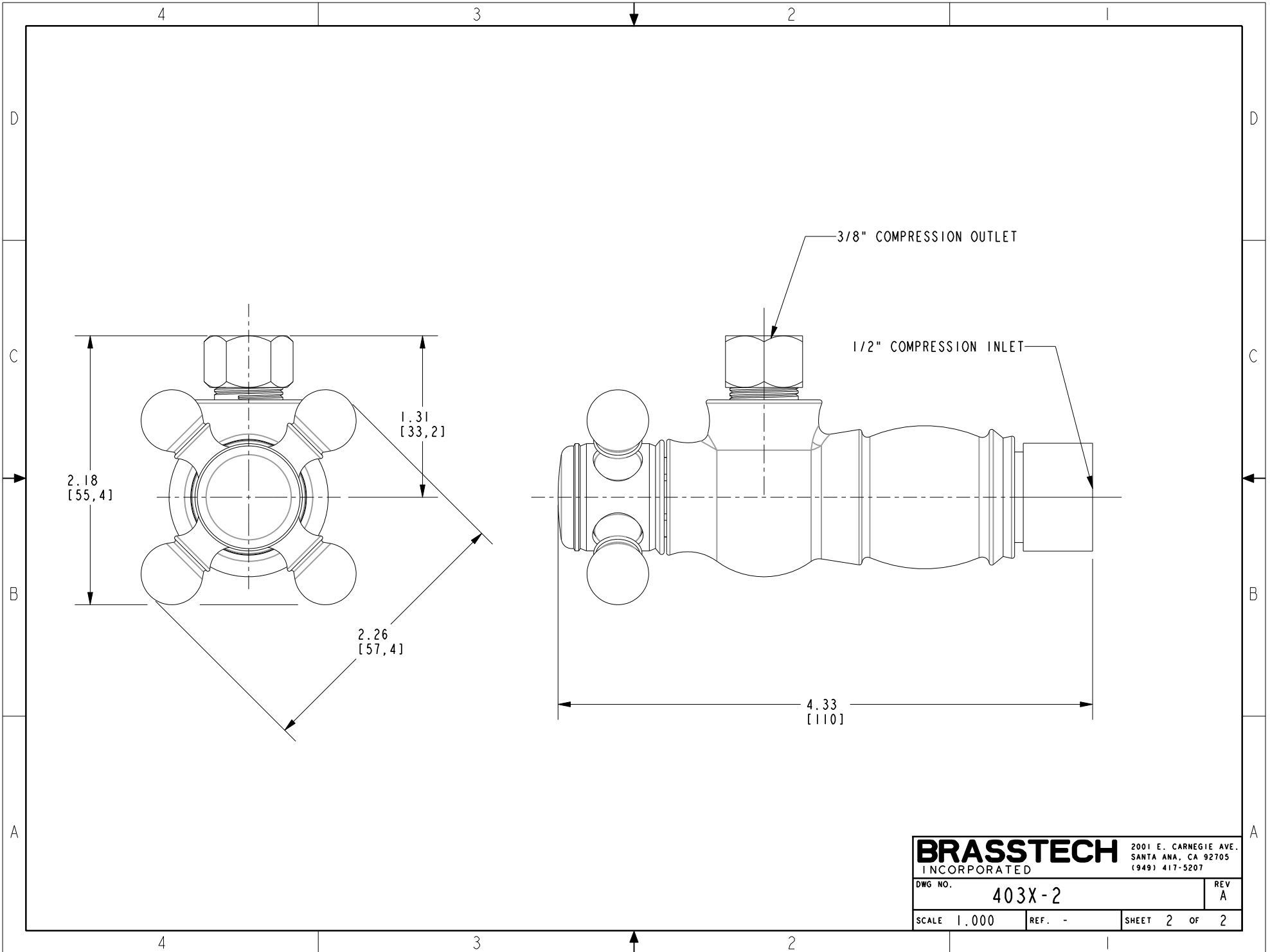
D  
C  
B  
A

4

3

2

1



<b>BRASSTECH</b>		2001 E. CARNEGIE AVE.
INCORPORATED		SANTA ANA, CA 92705
		(949) 417-5207
DWG NO.	403X-2	REV A
SCALE 1.000	REF. -	SHEET 2 OF 2