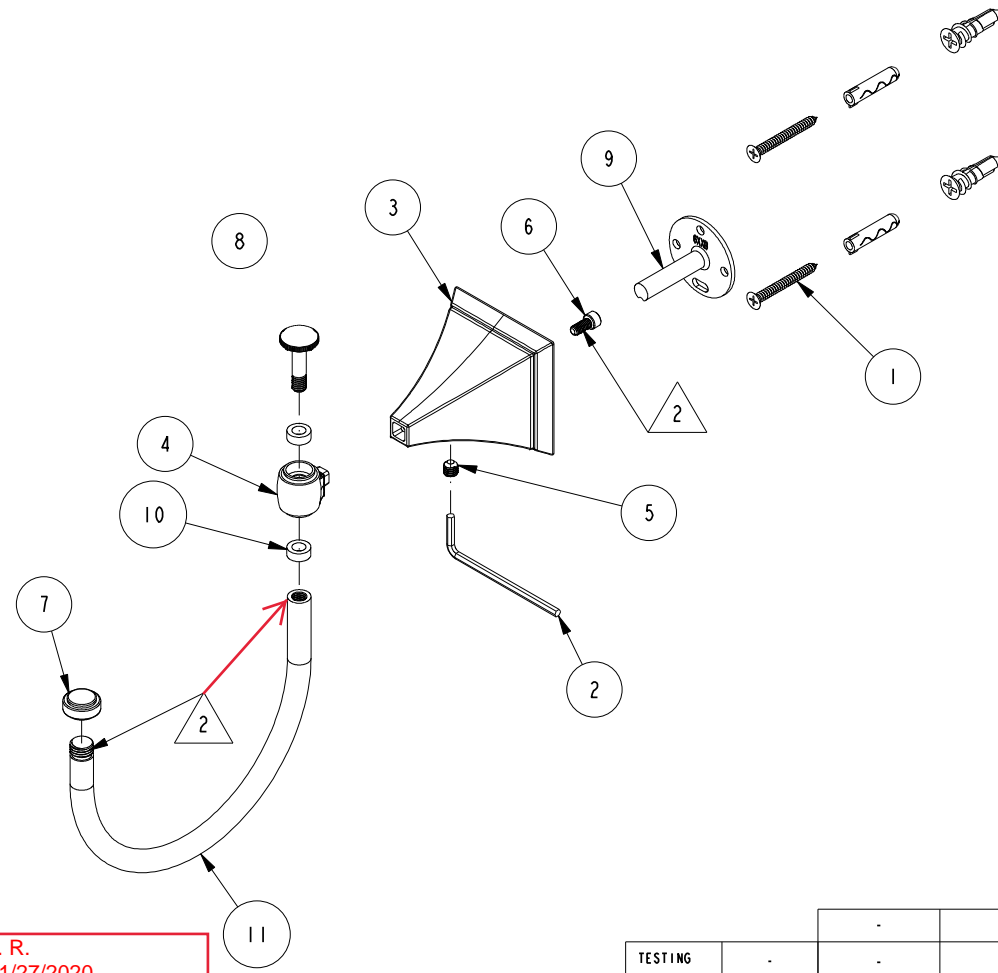


NOTES:

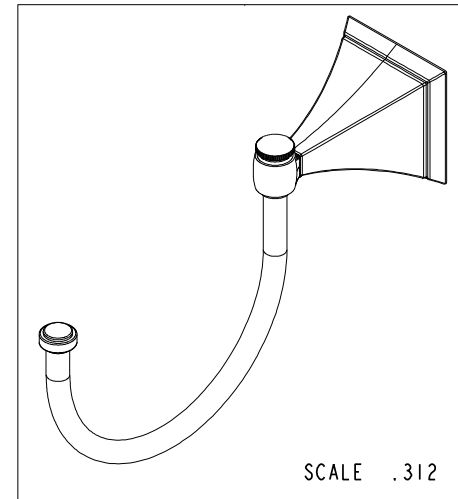
(N1) 1. FIT / FORM / FUNCTION SHALL FOLLOW PS-E.008.

(N2) 2. APPLY LOCTITE 680 AT 18 IN-LB TORQUE.



BILL OF MATERIAL (CURRENT LEVEL)

ITEM	PT/ASSY	DESCRIPTION	TYPE	QTY.
1	1-206	HARDWARE PACK	ASSEMBLY	1
2	10615	HEX KEY, 3MM ALLOY STEEL	PART	1
3	40506	POST, TOWEL BAR	PART	1
4	40511	END POST, PIVOTING ROBE HOOK	PART	1
5	92031	SCRW, M6 X 1 X 6 SKT HD CUP PT W/ SELF LOC SS	PART	1
6	92527	SCRW, 8-32 X 3/8 SKT CAP HD SS	PART	1
7	1805F	TOWEL HOOP FINIAL	PART	1
8	1805S	TOWEL HOOP SCREW	PART	1
9	6XXB	MOUNTING BRACKET	PART	1
10	AS05B	WSHR, .236 ID X .402 OD X .158 THK, FLT, NYLON	PART	2
11	AS05H	TOWEL HOOP BAR	PART	1



J. R.  
01/27/2020

TESTING	-	-	-
ASSEMBLY	-	-	-
PLATING	-	-	-
POLISHING	-	NEXT ASSY	USED ON
MACHINING	-	APPLICATION	
TOOLING FIXTURE #	REMOVE ALL BURRS AND SHARP EDGES		

UNITS ARE: INCHES [MM]  
TOLERANCES ARE:  
FRACTIONS DECIMALS ANGLES  
±1/16" .X ±.1 [2.5] ±1°  
.XX ±.06 [1.5]

(X.XXX) DENOTES CRITICAL DIMS.  
ALL THREADS ARE CRITICAL

DRAWN - -  
CHECKED - -  
APPROVED - -

**BRASSTECH** 2001 CARNEGIE AVE.  
INCORPORATED SANTA ANA, CA 92705  
(949) 417-5207

PIVOTING "J" TOWEL RING

DWG NO. 41-11 REV B

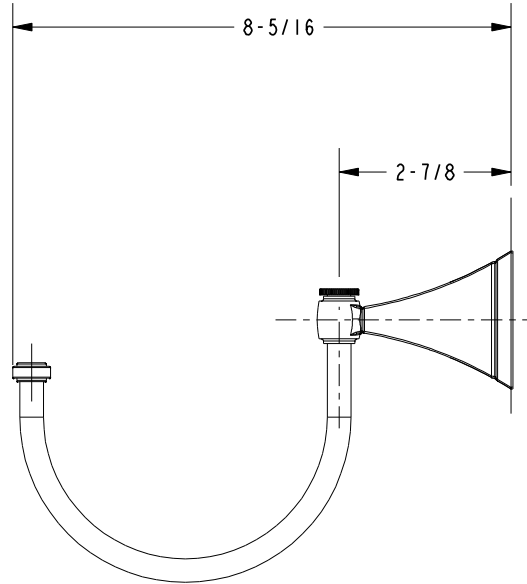
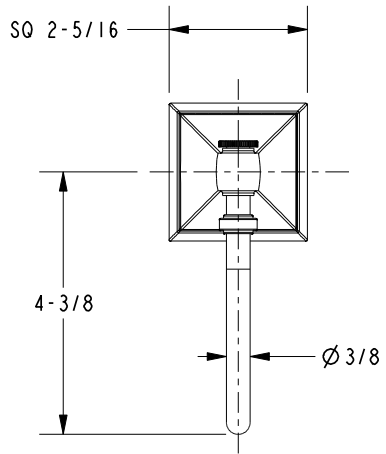
SCALE .313 REF. - SHEET 1 OF 2

D  
C  
B  
A

D  
C  
B  
A

4 3 2 1

4 3 2 1



<b>BRASSTECH</b>		2001 E. CARNEGIE AVE. SANTA ANA, CA 92705 (949) 417-5207	
DWG NO.	41-11	REV	B
SCALE	.313	REF.	-
		SHEET	2 OF 2