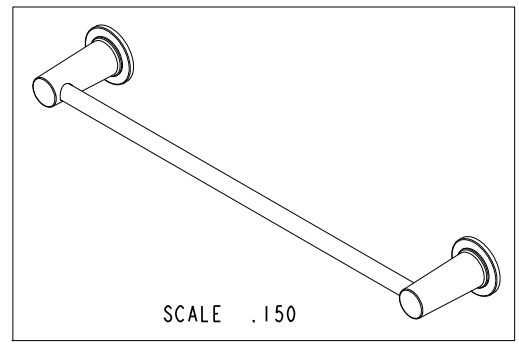
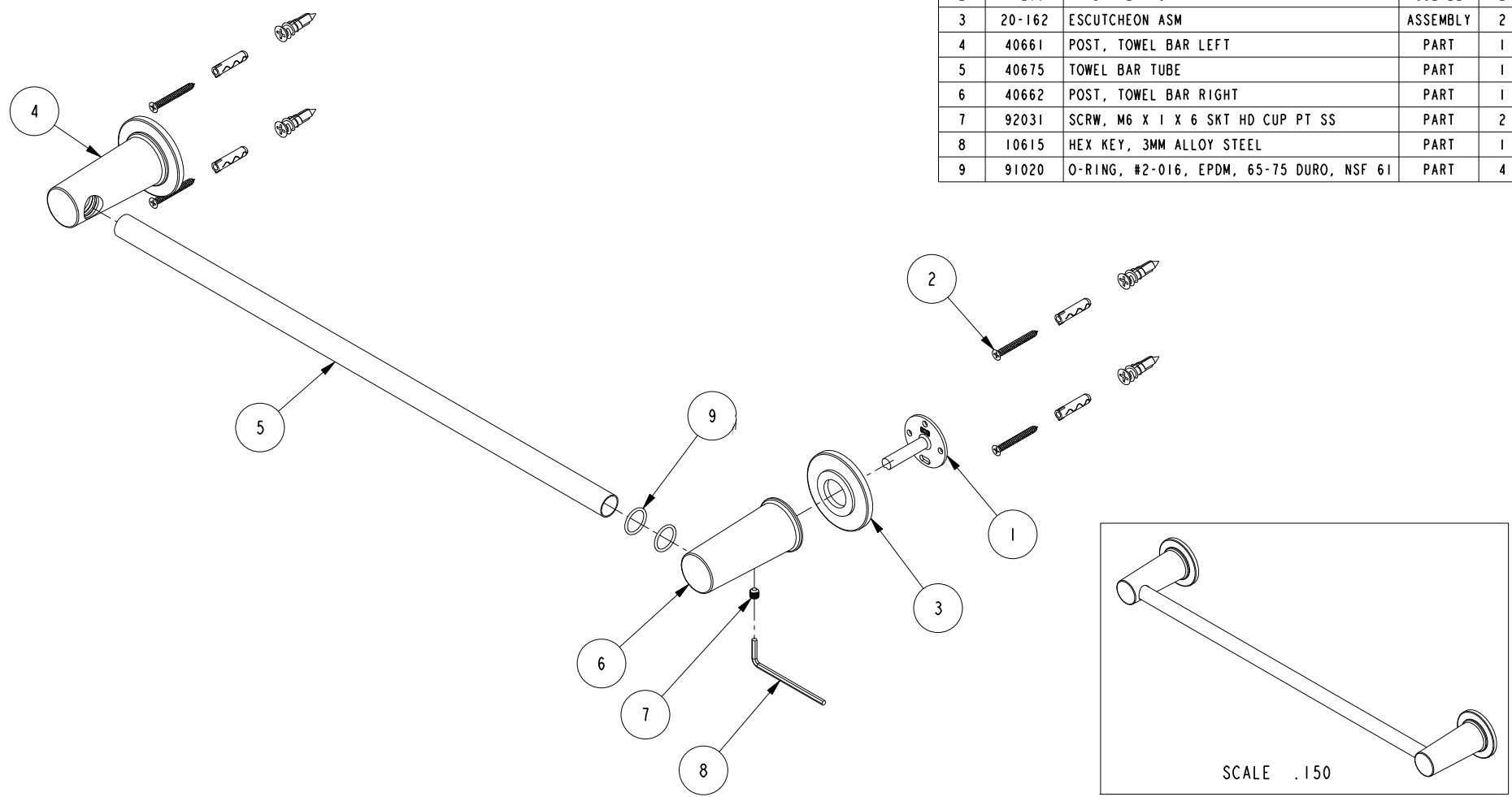


NOTES:

(NI) 1. FIT / FORM / FUNCTION SHALL FOLLOW PS-E.008.

BILL OF MATERIAL (CURRENT LEVEL)

ITEM	PT/ASSY	DESCRIPTION	TYPE	QTY.
1	6XXB	MOUNTING BRACKET	PART	2
2	1-206	HARDWARE PACK	ASSEMBLY	2
3	20-162	ESCUTCHEON ASM	ASSEMBLY	2
4	40661	POST, TOWEL BAR LEFT	PART	1
5	40675	TOWEL BAR TUBE	PART	1
6	40662	POST, TOWEL BAR RIGHT	PART	1
7	92031	SCRW, M6 X 1 X 6 SKT HD CUP PT SS	PART	2
8	10615	HEX KEY, 3MM ALLOY STEEL	PART	1
9	91020	O-RING, #2-016, EPDM, 65-75 DURO, NSF 61	PART	4



COPYRIGHT 2005 BRASSTECH, INC. THESE DRAWINGS AND THE DESIGNS DEPICTED HEREIN ARE THE PROPRIETARY PROPERTY OF BRASSTECH. ANY USE OR REPRODUCTION IS SUBJECT TO THE EXPRESS APPROVAL OF BRASSTECH. UNAUTHORIZED USE IS STRICTLY PROHIBITED. ALL RIGHTS RESERVED.

TESTING	-	-	-
ASSEMBLY	-	-	-
PLATING	-		
POLISHING	-	NEXT ASSY	USED ON
MACHINING	-	APPLICATION	
TOOLING FIXTURE #		REMOVE ALL BURRS AND SHARP EDGES	

UNITS ARE: INCHES [MM]
 TOLERANCES ARE:
 FRACTIONS DECIMALS ANGLES
 $\pm 1/16"$.X $\pm .1$ [2,5] $\pm 1^\circ$
 .XX $\pm .06$ [1,5]
 (X.XXX) DENOTES CRITICAL DIMS.
 ALL THREADS ARE CRITICAL
 DRAWN RAVINDRA 10/12/16
 CHECKED JINSON 10/12/16
 APPROVED J.M 10/12/16

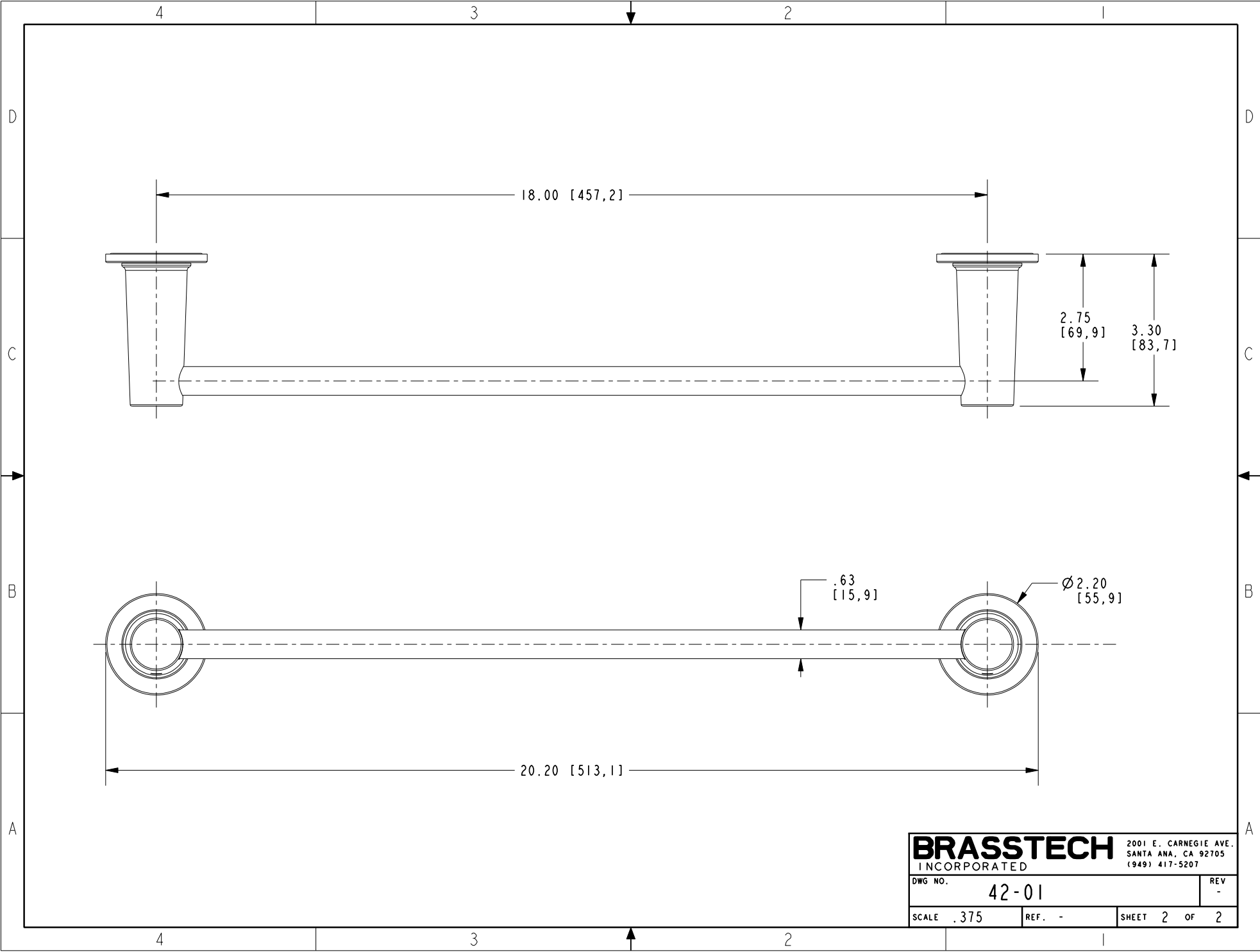
BRASSTECH 2001 CARNEGIE AVE.
 INCORPORATED SANTA ANA, CA 92705
 (949) 417-5207

18" TOWEL BAR

DWG NO. 42-01 REV -

SCALE .250 REF. - SHEET 1 OF 2

-	-	EN-3133	10/12/16	J.M
ZONE	REV	DESCRIPTION	DATE	APPROVED



BRASSTECH		2001 E. CARNEGIE AVE.	
INCORPORATED		SANTA ANA, CA 92705	
		(949) 417-5207	
DWG NO.	42-01	REV	-
SCALE	.375	REF.	-
		SHEET	2 OF 2