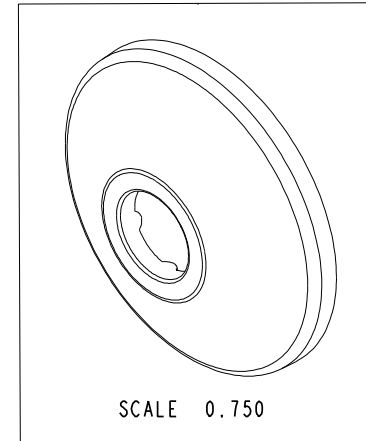
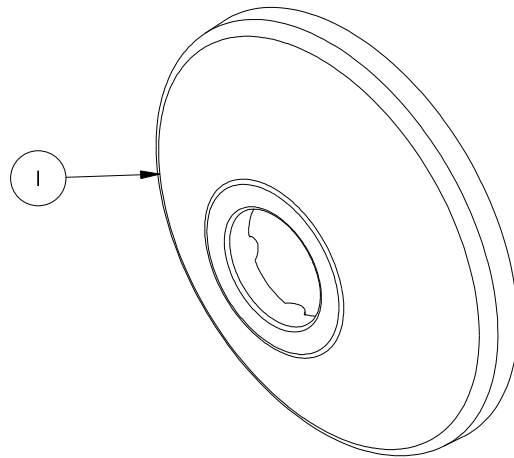


NOTES:

1. TO INSPECT ASSEMBLY, FOLLOW FIRST ARTICLE AND IN PROCESS INSPECTION SHEET.

BILL OF MATERIAL (CURRENT LEVEL)

ITEM	PT/ASSY	DESCRIPTION	TYPE	QTY.
1	50850	FLANGE (440)	PART	1



ZONE	REV	DESCRIPTION	DATE	APPROVED
-	C	EN-4300ii	10/11/21	R.S.
-	B	EN-2948	09/15/15	V.V.
-	A	EO-0937	01/30/08	V.V.
-	-	RELEASE	PRE-95	-

COPYRIGHT 2005 BRASSTECH, INC. THESE DRAWINGS AND THE DESIGNS DEPICTED HEREIN ARE THE PROPRIETARY PROPERTY OF BRASSTECH. ANY USE OR REPRODUCTION IS SUBJECT TO THE EXPRESS APPROVAL OF BRASSTECH. UNAUTHORIZED USE IS STRICTLY PROHIBITED. ALL RIGHTS RESERVED.

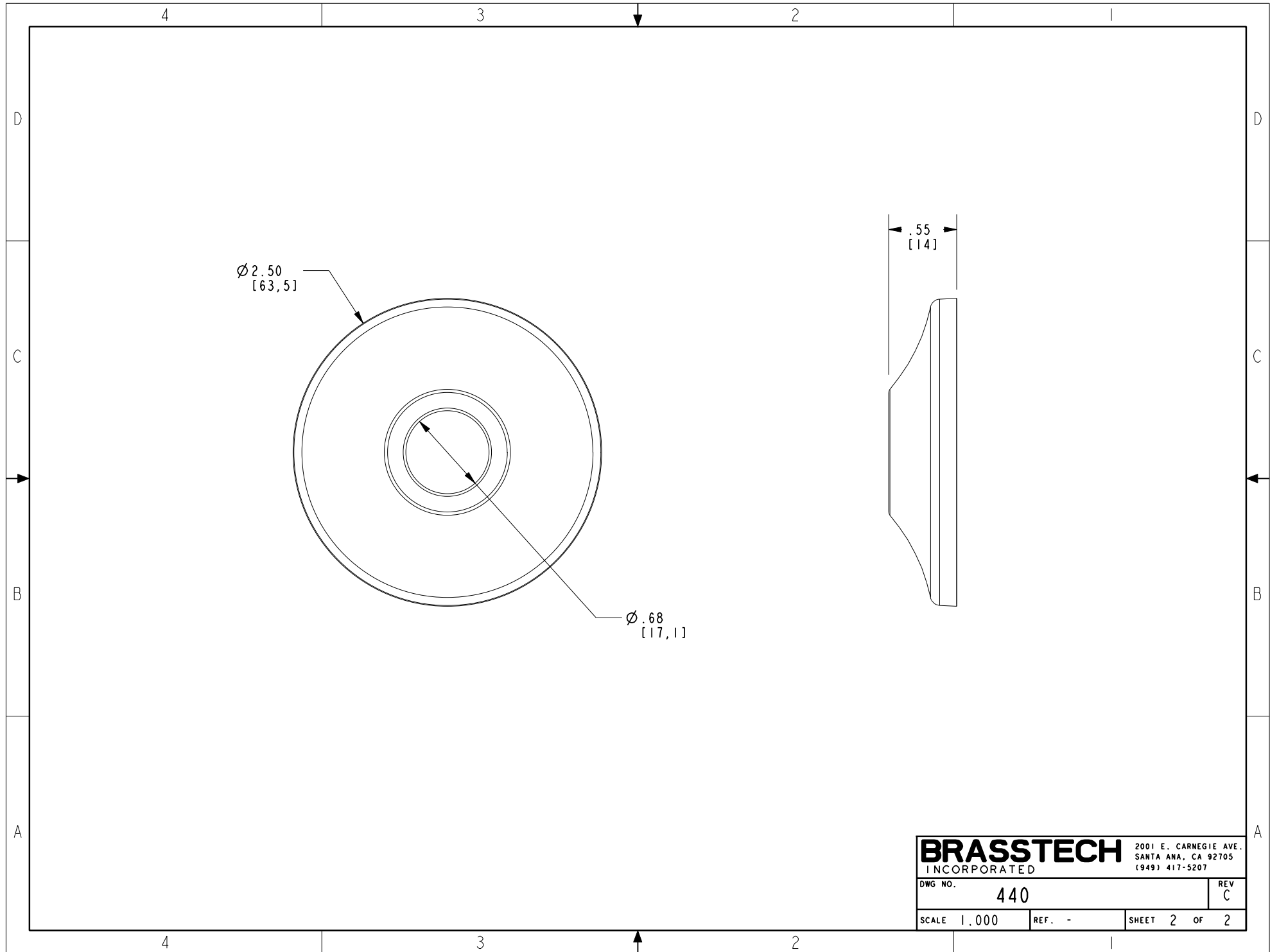
TESTING	-	-	-
ASSEMBLY	-	-	-
PLATING	-	-	-
POLISHING	-	NEXT ASSY	USED ON
MACHINING	-	APPLICATION	
TOOLING FIXTURE #	REMOVE ALL BURRS AND SHARP EDGES		

UNITS ARE: INCHES [MM]		
TOLERANCES ARE:		
FRACTIONS	DECIMALS	ANGLES
±1/16"	.X ±.1 [2.5]	±1°
	.XX ±.06 [1.5]	
(X.XXX) DENOTES CRITICAL DIMS. ALL THREADS ARE CRITICAL		
DRAWN	H. LE	01/30/08
CHECKED	V. VU	01/30/08
APPROVED	V. VU	01/30/08

BRASSTECH 2001 CARNEGIE AVE. SANTA ANA, CA 92705 (949) 417-5207
INCORPORATED

FLANGE

DWG NO.	440	REV	C
SCALE	1.000	REF.	-
SHEET	1	OF	2



Ø 2.50
[63,5]

Ø .68
[17,1]

.55
[14]

BRASSTECH 2001 E. CARNEGIE AVE.
INCORPORATED SANTA ANA, CA 92705
(949) 417-5207

DWG NO.	440	REV	C
---------	-----	-----	---

SCALE	1.000	REF.	-	SHEET	2	OF	2
-------	-------	------	---	-------	---	----	---