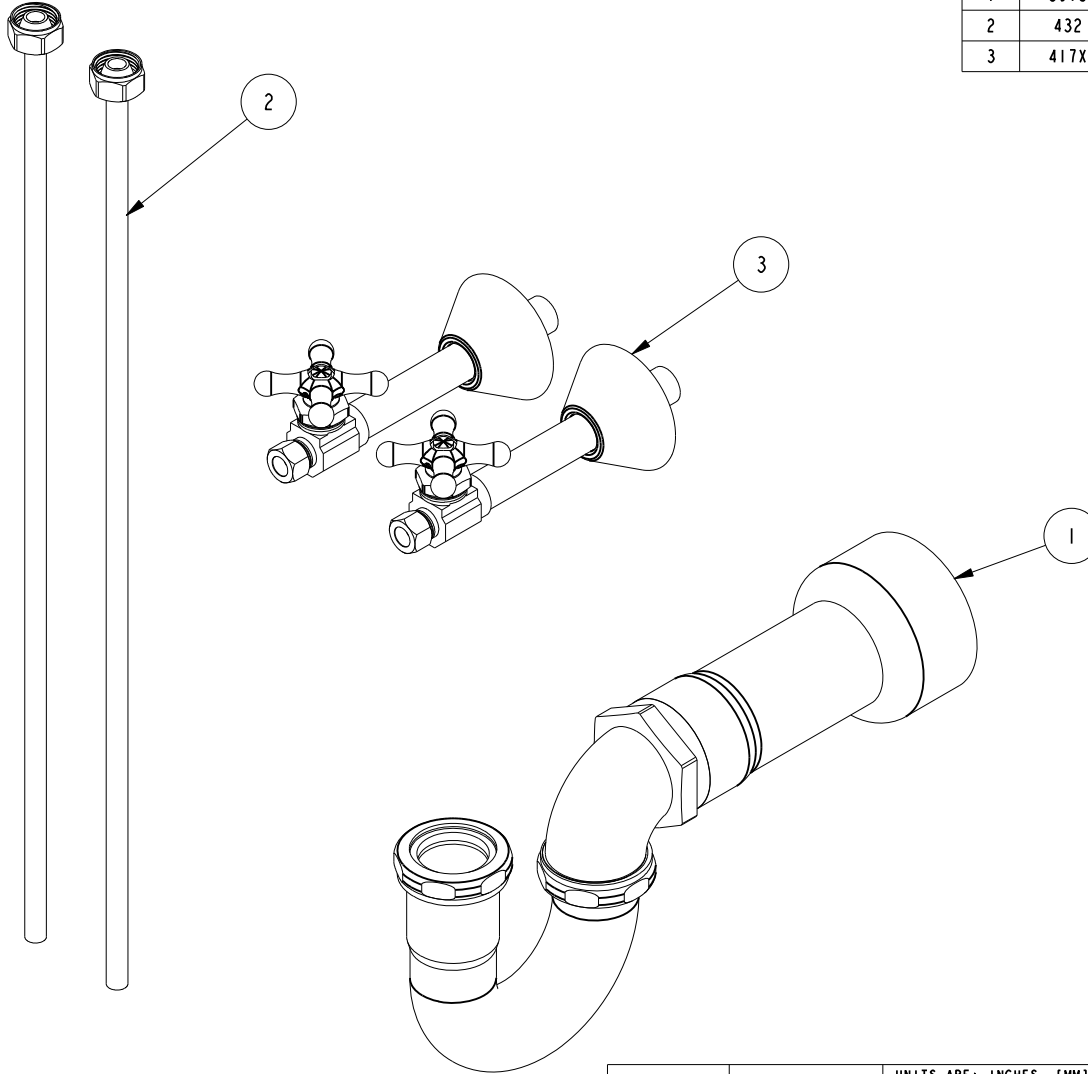


NOTES:

(NI) 1. FIT / FORM / FUNCTION SHALL FOLLOW PS-E.008.

BILL OF MATERIAL (CURRENT LEVEL)

ITEM	PT/ASSY	DESCRIPTION	TYPE	QTY.
1	3015	P-TRAP KIT ABS/PVC	ASSEMBLY	1
2	432	SUPPLY TUBE 3/8	ASSEMBLY	2
3	417X	STRAIGHT VALVE W/ X HDL 1/2" SWT 3/8"	ASSEMBLY	2



UNITS ARE: INCHES [MM]
 TOLERANCES ARE:
 FRACTIONS DECIMALS ANGLES
 ±1/16" .X ±.1 [2.5] ±1°
 .XX ±.06 [1.5]
 (X.XXX) DENOTES CRITICAL DIMS.
 ALL THREADS ARE CRITICAL
 DRAWN RAVINDRA 07/20/15
 CHECKED JINSON 07/20/15
 APPROVED H.LE 07/20/15

BRASSTECH 2001 CARNEGIE AVE.
 INCORPORATED SANTA ANA, CA 92705
 (949) 417-5207

FCT CONNECTION KIT

DWG NO. 4771 REV A
 SCALE .300 REF. - SHEET | OF |

COPYRIGHT 2005 BRASSTECH, INC.
 THESE DRAWINGS AND THE DESIGNS
 DEPICTED HEREIN ARE THE PROPRIETARY
 PROPERTY OF BRASSTECH. ANY USE
 OR REPRODUCTION IS SUBJECT TO
 THE EXPRESS APPROVAL OF BRASSTECH.
 UNAUTHORIZED USE IS STRICTLY
 PROHIBITED. ALL RIGHTS RESERVED.

TESTING	ASSEMBLY	PLATING	POLISHING	MACHINING	TOOLING FIXTURE #
-	-	-	-	-	
-	-	-	-	-	
-	-	-	NEXT ASSY	USED ON	
-	-	-	-	-	
APPLICATION					
REMOVE ALL BURRS AND SHARP EDGES					

ZONE	REV	DESCRIPTION	DATE	APPROVED
-	A	EN-3464	11/13/17	V.V.
-	-	RELEASE	07/20/15	H.LE