

NOTES:

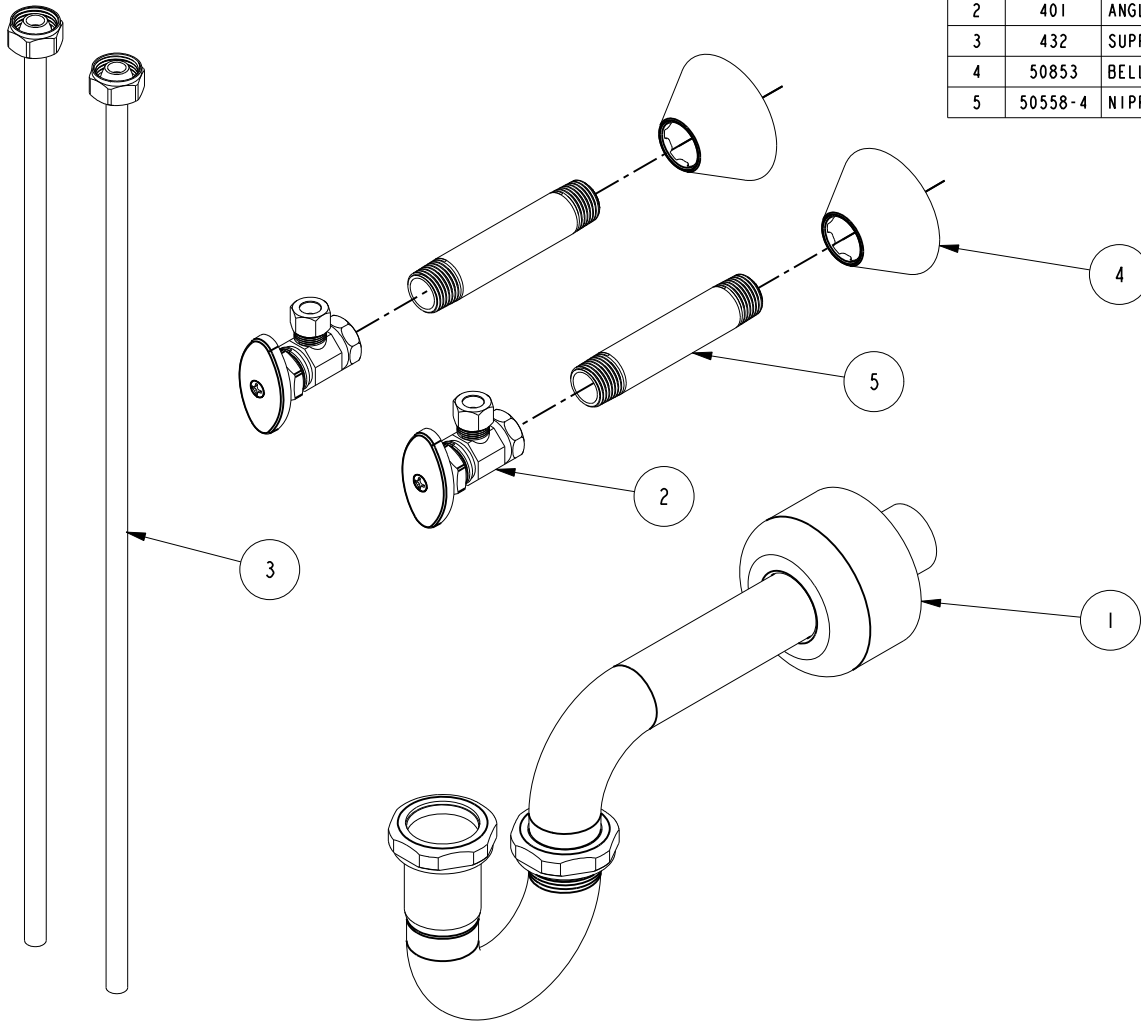
(N1) 1. FIT / FORM / FUNCTION SHALL FOLLOW PS-E.008.

BILL OF MATERIAL (CURRENT LEVEL)

ITEM	PT/ASSY	DESCRIPTION	TYPE	QTY.
1	3014	P-TRAP ASM 1-1/4" W/ BOX FLANGE	ASSEMBLY	1
2	401	ANGLE VALVE 1/2" IPS X 3/8" CMP	ASSEMBLY	2
3	432	SUPPLY TUBE 3/8	ASSEMBLY	2
4	50853	BELL FLANGE	PART	2
5	50558-4	NIPPLE 1/2-14 X 4"	PART	2

D
C
B
A

D
C
B
A



ZONE	REV	DESCRIPTION	DATE	APPROVED
-	A	EN-3464	11/13/17	V.V.
-	-	RELEASE	07/20/15	H.LE

COPYRIGHT 2005 BRASSTECH, INC. THESE DRAWINGS AND THE DESIGNS DEPICTED HEREIN ARE THE PROPRIETARY PROPERTY OF BRASSTECH. ANY USE OR REPRODUCTION IS SUBJECT TO THE EXPRESS APPROVAL OF BRASSTECH. UNAUTHORIZED USE IS STRICTLY PROHIBITED. ALL RIGHTS RESERVED.

TESTING	ASSEMBLY	PLATING	POLISHING	MACHINING	TOOLING FIXTURE #
-	-	-	-	-	REMOVE ALL BURRS AND SHARP EDGES

UNITS ARE: INCHES (MM)	
TOLERANCES ARE:	
FRACTIONS	DECIMALS
±1/16"	.X ±.1 (2.5)
	.XX ±.06 (1.5)
(X.XXX) DENOTES CRITICAL DIMS. ALL THREADS ARE CRITICAL	
DRAWN	RAVINDRA 07/20/15
CHECKED	JINSON 07/20/15
APPROVED	H.LE 07/20/15

BRASSTECH 2001 CARNEGIE AVE. SANTA ANA, CA 92705 (949) 417-5207
INCORPORATED

FCT CONNECTION KIT

DWG NO. 4777

SCALE .300 REF. - SHEET | OF |

4 3 2 1