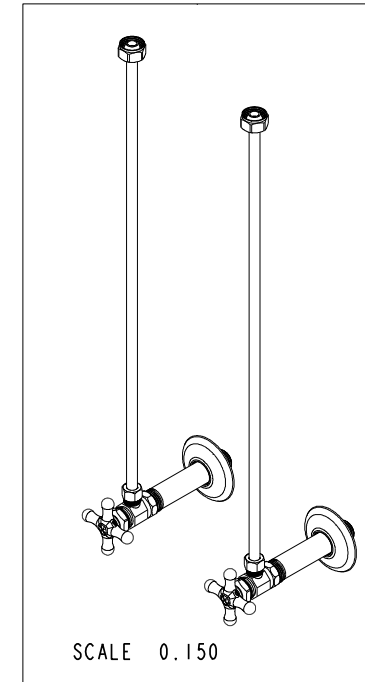
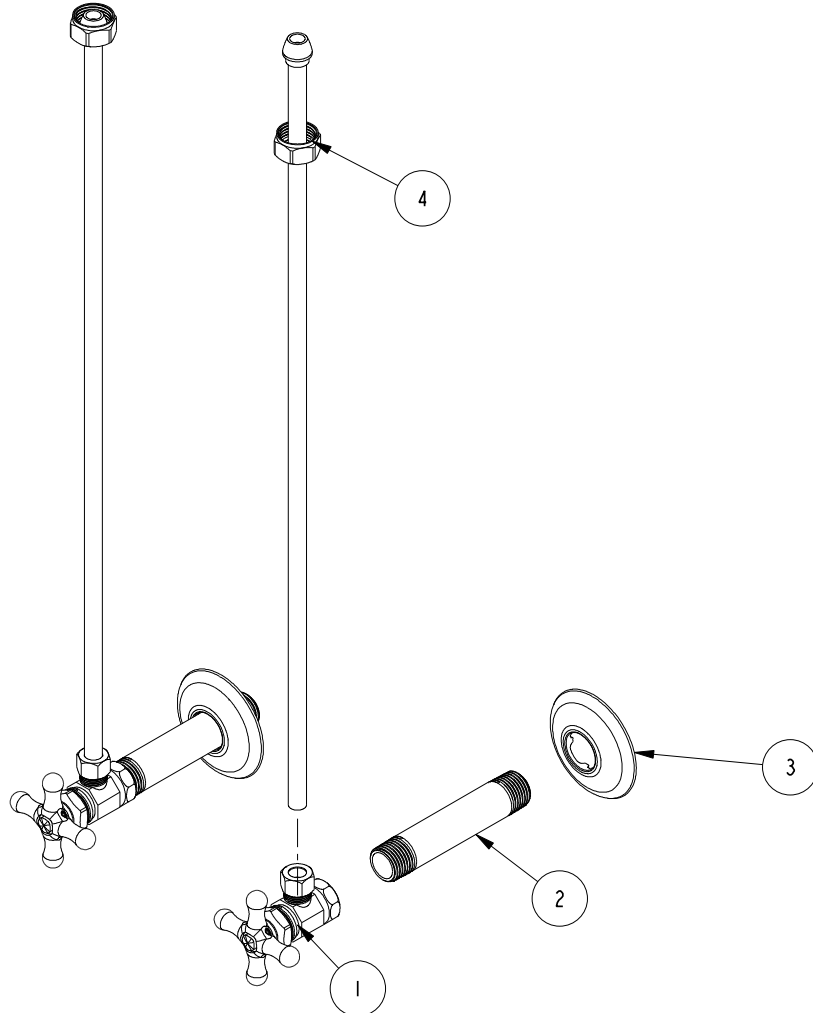


NOTES:

1. TO INSPECT ASSEMBLY, FOLLOW FIRST ARTICLE AND IN PROCESS INSPECTION SHEET.

BILL OF MATERIAL (CURRENT LEVEL)

ITEM	PT/ASSY	DESCRIPTION	TYPE	QTY.
1	401X	ANGLE VALVE 1/2" IPS X 3/8" CMP W/ X HDL	ASSEMBLY	2
2	450	NIPPLE	ASSEMBLY	2
3	442	BRASS FLANGE	PART	2
4	432	SUPPLY TUBE 3/8	ASSEMBLY	2



TESTING	-	-	-
ASSEMBLY	-	-	-
PLATING	-	-	-
POLISHING	-	NEXT ASSY	USED ON
MACHINING	-	APPLICATION	
TOOLING FIXTURE #	REMOVE ALL BURRS AND SHARP EDGES		

UNITS ARE: INCHES [MM]	
TOLERANCES ARE:	
FRACTIONS	DECIMALS ANGLES
±1/16"	±.001 ±1°
.X ±.1	[2.5]
.XX ±.06	[1.5]
(X.XXX) DENOTES CRITICAL DIMS.	
ALL THREADS ARE CRITICAL	
DRAWN	H.L. 02/09/11
CHECKED	H.L. 02/09/11
APPROVED	H.L. 02/09/11

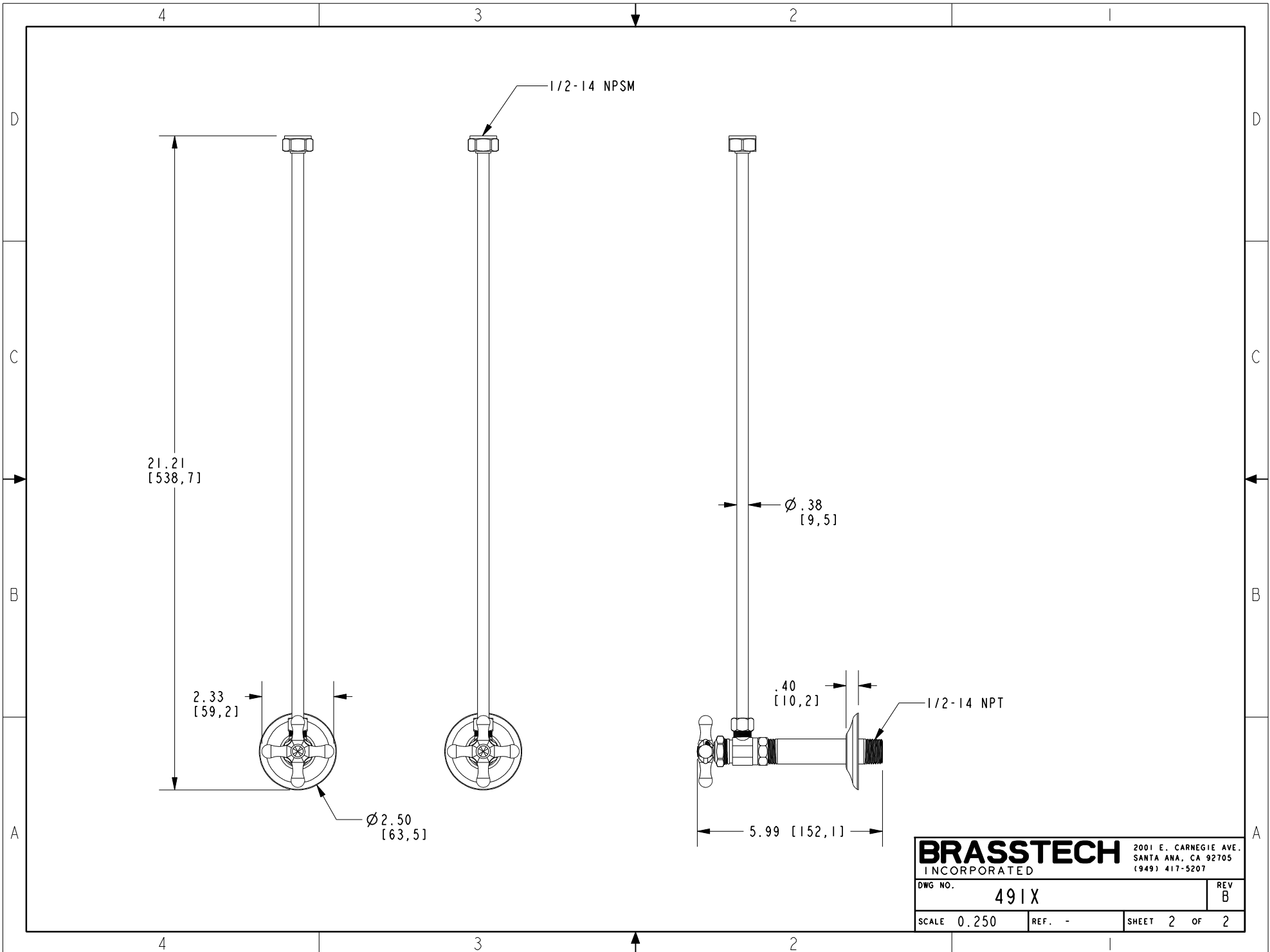
BRASSTECH 2001 CARNEGIE AVE.
INCORPORATED SANTA ANA, CA 92705
(949) 417-5207

**1/2" IPS X 3/8" O.D
SUPPLY KIT**

DWG NO. **491X** REV **B**

SCALE .250 REF. - SHEET 1 OF 2

-	B	EN-430011	10/21/21	R.S.	COPYRIGHT 2005 BRASSTECH, INC. THESE DRAWINGS AND THE DESIGNS DEPICTED HEREIN ARE THE PROPRIETARY PROPERTY OF BRASSTECH. ANY USE OR REPRODUCTION IS SUBJECT TO THE EXPRESS APPROVAL OF BRASSTECH. UNAUTHORIZED USE IS STRICTLY PROHIBITED. ALL RIGHTS RESERVED.
-	A	EN-1919	10/04/11	H.L.	
-	-	EN-1700	02/09/11	H.L.	
ZONE	REV	DESCRIPTION	DATE	APPROVED	



BRASSTECH		2001 E. CARNEGIE AVE. SANTA ANA, CA 92705 (949) 417-5207	
DWG NO.	491X	REV	B
SCALE	0.250	REF.	-
		SHEET	2 OF 2