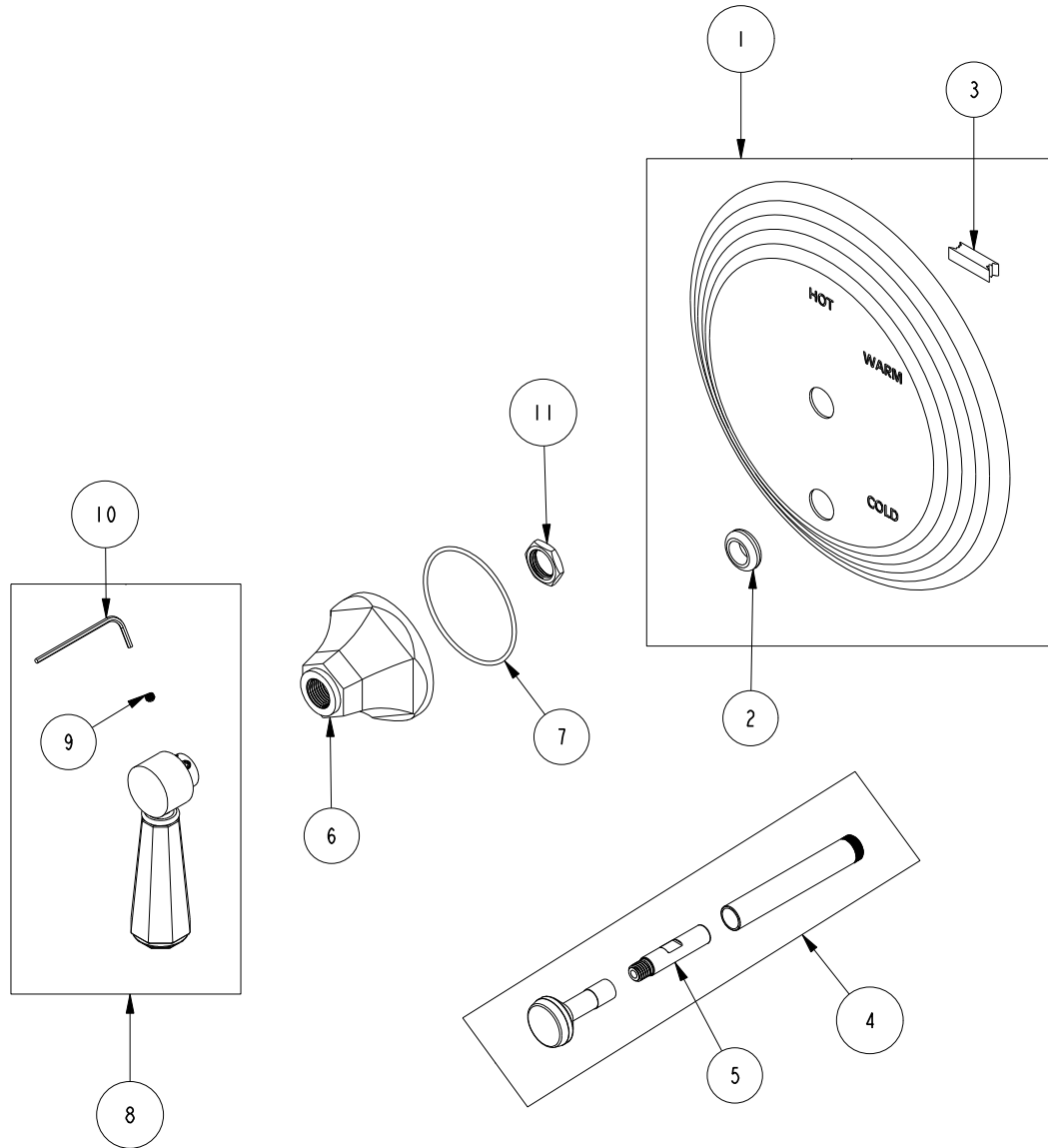


REPLACEMENT PARTS

ITEM	PT/ASSY	SPECIFY FINISH	DESCRIPTION
1	2-224	YES	COVERPLATE BP W/DIVERTER
2	91033		GROMMET
3	H-78		TAPE NEO
4	2-217	YES	DIVERTER TRIM KIT
5	91065		UPPER LINK PLASTIC DIVERTER
6	10960	YES	HEX ESCUTCHEON
7	91754		O-RING, #2-034, EPDM, 50 DURO - GREY
8	2-876	YES	CRYSTAL HANDLE LEVER ASM
9	92000		SCREW 8 - 32 X 1/8 SS
10	10192		HEX KEY TOOL, #8 5/64
11	10259		HEX NUT 9/16 X 20 MADE



BP TRIM PLATE WITH DIVERTER
5-1232BP

REV E EN-4847 07/25/24

NEWPORT BRASS.

t: 949.417.5207 | www.newportbrass.com