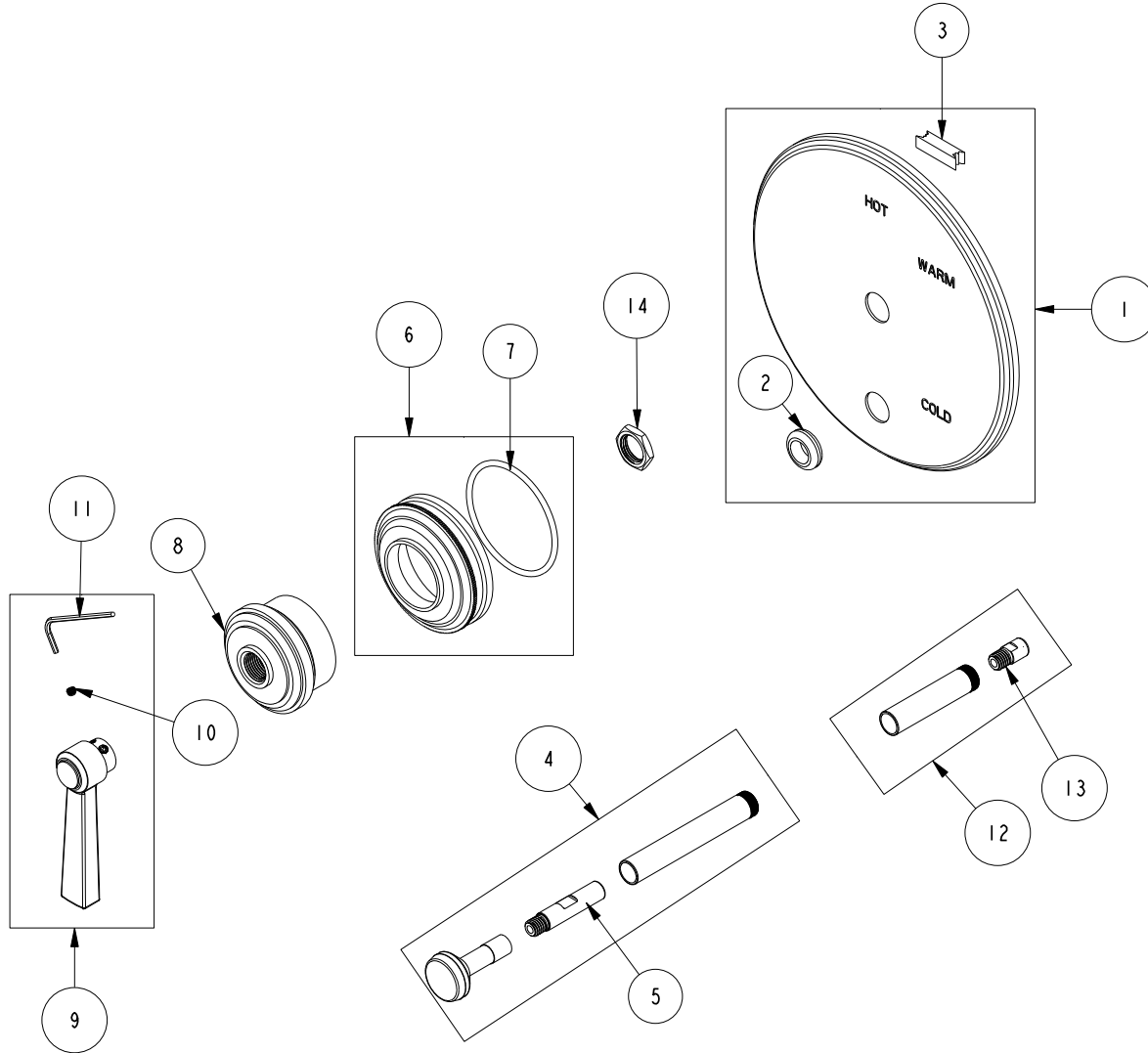


# REPLACEMENT PARTS

ITEM	PT/ASSY	SPECIFY FINISH	DESCRIPTION
1	2-438	YES	COVERPLATE BP W/DIV ASM
2	91033		GROMMET
3	H-78		TAPE NEO
4	2-217	YES	DIVERTER TRIM KIT
5	91065		UPPER LINK PLASTIC DIVERTER
6	20-737	YES	ESCUTCHEON ASM
7	91752		O-RING, #2- 137, EPDM, 50 DURO
8	11089	YES	HANDLE BONNET
9	2-436	YES	LEVER HANDLE ASM
10	92000		SCREW 8 - 32 X 1/8 SS
11	10192		HEX KEY TOOL, #8 5/64
12	2-894	YES	DIVERTER TRIM KIT (SHORT)
13	12068		UPPER LINK PLASTIC DIVERTER
14	10259		HEX NUT 9/16 X 20 MADE



**BP TRIM PLATE WITH DIVERTER**  
**5-1622BP**

REV D EN-4847 07/25/24

**NEWPORT BRASS.**

t: 949.417.5207 | www.newportbrass.com