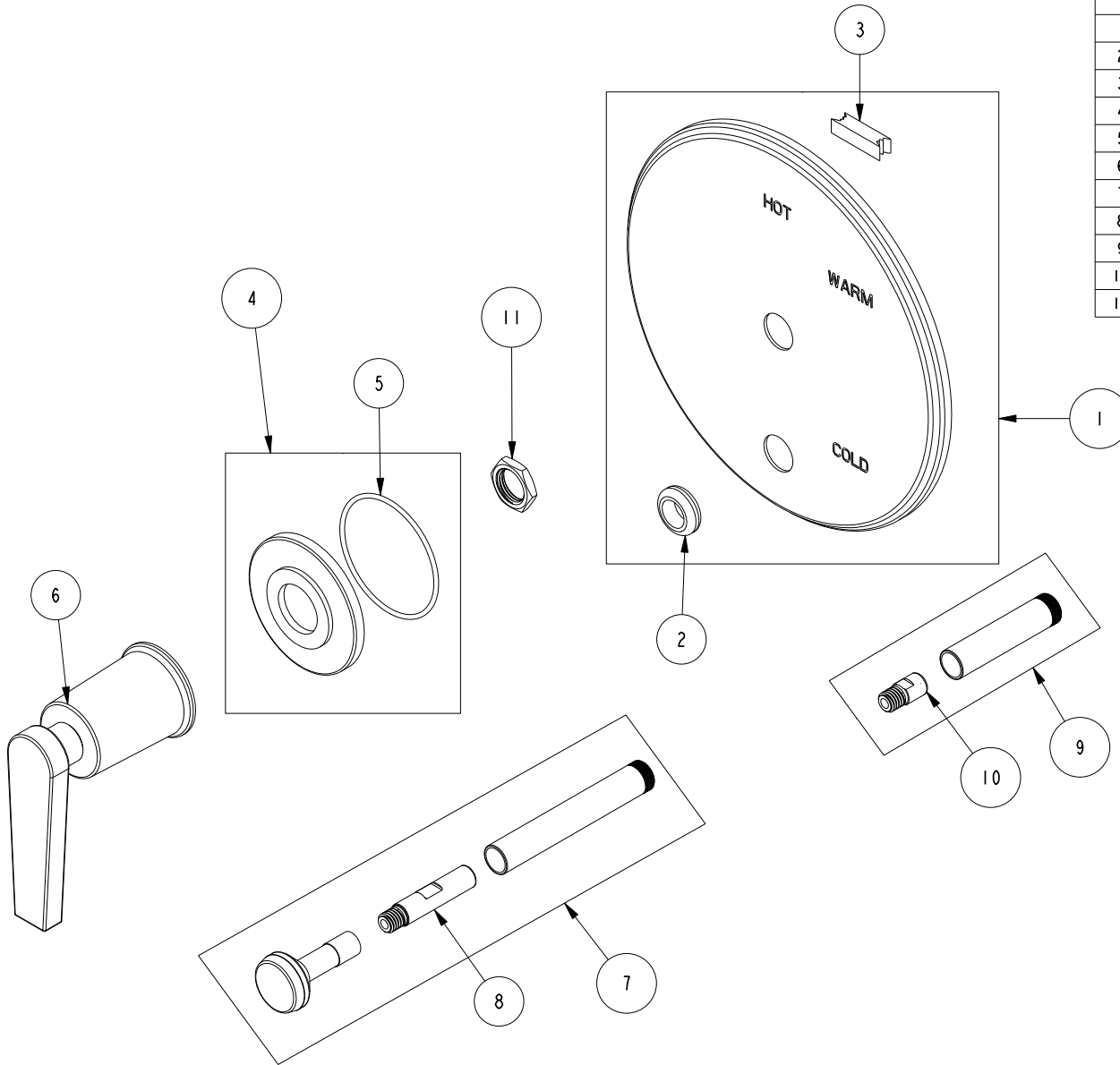


REPLACEMENT PARTS

ITEM	PT/ASSY	SPECIFY FINISH	DESCRIPTION
1	2-438	YES	COVERPLATE BP W/DIV ASM
2	91033		GROMMET
3	H-78		TAPE NEO
4	20-162	YES	ESCUTCHEON ASM
5	91758		O-RING, #2-032, EPDM, 50 DURO - GREY
6	20-163	YES	LEVER HANDLE ASSEMBLY
7	2-217	YES	DIVERTER TRIM KIT
8	91065		UPPER LINK PLASTIC DIVERTER
9	2-894	YES	DIVERTER TRIM KIT (SHORT)
10	12068		UPPER LINK PLASTIC DIVERTER
11	10259		HEX NUT 9/16 X 20 MADE



BP TUB & SHOWER TRIM
5-2972BP

REV C EN-4847 07/23/24

NEWPORT BRASS.

t: 949.417.5207 | www.newportbrass.com