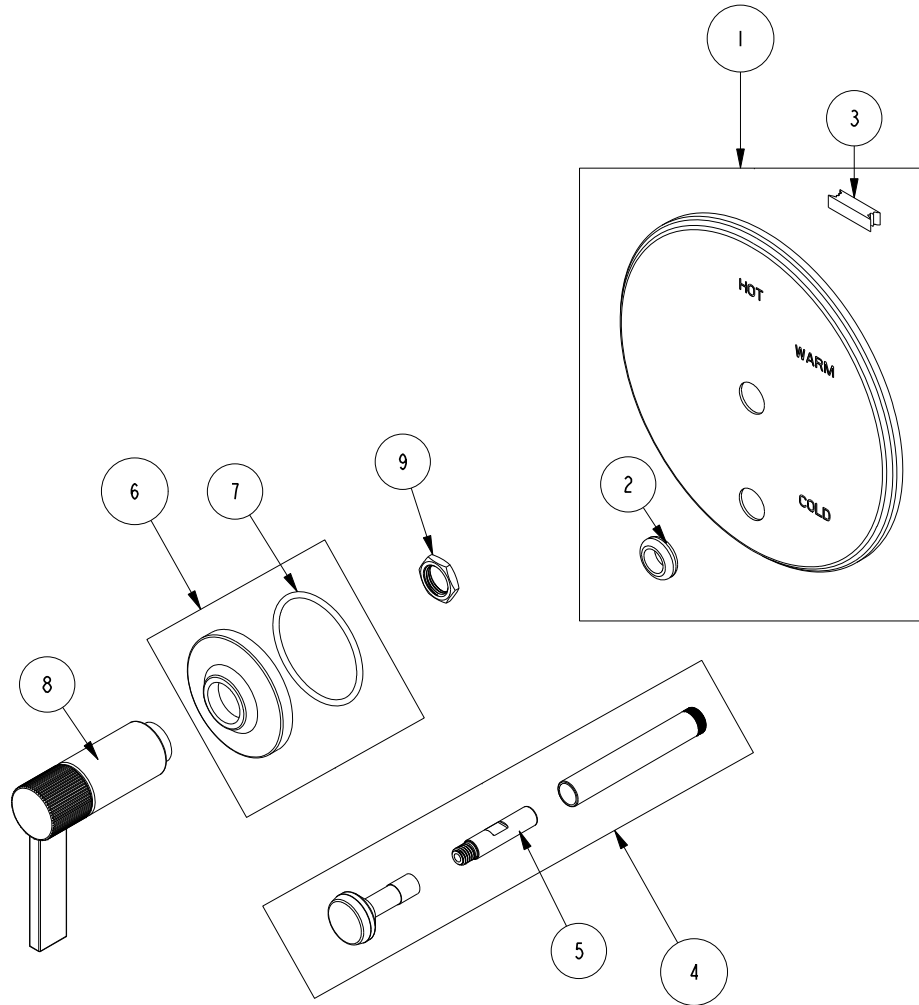


# REPLACEMENT PARTS

ITEM	PT/ASSY	SPECIFY FINISH	DESCRIPTION
1	2-438	YES	COVERPLATE BP W/DIV ASM
2	91033		GROMMET
3	H-78		TAPE NEO
4	2-217	YES	DIVERTER TRIM KIT
5	91065		UPPER LINK PLASTIC DIVERTER
6	20-431	YES	ESCUTCHEON ASM
7	91756		O-RING #2-134, EP, 50 DURO - GREY
8	20-425	YES	LEVER HANDLE ASM
9	10259		HEX NUT 9/16 X 20 MADE



**BP TUB & SHOWER TRIM**  
**5-3232BP**

REV C EN-4847 07/24/24

**NEWPORT BRASS.**

t: 949.417.5207 | [www.newportbrass.com](http://www.newportbrass.com)