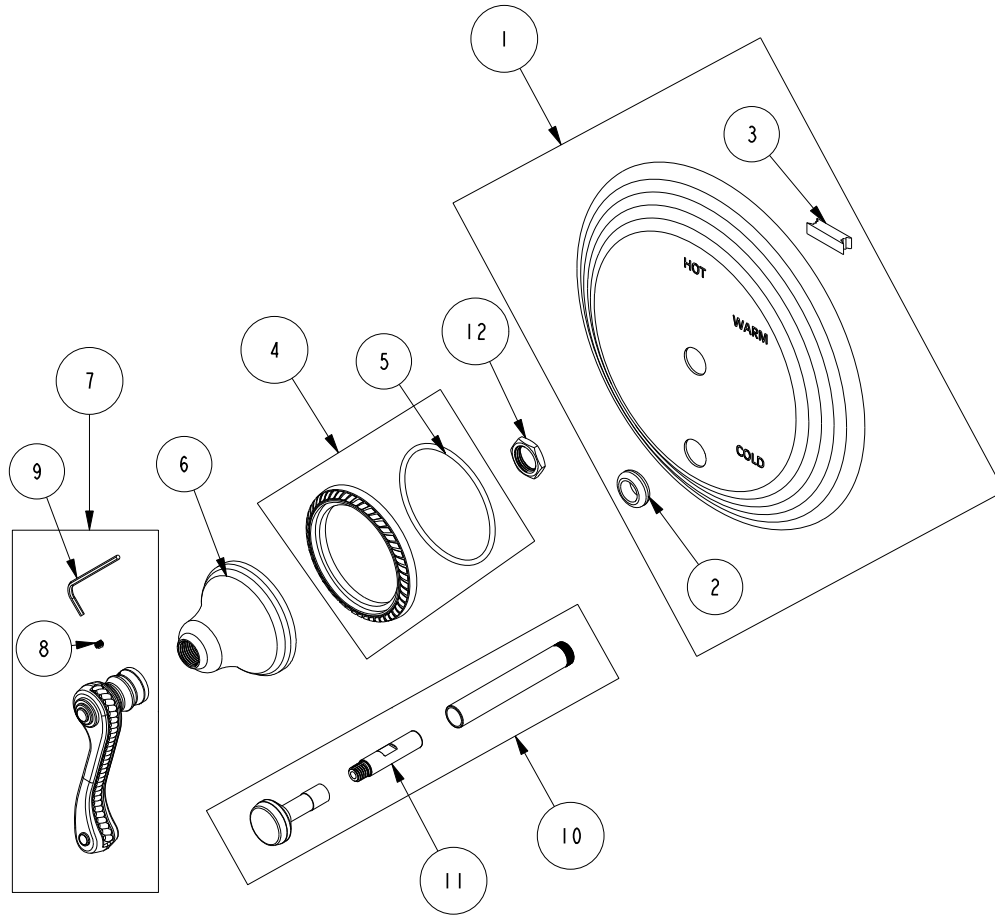


REPLACEMENT PARTS

ITEM	PT/ASSY	SPECIFY FINISH	DESCRIPTION
1	2-224	YES	COVERPLATE BP W/DIVERTER
2	91033		GROMMET
3	H-78		TAPE NEO
4	20-727	YES	ESCUTCHEON ASM
5	91755		O-RING, #2-142, EPDM, 50 DURO - GREY
6	10437	YES	ESCUTCHEON
7	2-181	YES	HANDLE ASM - LEFT
8	92000		SCREW 8 - 32 X 1/8 SS
9	10192		HEX KEY TOOL, #8 5/64
10	2-217	YES	DIVERTER TRIM KIT
11	91065		UPPER LINK PLASTIC DIVERTER
12	10259		HEX NUT 9/16 X 20 MADE



BP TRIM PLATE WITH DIVERTER
5-982BP

REV D EN-4847 07/22/24

NEWPORT BRASS.

t: 949.417.5207 | www.newportbrass.com