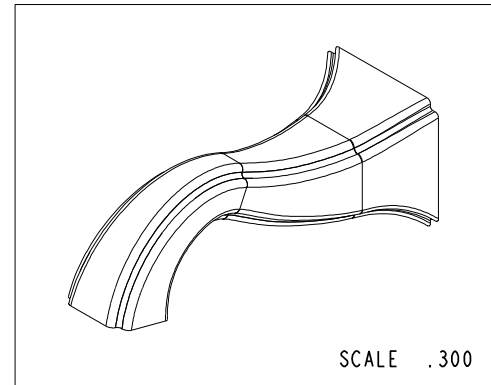
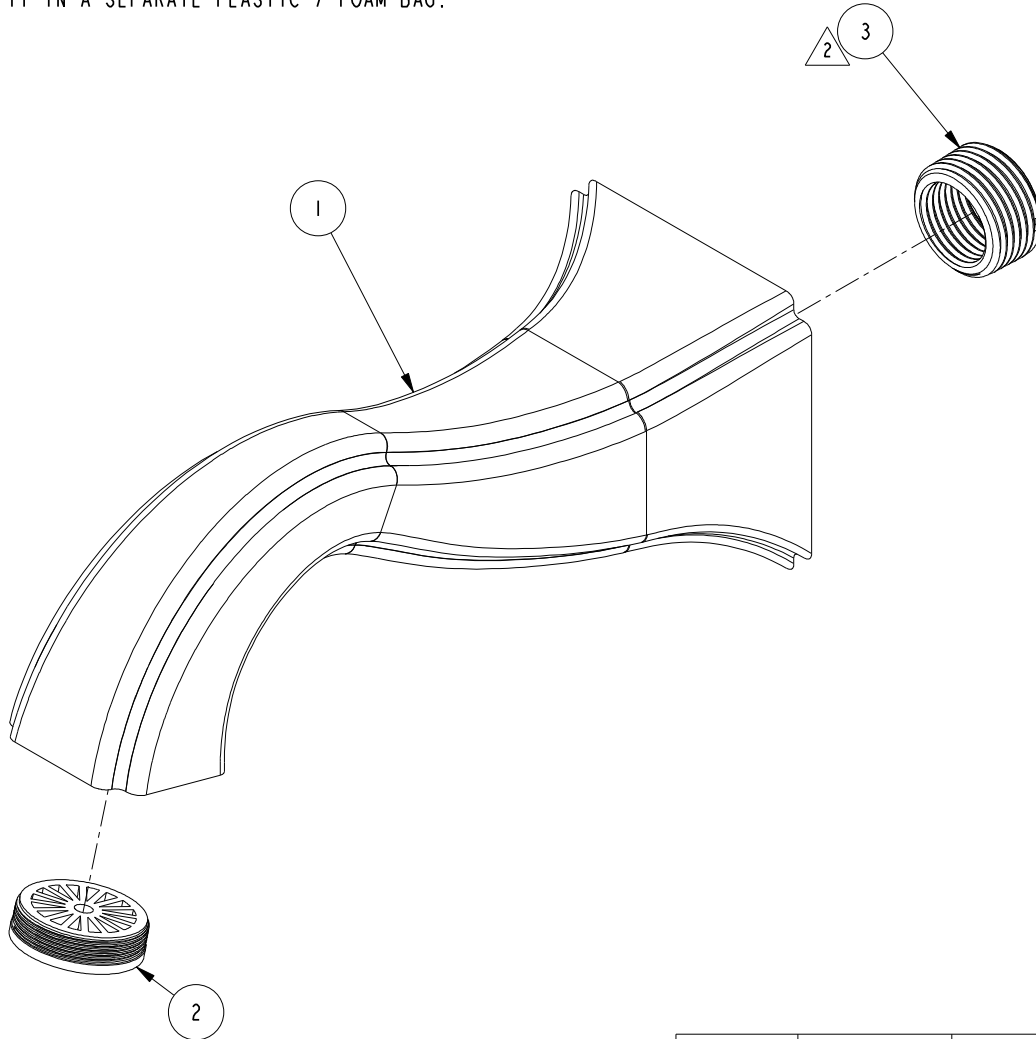


NOTES:

- (N1) 1. TO INSPECT ASSEMBLY, FOLLOW FIRST ARTICLE AND IN PROCESS INSPECTION SHEET.
- (N2) 2. LOOSE PIECE (DO NOT ASSEMBLE TO SPOUT). BAG IT IN A SEPARATE PLASTIC / FOAM BAG.

BILL OF MATERIAL (CURRENT LEVEL)

ITEM	PT/ASSY	DESCRIPTION	TYPE	QTY.
1	80009	WALL TUB SPOUT	PART	1
2	10224	STREAM STRAIGHTENER R/T WHITE	PART	1
3	50464	FACE BUSHING 3/4 X 1/2 NPT	PART	1



ZONE	REV	DESCRIPTION	DATE	APPROVED
-	B	EN-4300ii	01/25/21	R.S.
-	A	EN-3223	12/15/16	J.A
-	-	EO-0367	01/20/05	-

COPYRIGHT 2005 BRASSTECH, INC. THESE DRAWINGS AND THE DESIGNS DEPICTED HEREIN ARE THE PROPRIETARY PROPERTY OF BRASSTECH. ANY USE OR REPRODUCTION IS SUBJECT TO THE EXPRESS APPROVAL OF BRASSTECH. UNAUTHORIZED USE IS STRICTLY PROHIBITED. ALL RIGHTS RESERVED.

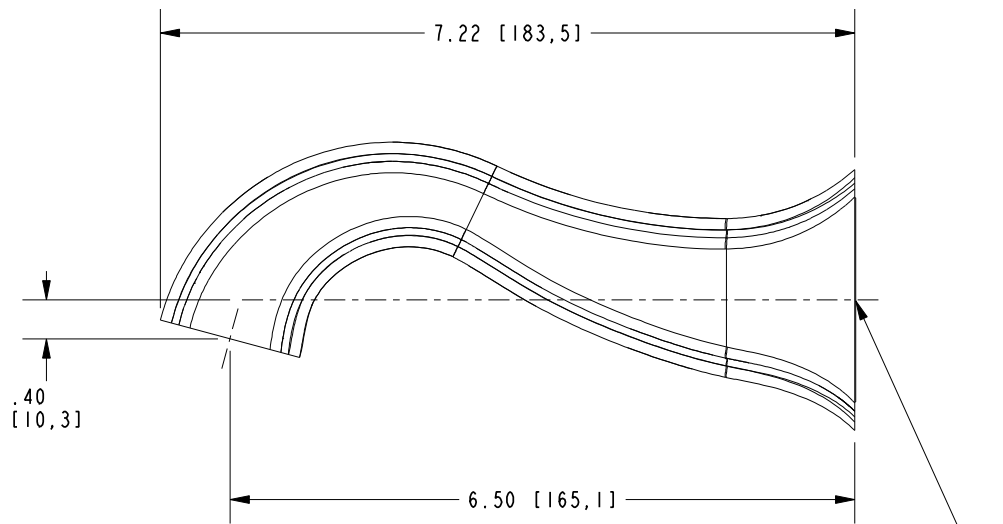
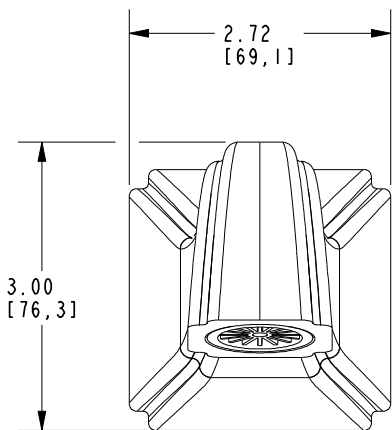
TESTING	ASSEMBLY	PLATING	POLISHING	MACHINING	TOOLING FIXTURE #
-	-	-	-	-	-
-	-	3-2532BP	3-2532BP	-	-
-	-	NEXT ASSY	USED ON	-	-
APPLICATION					
REMOVE ALL BURRS AND SHARP EDGES					

UNITS ARE: INCHES [MM]		
TOLERANCES ARE:		
FRACTIONS	DECIMALS	ANGLES
±1/16"	.X ±.1 [2.5]	±1°
	.XX ±.06 [1.5]	
(X.XXX) DENOTES CRITICAL DIMS.		
ALL THREADS ARE CRITICAL		
DRAWN	AMARISH	12/15/16
CHECKED	RAVINDRA	12/15/16
APPROVED	J.A	12/15/16

BRASSTECH 2001 CARNEGIE AVE. SANTA ANA, CA 92705 (949) 417-5207
INCORPORATED

TUB WALL SPOUT ASM

DWG NO. 8-009	REV B
SCALE .650	REF. -
SHEET 1	OF 2



3/4" NPT INLET
(1/2" NPT BUSHING INCLUDED)

BRASSTECH		2001 CARNEGIE AVE. SANTA ANA, CA 92705 (949) 417-5207	
INCORPORATED			
DWG NO.	8-009	REV	B
SCALE	.500	REF.	-
		SHEET	2 OF 2