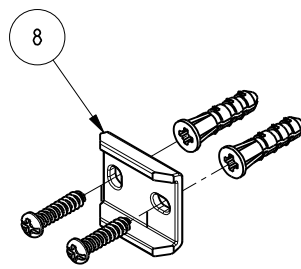
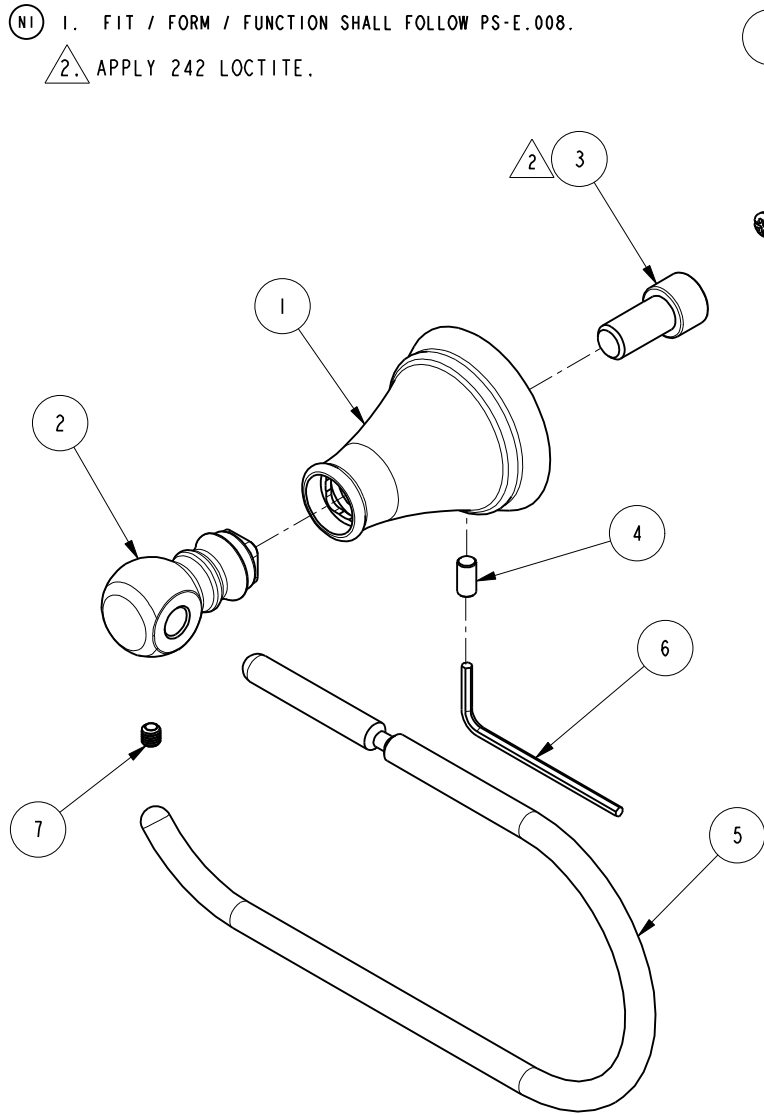


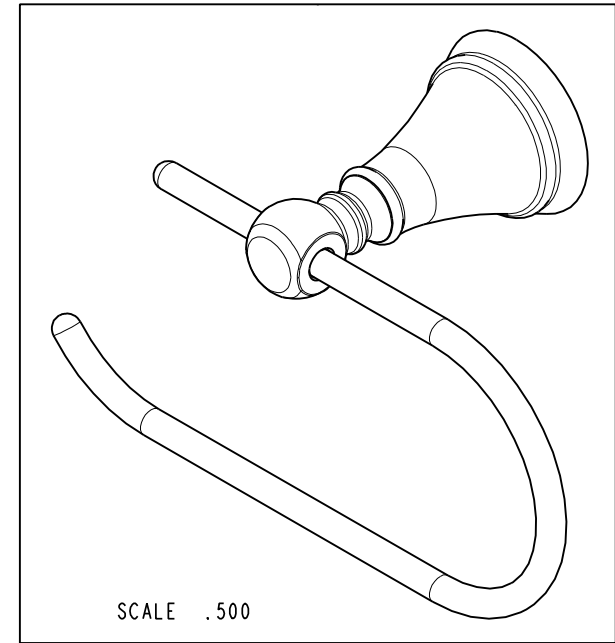
NOTES:

- (N1) 1. FIT / FORM / FUNCTION SHALL FOLLOW PS-E.008.
- 2. APPLY 242 LOCTITE.



BILL OF MATERIAL (CURRENT LEVEL)

ITEM	PT/ASSY	DESCRIPTION	TYPE	QTY.
1	NCIP-031_5	ESCUTCHEON	PART	1
2	CCDZ0008	POST	PART	1
3	CTST4201	SCREW	PART	1
4	92181	SCRW, M5 X 10 SKT HD FLT PT SS	PART	1
5	CCRB0032	RING	PART	1
6	CCOT0002	HEX KEY	PART	1
7	92308	SCRW, M5 X 5 SKT HD CUP PT SS	PART	1
8	I-362	MOUNTING KIT	ASSEMBLY	1



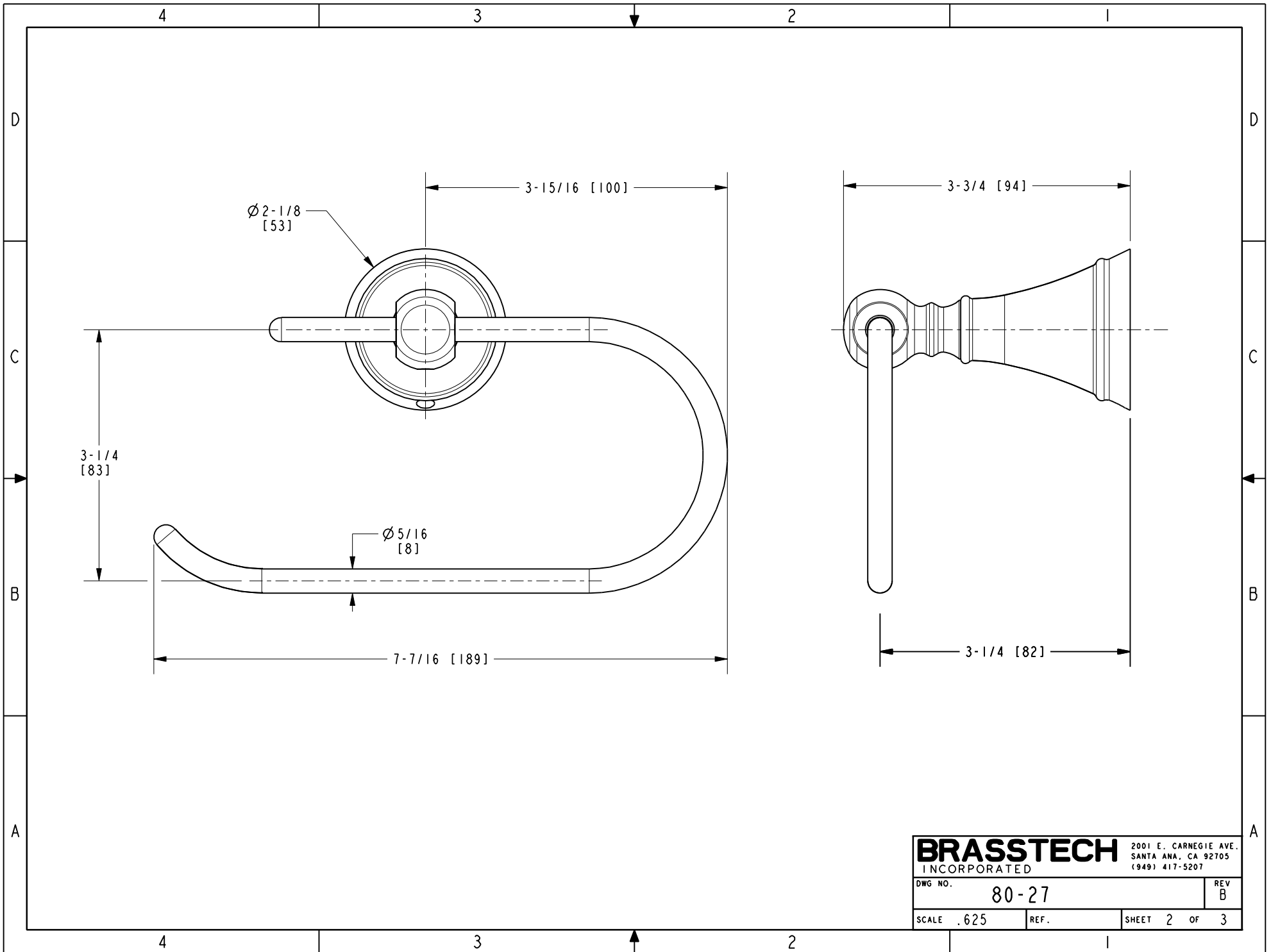
ZONE	REV	DESCRIPTION	DATE	APPROVED
-	B	EN-3463	11/14/17	J.M.
-	A	EN-3179	10/30/16	V.V.
-	-	EN-2741	08/27/14	V.V.

COPYRIGHT 2005 BRASSTECH, INC. THESE DRAWINGS AND THE DESIGNS DEPICTED HEREIN ARE THE PROPRIETARY PROPERTY OF BRASSTECH. ANY USE OR REPRODUCTION IS SUBJECT TO THE EXPRESS APPROVAL OF BRASSTECH. UNAUTHORIZED USE IS STRICTLY PROHIBITED. ALL RIGHTS RESERVED.

TESTING	ASSEMBLY	PLATING	POLISHING	MACHINING	TOOLING	FIXTURE #	APPLICATION
-	-	-	-	-	-	-	REMOVE ALL BURRS AND SHARP EDGES

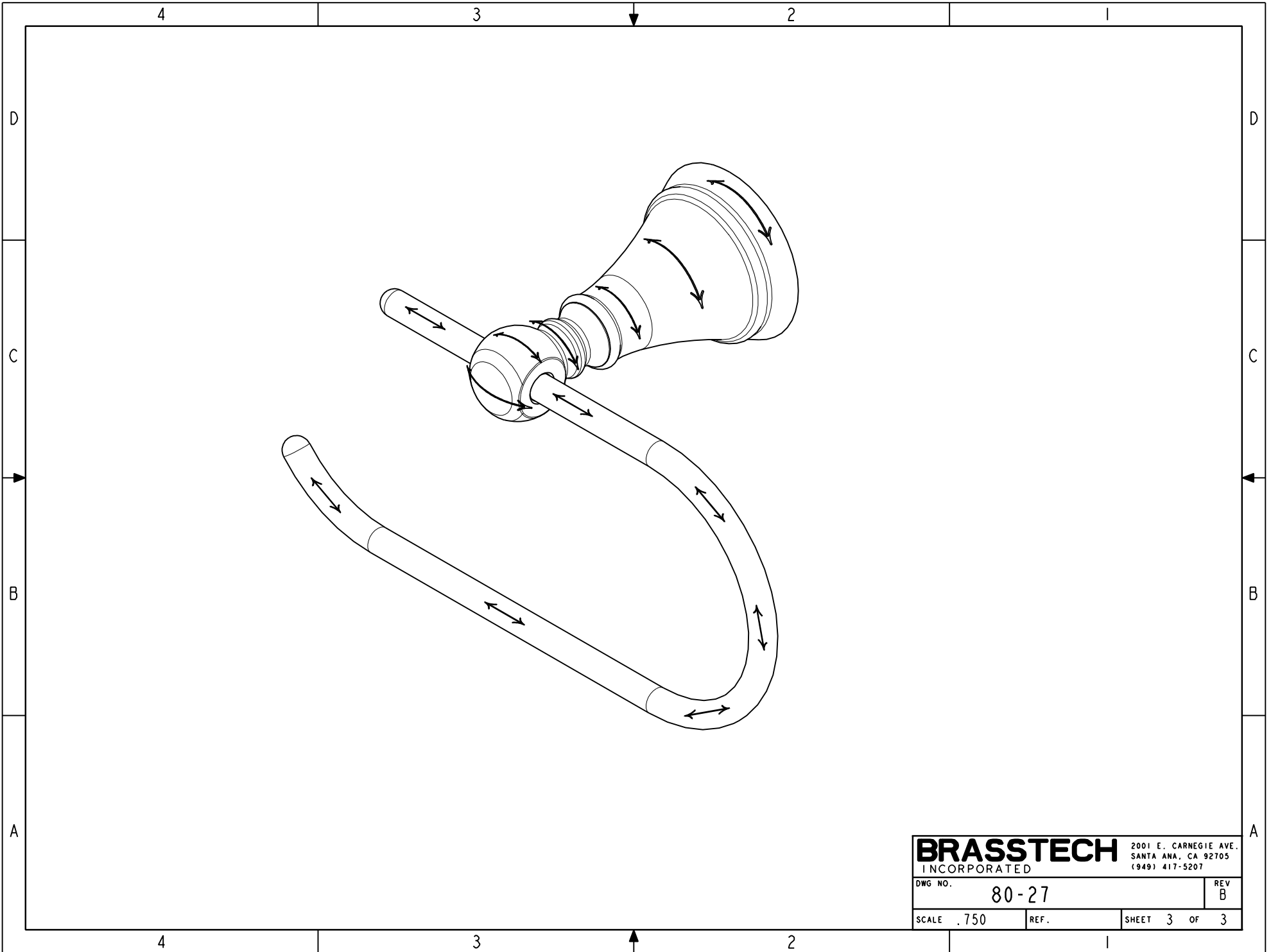
UNITS ARE: INCHES [MM]
 TOLERANCES ARE:
 FRACTIONS DECIMALS ANGLES
 $\pm 1/16"$.X $\pm .1$ [2.5] $\pm 1^\circ$
 .XX $\pm .06$ [1.5]
 (X.XXX) DENOTES CRITICAL DIMS.
 ALL THREADS ARE CRITICAL
 DRAWN JINSON 11/14/17
 CHECKED C.G. 11/14/17
 APPROVED J.M. 11/14/17

BRASSTECH 2001 CARNEGIE AVE. SANTA ANA, CA 92705 (949) 417-5207
 INCORPORATED
HANGING TOILET TISSUE HOLDER
 DWG NO. **80-27** REV B
 SCALE .500 REF. SHEET 1 OF 3



BRASSTECH 2001 E. CARNEGIE AVE.
 INCORPORATED SANTA ANA, CA 92705
 (949) 417-5207

DWG NO.	80-27	REV	B
SCALE	.625	REF.	SHEET 2 OF 3



BRASSTECH		2001 E. CARNEGIE AVE.	
INCORPORATED		SANTA ANA, CA 92705	
		(949) 417-5207	
DWG NO.	80-27	REV	B
SCALE .750	REF.	SHEET 3	OF 3