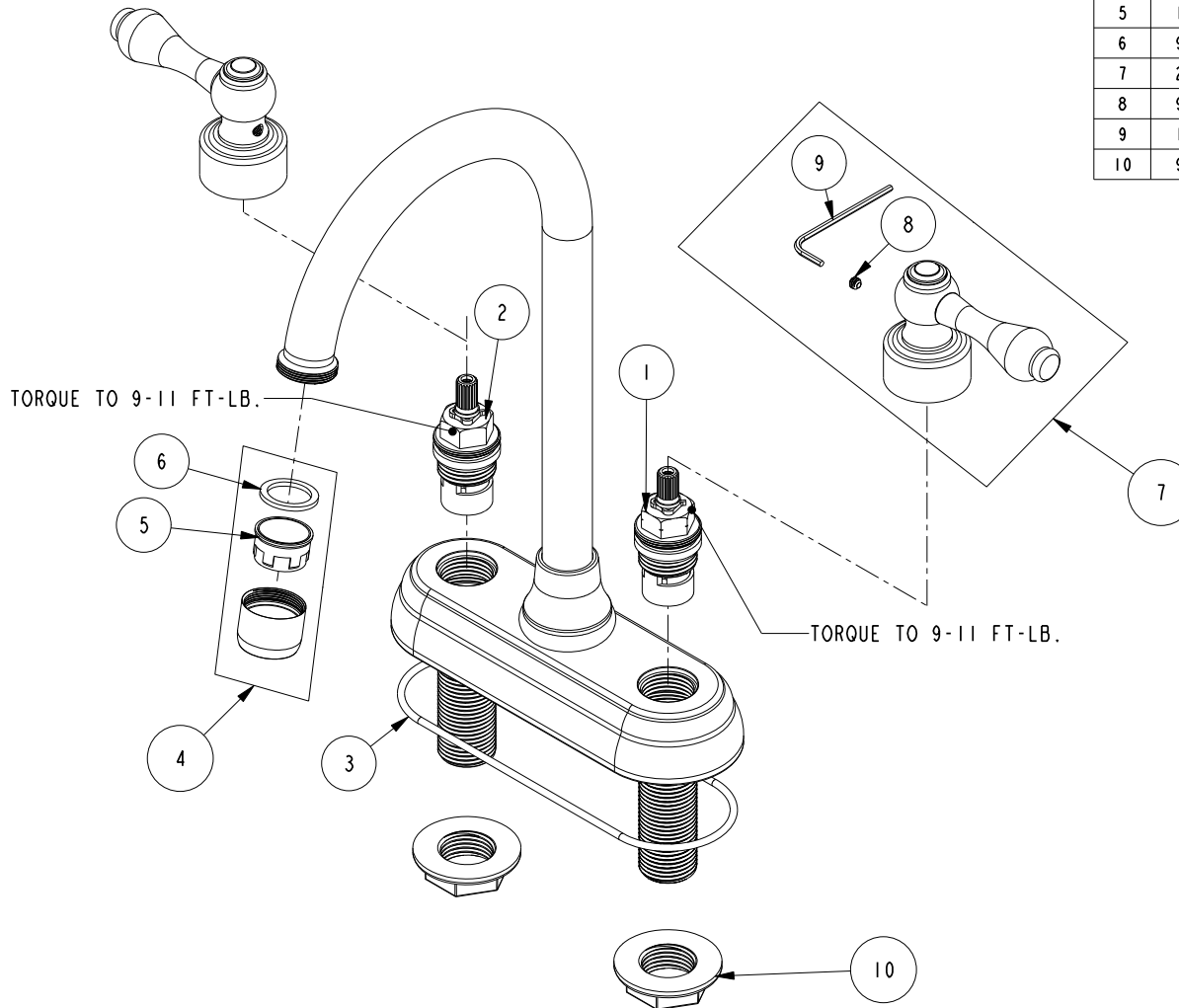


REPLACEMENT PARTS

ITEM	PT/ASSY	SPECIFY FINISH	DESCRIPTION
1	1-005		C/S VALVE CARTRIDGE - COLD
2	1-006		C/S VALVE CARTRIDGE - HOT
3	91605		O-RING, #2-156, MCMASTER-CARR #9452K319
4	2-634	YES	AERATOR ASM - BAR SPOUT
5	11528		AERATOR STD INSERT
6	91040		WSHR, .590 ID X .825 OD X .072 THK, FLT, RUBBER NSF 61
7	2-130	YES	C/S HANDLE - BRASS
8	92000		SCREW 8 - 32 X 1/8 SS
9	10192		HEX KEY TOOL, #8 5/64
10	91061		FLANGE NUT 1/2-14 NPSM



**BAR FAUCET
808**

REV D EN-4741 11/29/23 APPROVED RS

NEWPORT BRASS.

t: 949.417.5207 | www.newportbrass.com