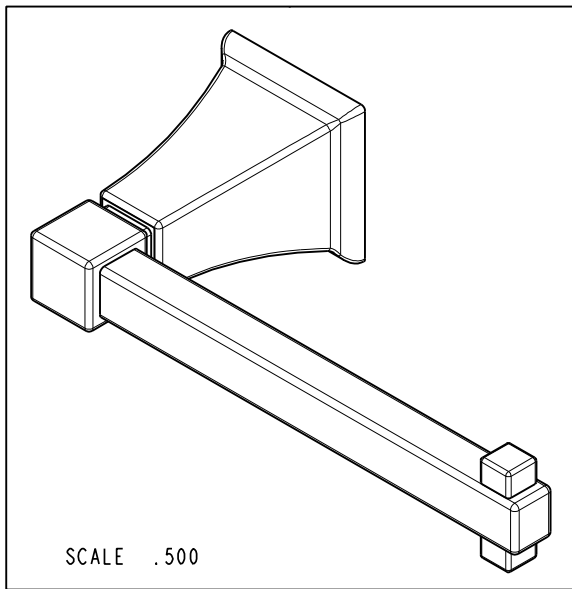


BILL OF MATERIAL (CURRENT LEVEL)

ITEM	PT/ASSY	DESCRIPTION	TYPE	QTY.
1	CCDB0155	ESCUTCHEON	PART	1
2	CCDB0158	BASE	PART	1
3	92461	SCRW, M6 X 1 X 6 SKT HD CONE PT SS	PART	1
4	CTST0116	SCREW	PART	1
5	92181	SCRW, M5 X 10 SKT HD FLT PT SS	PART	1
6	CCDB0160	TISSUE BAR	PART	1
7	CCDB0161	TIP	PART	1
8	CCDB0162	TIP	PART	1
9	CTST0050	SCREW	PART	1
10	CCQT0002	HEX KEY	PART	1
11	1-362	MOUNTING KIT	ASSEMBLY	1



NOTES:

- 1. FIT / FORM / FUNCTION SHALL FOLLOW PS-E.008.
- 2. APPLY 242 LOCTITE.

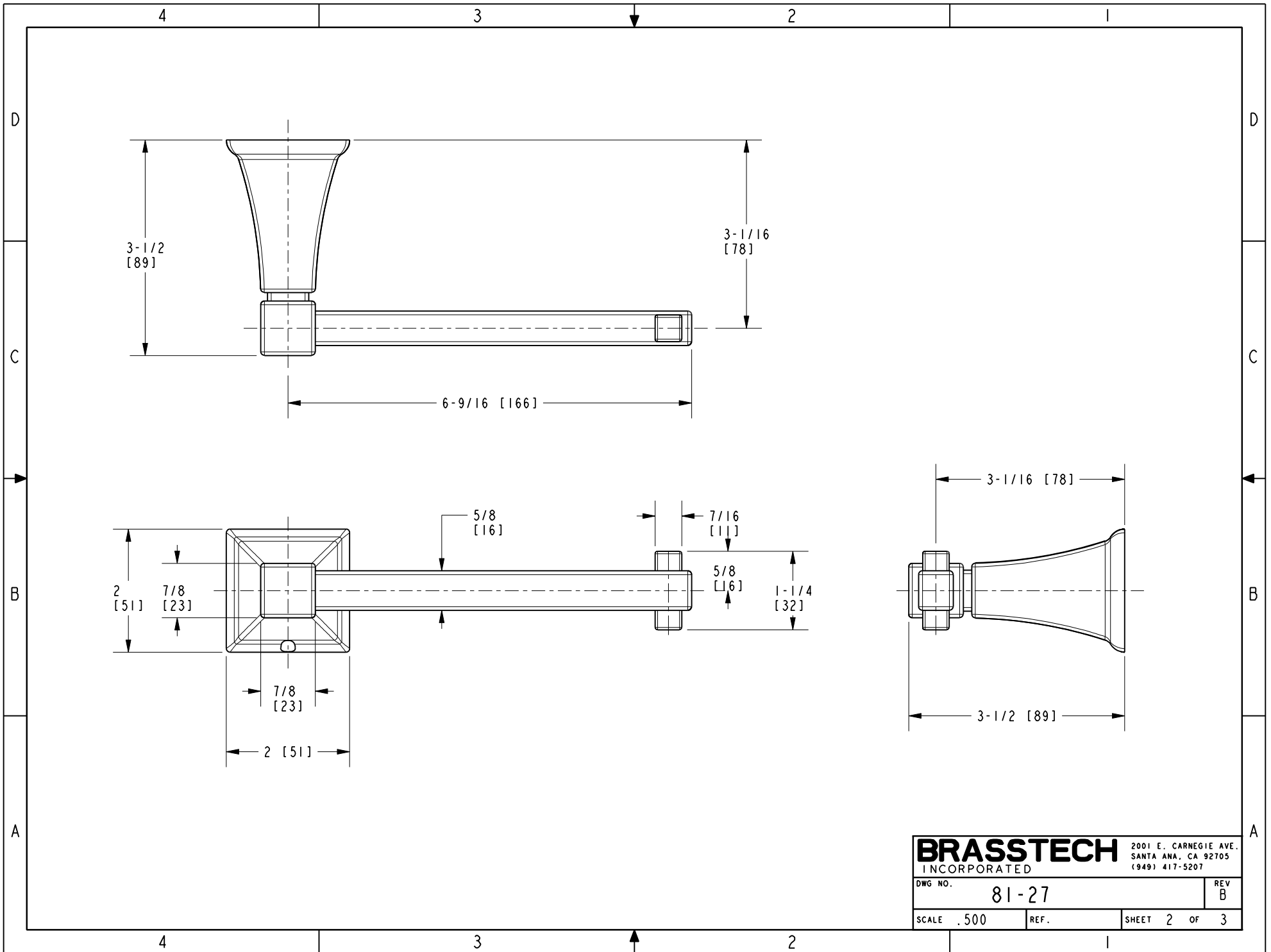
ZONE	REV	DESCRIPTION	DATE	APPROVED
-	B	EN-3463	11/15/17	J.M.
-	A	EN-3179	10/30/16	V.V.
-	-	EN-2741	08/27/14	V.V.

COPYRIGHT 2005 BRASSTECH, INC. THESE DRAWINGS AND THE DESIGNS DEPICTED HEREIN ARE THE PROPRIETARY PROPERTY OF BRASSTECH. ANY USE OR REPRODUCTION IS SUBJECT TO THE EXPRESS APPROVAL OF BRASSTECH. UNAUTHORIZED USE IS STRICTLY PROHIBITED. ALL RIGHTS RESERVED.

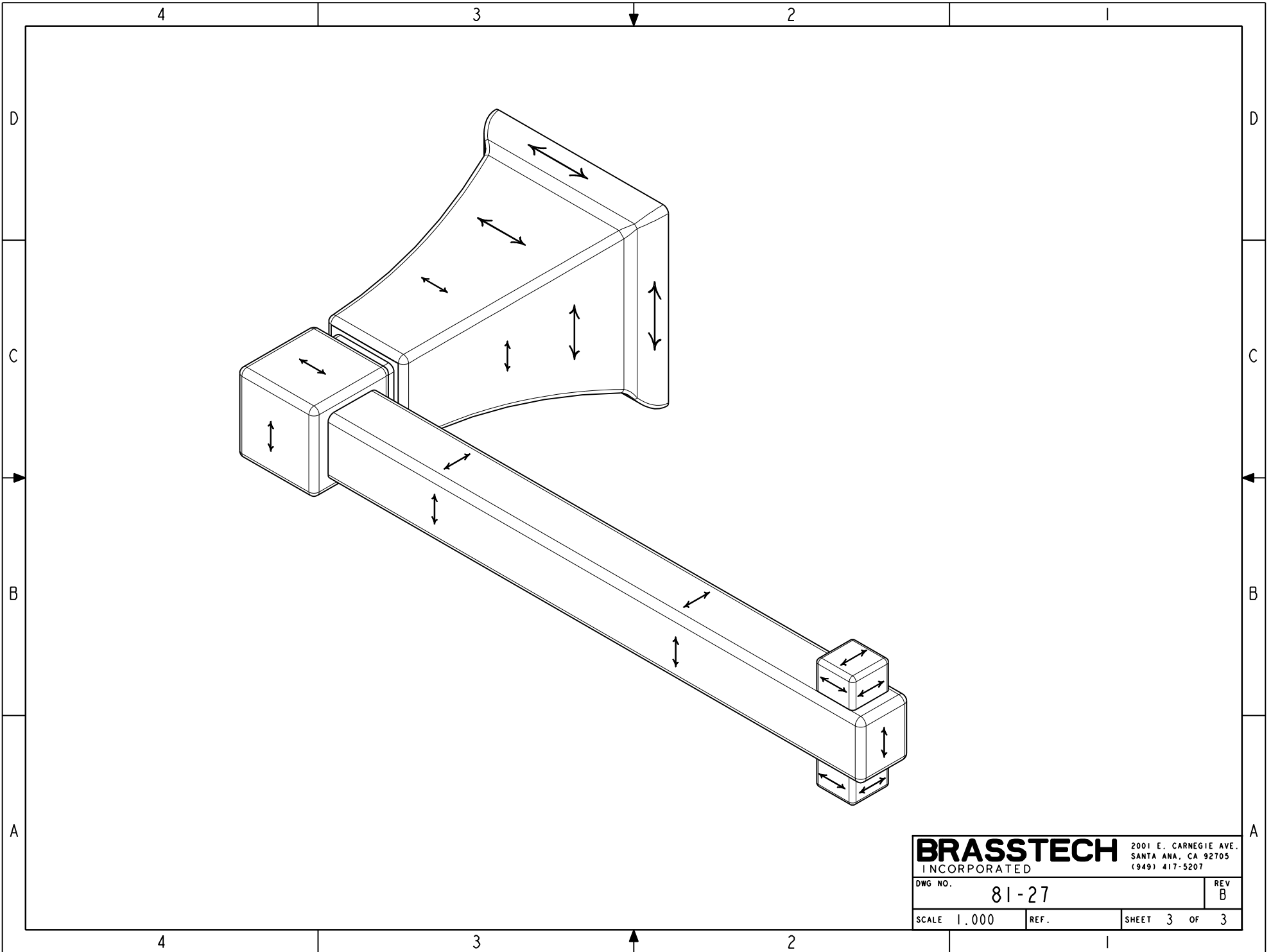
TESTING	ASSEMBLY	PLATING	POLISHING	MACHINING	TOOLING	FIXTURE #	APPLICATION
-	-	-	-	-	-	-	REMOVE ALL BURRS AND SHARP EDGES

UNITS ARE: INCHES [MM]
 TOLERANCES ARE:
 FRACTIONS DECIMALS ANGLES
 $\pm 1/16"$.X $\pm .1$ [2.5] $\pm 1^\circ$
 .XX $\pm .06$ [1.5]
 (X.XXX) DENOTES CRITICAL DIMS.
 ALL THREADS ARE CRITICAL
 DRAWN JINSON 11/15/17
 CHECKED C.G. 11/15/17
 APPROVED J.M. 11/15/17

BRASSTECH 2001 CARNEGIE AVE. SANTA ANA, CA 92705 (949) 417-5207
 INCORPORATED
HANGING TOILET TISSUE HOLDER
 DWG NO. **81-27** REV B
 SCALE .500 REF. SHEET 1 OF 3



BRASSTECH		2001 E. CARNEGIE AVE.	
INCORPORATED		SANTA ANA, CA 92705	
DWG NO. 81-27		REV B	
SCALE .500	REF.	SHEET 2 OF 3	



BRASSTECH		2001 E. CARNEGIE AVE.	
INCORPORATED		SANTA ANA, CA 92705	
DWG NO. 81-27		REV B	
SCALE 1.000	REF.	SHEET 3	OF 3