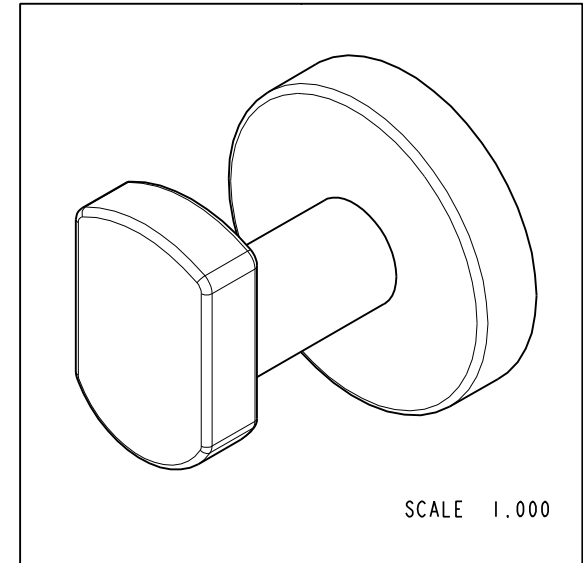
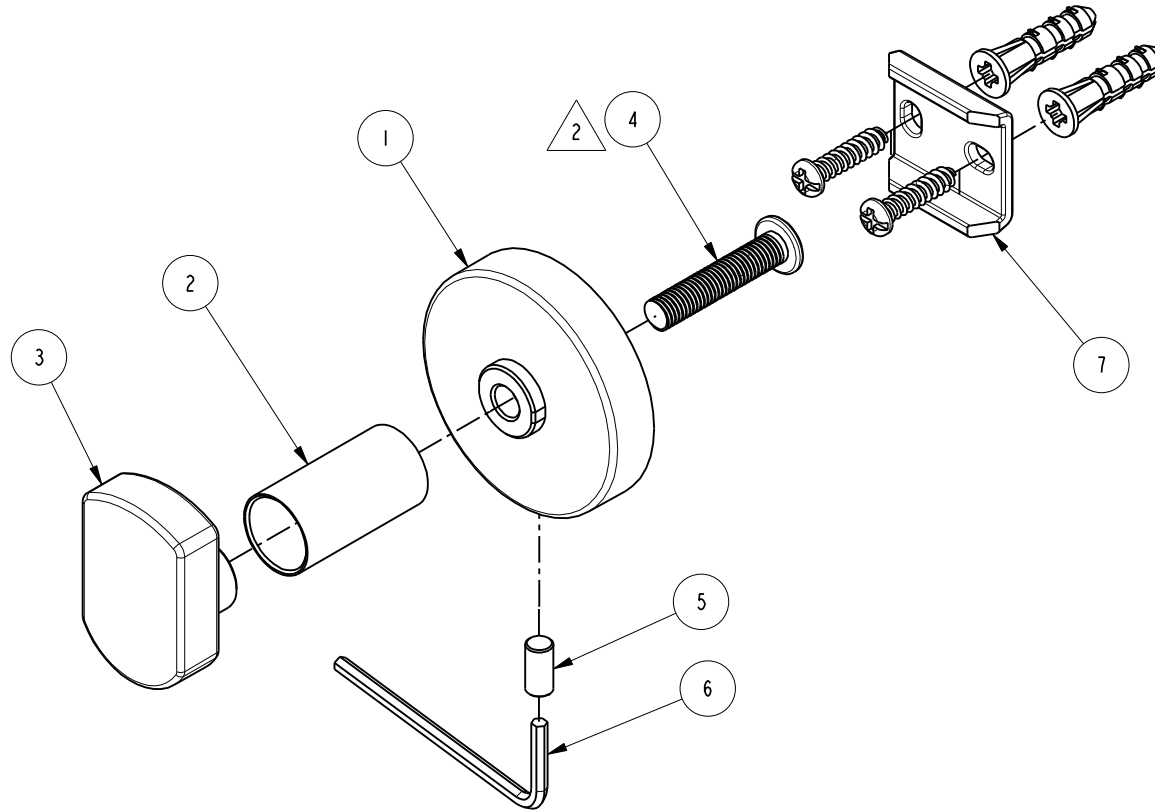


NOTES:

- (N1) 1. FIT / FORM / FUNCTION SHALL FOLLOW PS-E.008.
- △ 2. APPLY 242 LOCTITE.

BILL OF MATERIAL (CURRENT LEVEL)

ITEM	PT/ASSY	DESCRIPTION	TYPE	QTY.
1	CCCZ0020	ESCUTCHEON	PART	1
2	CCDB0134	SLEEVE	PART	1
3	CCEZ0030	HOLDER	PART	1
4	CTST0046	SCREW	PART	1
5	92181	SCRW, M5 X 10 SKT HD FLT PT SS	PART	1
6	CCQT0002	HEX KEY	PART	1
7	I-362	MOUNTING KIT	ASSEMBLY	1



TESTING	-	-	-	-
ASSEMBLY	-	-	-	-
PLATING	-	-	-	-
POLISHING	-	NEXT ASSY	USED ON	
MACHINING	-	APPLICATION		
TOOLING FIXTURE #		REMOVE ALL BURRS AND SHARP EDGES		

UNITS ARE: INCHES [MM]
 TOLERANCES ARE:
 FRACTIONS DECIMALS ANGLES
 $\pm 1/16"$.X $\pm .1$ [2.5] $\pm 1^\circ$
 .XX $\pm .06$ [1.5]
 (X.XXX) DENOTES CRITICAL DIMS.
 ALL THREADS ARE CRITICAL
 DRAWN JINSON 11/14/17
 CHECKED C.G. 11/14/17
 APPROVED J.M. 11/14/17

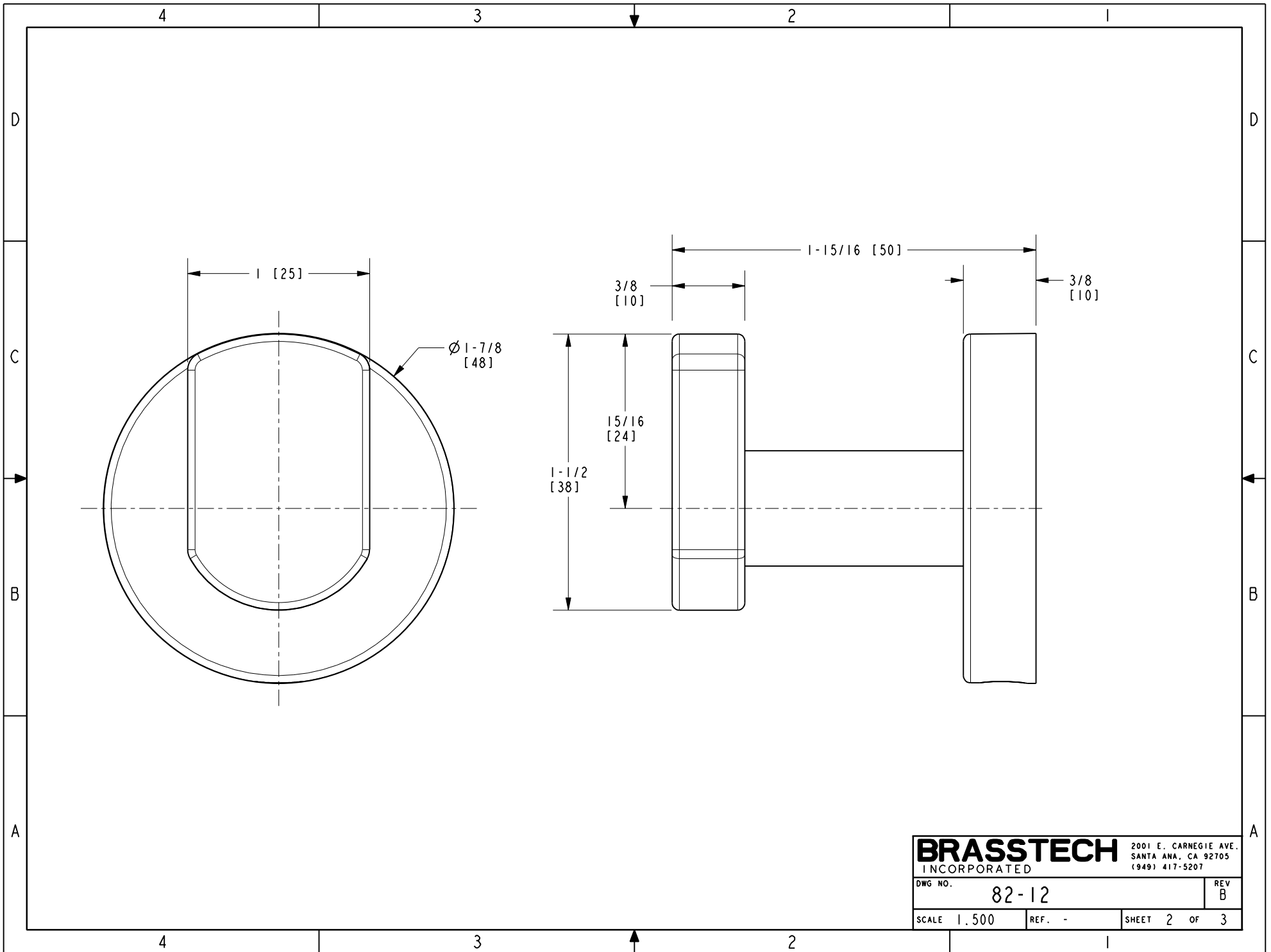
BRASSTECH 2001 CARNEGIE AVE.
 INCORPORATED SANTA ANA, CA 92705
 (949) 417-5207

SINGLE ROBE HOOK

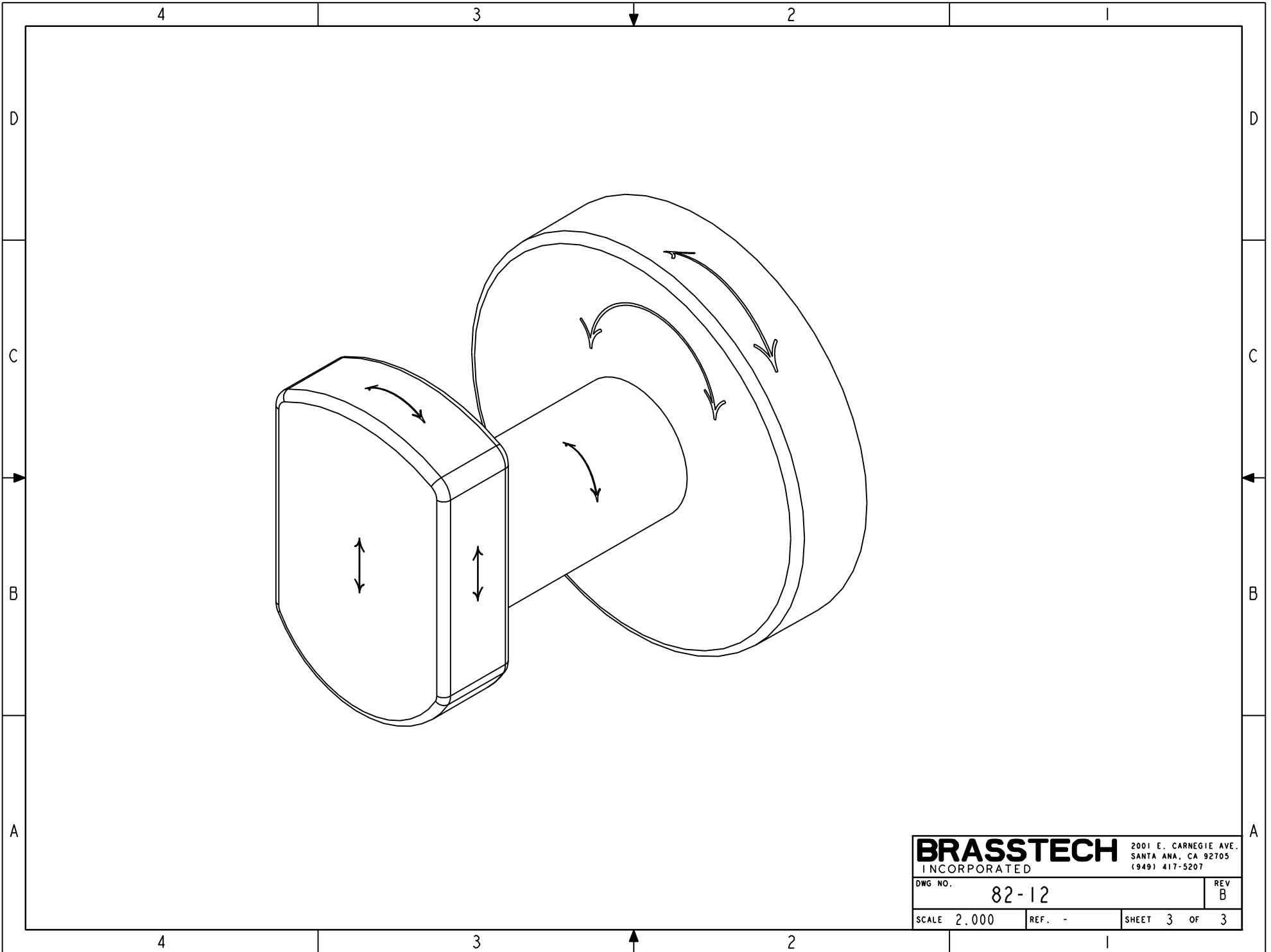
DWG NO. **82-12** REV B

SCALE .750 REF. SHEET | OF 3

-	B	EN-3463	11/14/17	J.M.	COPYRIGHT 2005 BRASSTECH, INC. THESE DRAWINGS AND THE DESIGNS DEPICTED HEREIN ARE THE PROPRIETARY PROPERTY OF BRASSTECH. ANY USE OR REPRODUCTION IS SUBJECT TO THE EXPRESS APPROVAL OF BRASSTECH. UNAUTHORIZED USE IS STRICTLY PROHIBITED. ALL RIGHTS RESERVED.
-	A	EN-3179	10/30/16	V.V.	
-	-	EN-2741	08/27/14	-	
ZONE	REV	DESCRIPTION	DATE	APPROVED	



BRASSTECH		2001 E. CARNEGIE AVE.	
INCORPORATED		SANTA ANA, CA 92705	
		(949) 417-5207	
DWG NO.	82-12	REV	B
SCALE 1.500	REF. -	SHEET 2	OF 3



BRASSTECH		2001 E. CARNEGIE AVE.	
INCORPORATED		SANTA ANA, CA 92705	
DWG NO. 82-12		REV B	
SCALE 2.000	REF. -	SHEET 3 OF 3	