

NOTES:

1. TO INSPECT ASSEMBLY, FOLLOW FIRST ARTICLE AND IN PROCESS INSPECTION SHEET.

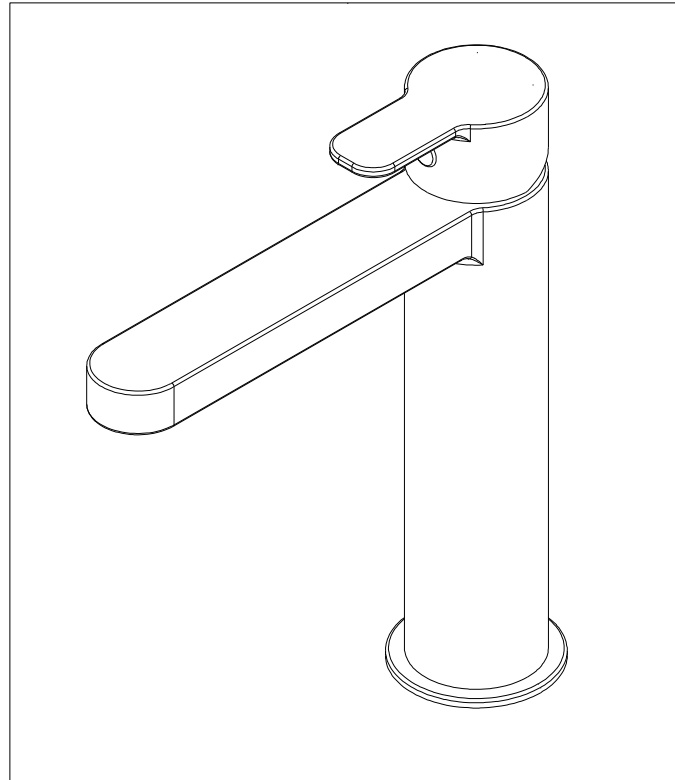
2. TORQUE TO 7.5-8.5 LB-FT.

3. APPLY THIN COAT OF SILICON GREASE FOR ALL O-RINGS BEFORE INSTALLATION.

4. APPLY LOCTITE 242, IF SCREW DOES NOT HAVE NYLON PATCH.

5. APPLY LOCTITE 680.

6. TORQUE 15-20 IN-LB.



BILL OF MATERIAL (CURRENT LEVEL)

ITEM	PT/ASSY	DESCRIPTION	TYPE	QTY.
1	CTYN0246	BODY	PART	1
2	I-435	CARTRIDGE	ASSEMBLY	1
3	CTCB0416	RETAINER	PART	1
4	CTCB0628	COVER	PART	1
5	CTHZ0595	HANDLE	PART	1
6	CTST0084-XX2	SCREW	PART	1
7	CTCP0072	CAP	PART	1
8	ATBX0087	AERATOR	PART	1
9	CTDZ0122	BASE SEAT	PART	1
10	CTRR0163	O-RING	PART	1
11	CTST0013	SCREW	PART	1
12	CTNB0063	NUT	PART	1
13	CTWT0095	PLATE	PART	1
14	ATBP0403	HOSE	ASSEMBLY	2
15	CTCP0440	COVER	PART	1

TESTING	-	-	-
ASSEMBLY	-	-	-
PLATING	-	-	-
POLISHING	-	NEXT ASSY	USED ON
MACHINING	-	APPLICATION	
TOOLING FIXTURE #	REMOVE ALL BURRS AND SHARP EDGES		

UNITS ARE: INCHES [MM]
TOLERANCES ARE:
FRACTIONS DECIMALS ANGLES
±1/16" .X ±.1 [2.5] ±1°
.XX ±.06 [1.5]

(X.XXX) DENOTES CRITICAL DIMS.
ALL THREADS ARE CRITICAL

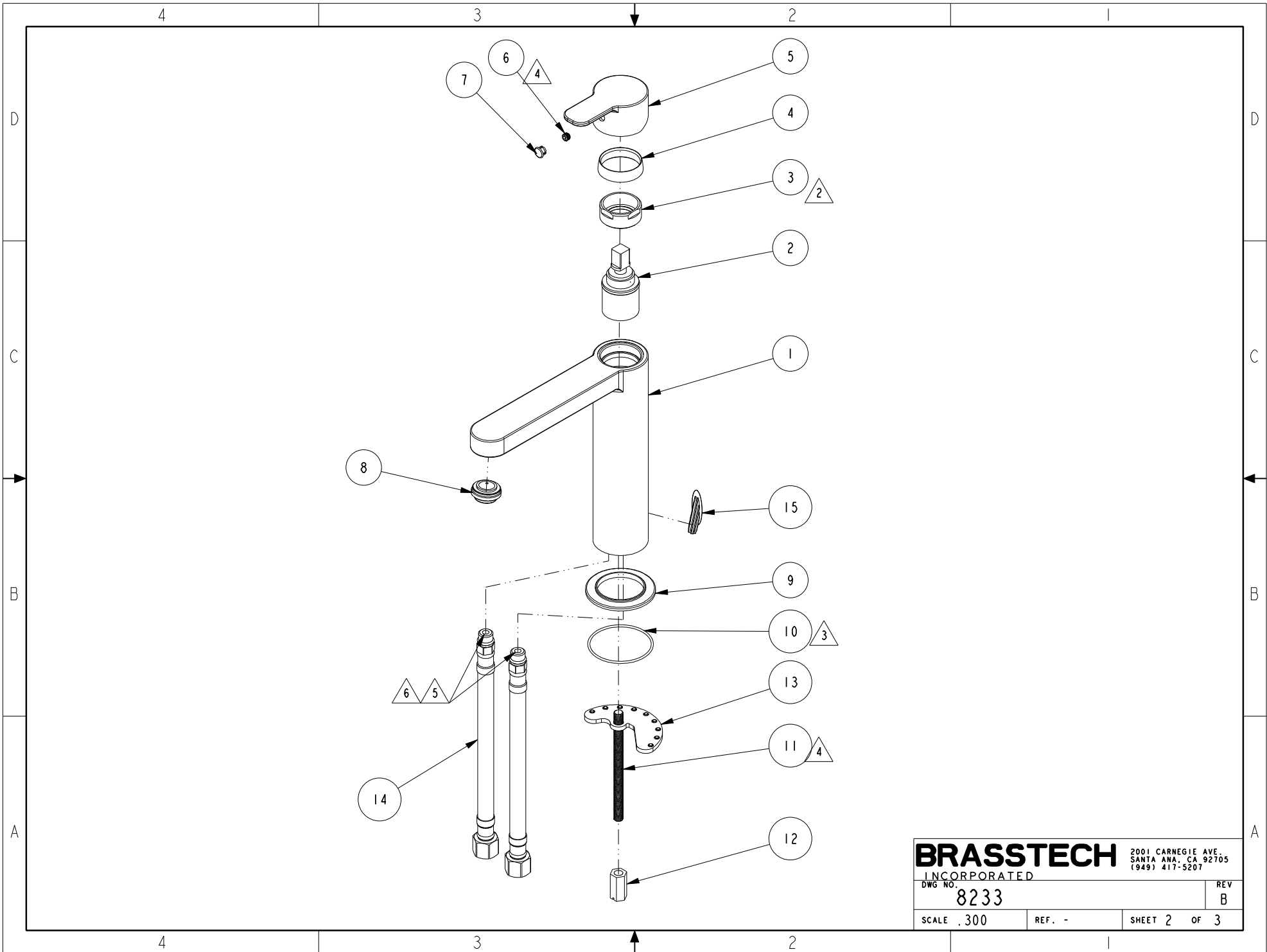
DRAWN	AMARISH	04/26/17
CHECKED	RAVINDRA	04/26/17
APPROVED	J.A	04/26/17

BRASSTECH 2001 CARNEGIE AVE.
INCORPORATED SANTA ANA, CA 92705
(949) 417-5207

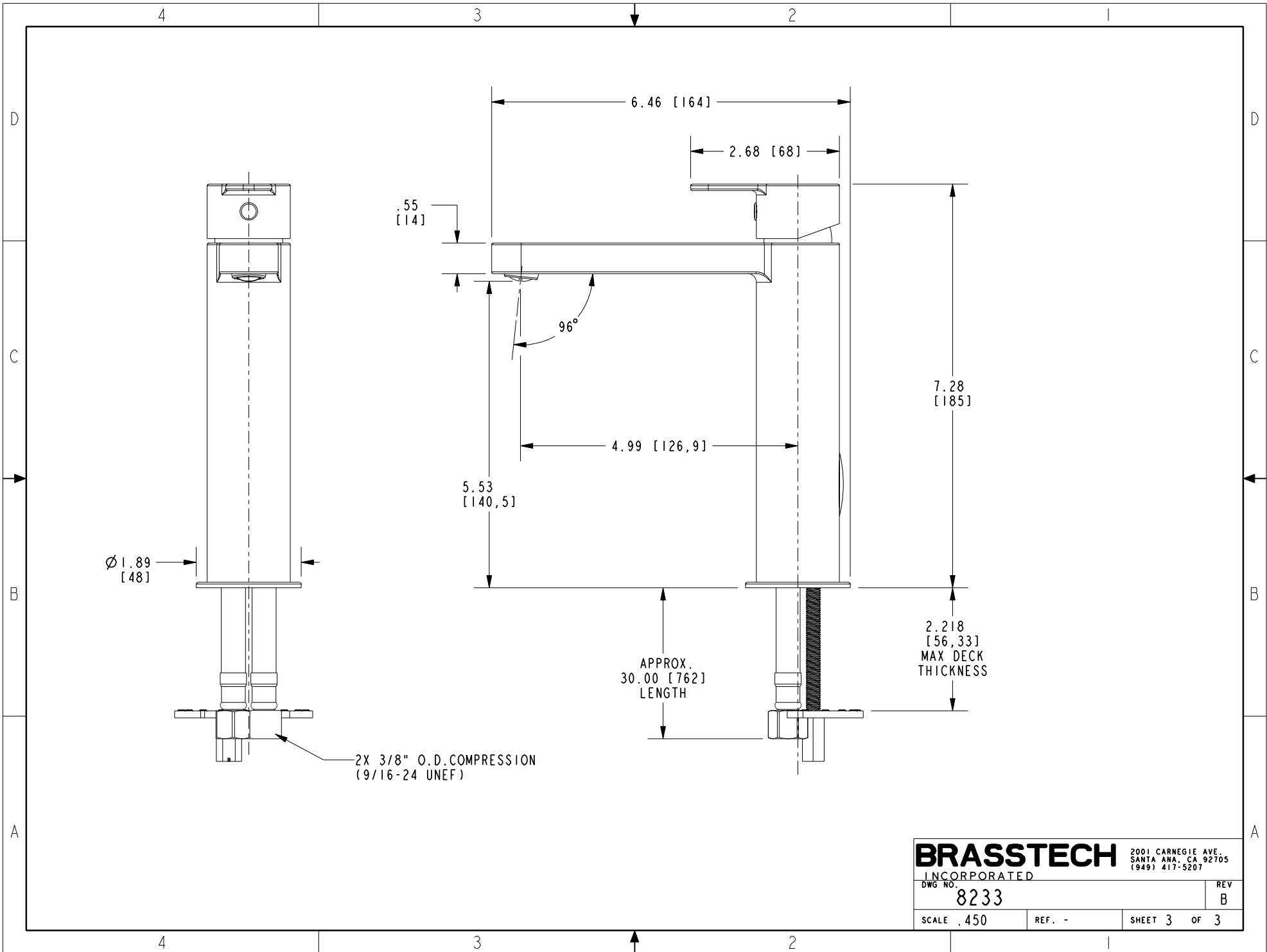
SINGLE HOLE LAVATORY FAUCET

DWG NO.	8233	REV	B
SCALE	.500	REF.	-
SHEET	1	OF	3

-	B	EN-4300m	02/16/21	R.S.	COPYRIGHT 2005 BRASSTECH, INC. THESE DRAWINGS AND THE DESIGNS DEPICTED HEREIN ARE THE PROPRIETARY PROPERTY OF BRASSTECH. ANY USE OR REPRODUCTION IS SUBJECT TO THE EXPRESS APPROVAL OF BRASSTECH. UNAUTHORIZED USE IS STRICTLY PROHIBITED. ALL RIGHTS RESERVED.
-	A	EN-3891	06/18/19	V.V.	
-	-	EN-3304	04/26/17	J.A	
ZONE	REV	DESCRIPTION	DATE	APPROVED	



BRASSTECH		2001 CARNEGIE AVE. SANTA ANA, CA 92705 (949) 417-5207	
INCORPORATED			
DWG NO.	8233	REV	B
SCALE	.300	REF.	-
		SHEET	2 OF 3



BRASSTECH		2001 CARNEGIE AVE. SANTA ANA, CA 92705 (949) 417-5207	
INCORPORATED			
DWG NO.	8233	REV	B
SCALE	.450	REF.	-
		SHEET	3 OF 3