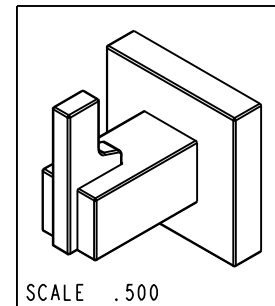
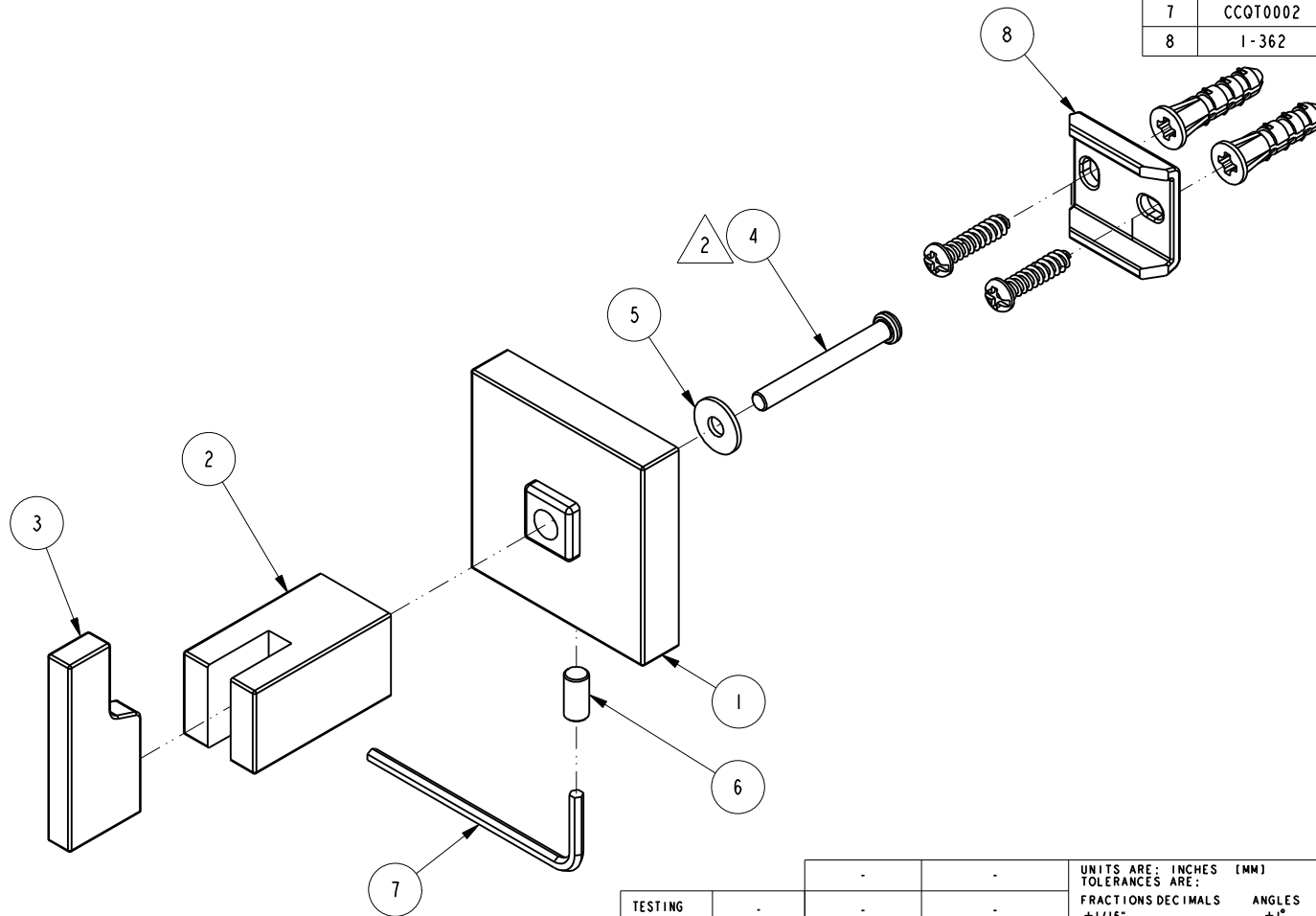


NOTES:

- (N1) 1. FIT / FORM / FUNCTION SHALL FOLLOW PS-E.008.
- 2. APPLY 242 LOCTITE.

BILL OF MATERIAL (CURRENT LEVEL)

ITEM	PT/ASSY	DESCRIPTION	TYPE	QTY.
1	CCDB0141	ESCUTCHEON	PART	1
2	CCDB0145	POST	PART	1
3	CCEB0033	SPOKE	PART	1
4	CTST0017	SCREW	PART	1
5	CTWT0007	WASHER	PART	1
6	92181	SCRW. M5 X 10 SKT HD FLT PT SS	PART	1
7	CCQT0002	HEX KEY	PART	1
8	1-362	MOUNTING KIT	ASSEMBLY	1



ZONE	REV	DESCRIPTION	DATE	APPROVED
-	C	EN-3463	11/14/17	J.M.
-	B	EN-3291	03/20/17	V.V.
-	A	EN-3179	10/30/16	V.V.
-	-	EN-2741	08/27/14	V.V.

COPYRIGHT 2005 BRASSTECH, INC. THESE DRAWINGS AND THE DESIGNS DEPICTED HEREIN ARE THE PROPRIETARY PROPERTY OF BRASSTECH. ANY USE OR REPRODUCTION IS SUBJECT TO THE EXPRESS APPROVAL OF BRASSTECH. UNAUTHORIZED USE IS STRICTLY PROHIBITED. ALL RIGHTS RESERVED.

TESTING	ASSEMBLY	PLATING	POLISHING	MACHINING	TOOLING	FIXTURE #	APPLICATION
-	-	-	-	-	-	-	REMOVE ALL BURRS AND SHARP EDGES

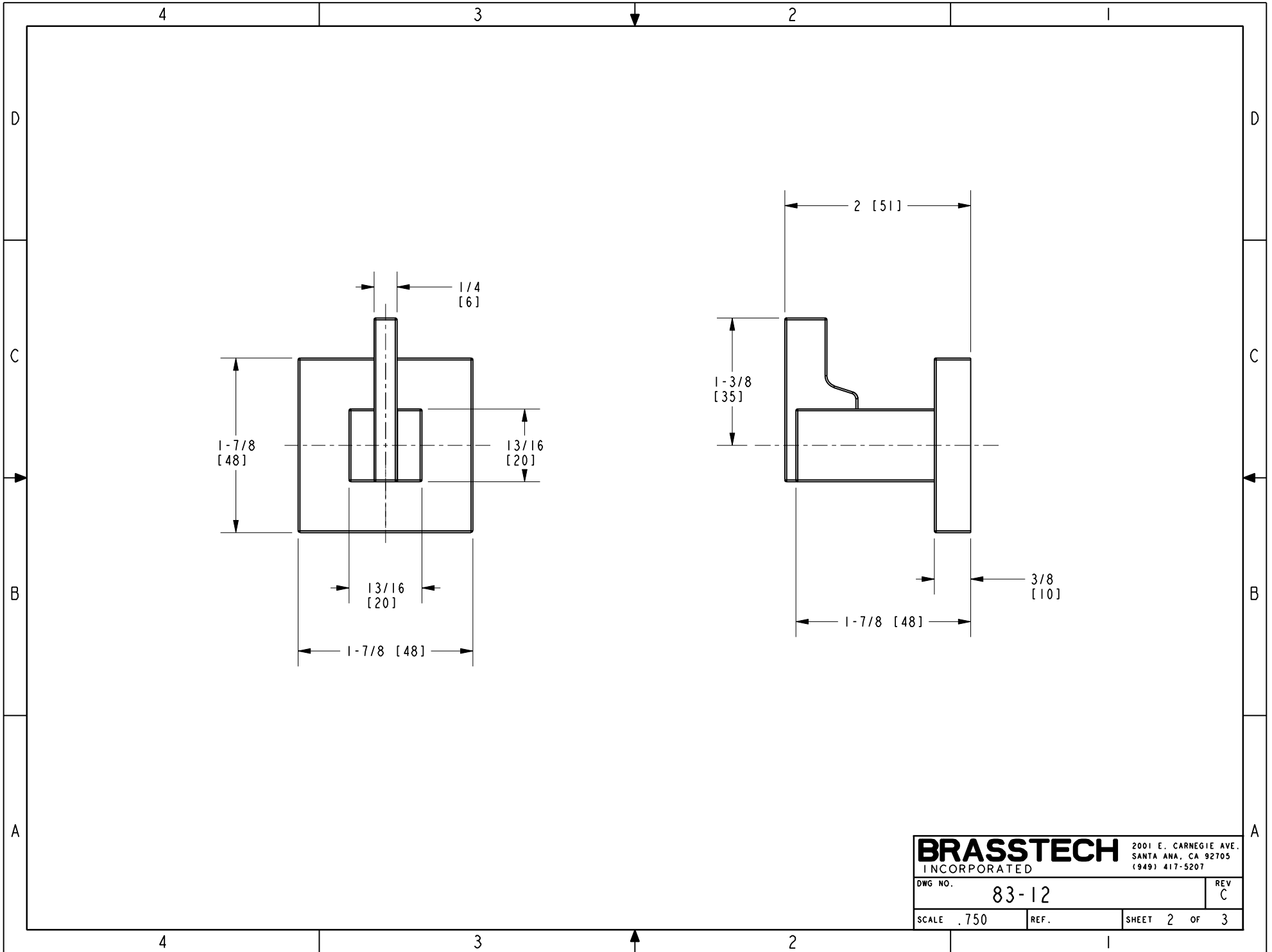
UNITS ARE:	TOLERANCES ARE:
INCHES [MM]	FRACTIONS DECIMALS ANGLES
	$\pm 1/16"$ .X $\pm .1$ [2.5] $\pm 1^\circ$
	.XX $\pm .06$ [1.5]
(X.XXX) DENOTES CRITICAL DIMS. ALL THREADS ARE CRITICAL	
DRAWN	JINSON 11/14/17
CHECKED	C.G. 11/14/17
APPROVED	J.M. 11/14/17

**BRASSTECH** 2001 CARNEGIE AVE. SANTA ANA, CA 92705 (949) 417-5207  
INCORPORATED

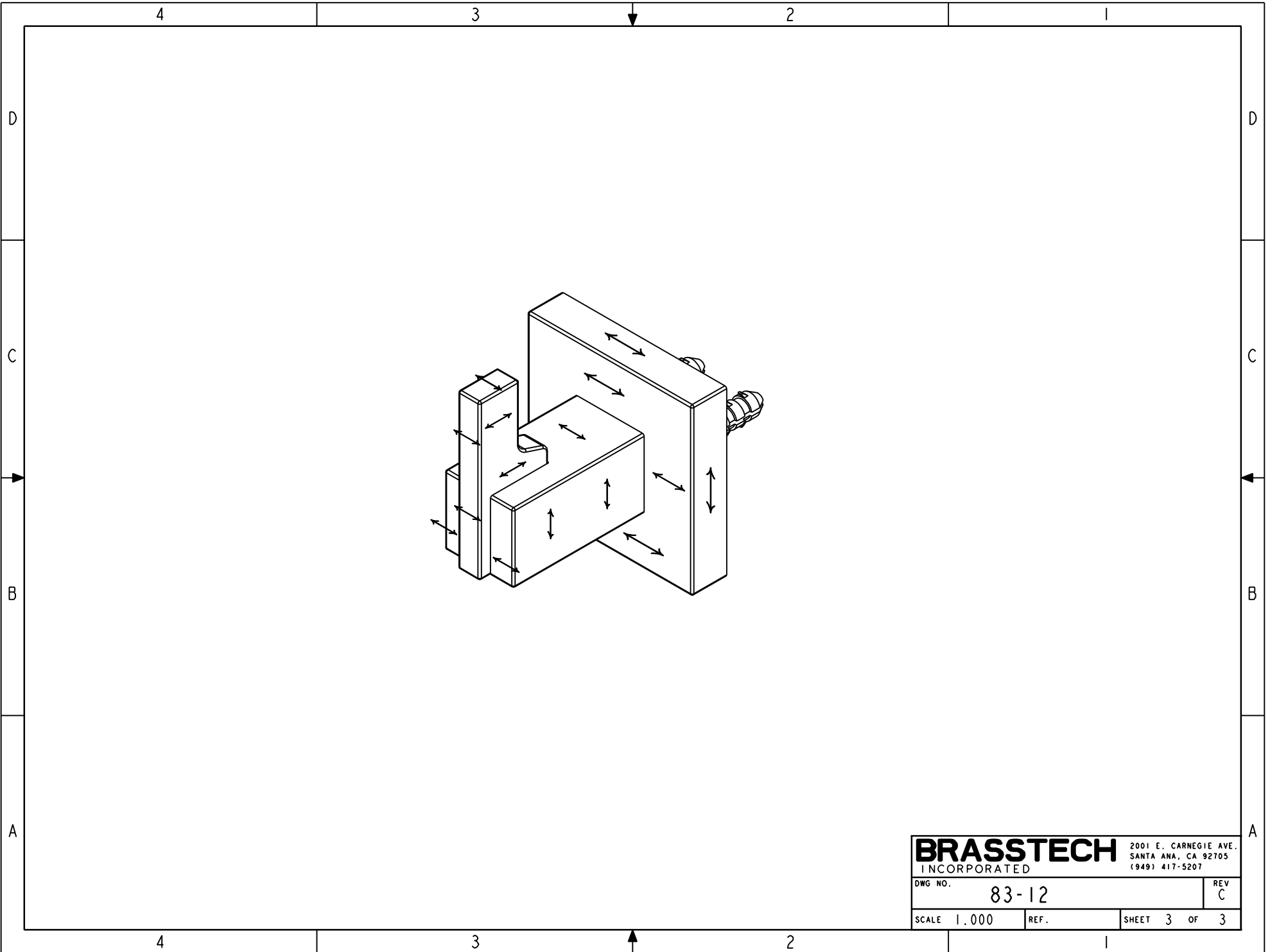
SINGLE ROBE HOOK

DWG NO. 83-12 REV C

SCALE .700 REF. SHEET 1 OF 3



<b>BRASSTECH</b>		2001 E. CARNEGIE AVE.	
INCORPORATED		SANTA ANA, CA 92705	
DWG NO. 83-12		REV C	
SCALE .750	REF.	SHEET 2 OF 3	



<b>BRASSTECH</b>		2001 E. CARNEGIE AVE.	
INCORPORATED		SANTA ANA, CA 92705	
		(949) 417-5207	
DWG NO.	83-12	REV	C
SCALE 1.000	REF.	SHEET 3	OF 3