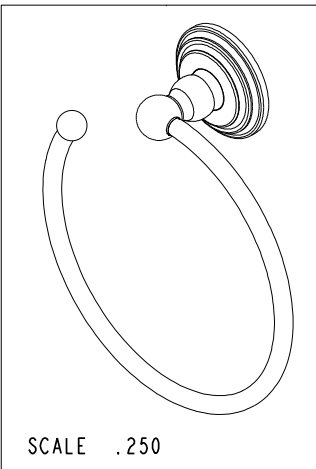
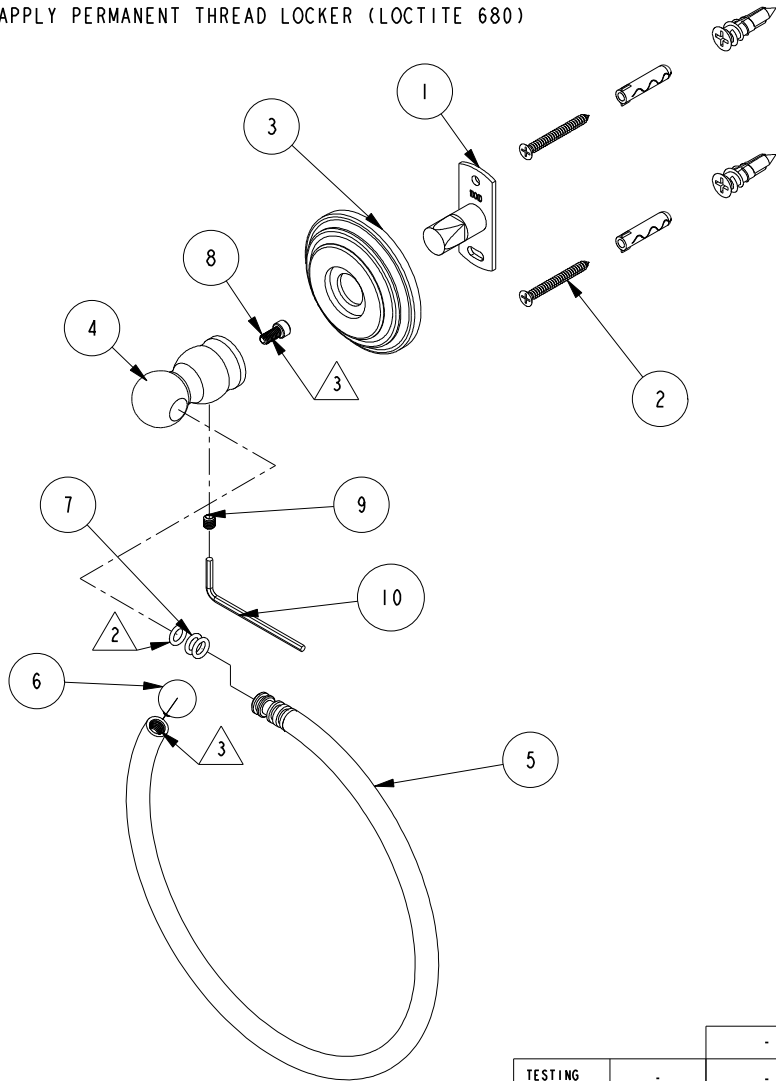


NOTES:

- (N1) 1. FIT / FORM / FUNCTION SHALL FOLLOW PS-E.008.
- 2. APPLY LIGHT FILM OF DOW III CRONING SILICON GREASE
- 3. APPLY PERMANENT THREAD LOCKER (LOCTITE 680)



**BILL OF MATERIAL (CURRENT LEVEL)**

ITEM	PT/ASSY	DESCRIPTION	TYPE	QTY.
1	11XXD	SOLID MOUNTING BRACKET	PART	1
2	1-206	HARDWARE PACK	ASSEMBLY	1
3	1100C	TOWEL SHELF ROSETTE	PART	1
4	40750	POST - OPEN TOWEL RING	PART	1
5	7-759	TOWEL RING	ASSEMBLY	1
6	40754	FINIAL	PART	1
7	91049	O-RING, #2- 010, EPDM, 65-75 DURO, NSF 61	PART	3
8	92527	SCRW, 8-32 X 3/8 SKT CAP HD SS	PART	1
9	92308	SCRW, M5 X 5 SKT HD CUP PT W/ SELF LOC SS	PART	1
10	10888	HEX KEY, 2.5MM ALLOY STEEL	PART	1

TESTING	-	-	-
ASSEMBLY	-	-	-
PLATING	-	-	-
POLISHING	-	NEXT ASSY	USED ON
MACHINING	-	APPLICATION	
TOOLING FIXTURE #	REMOVE ALL BURRS AND SHARP EDGES		

UNITS ARE: INCHES [MM]  
 TOLERANCES ARE:  
 FRACTIONS DECIMALS ANGLES  
 $\pm 1/16"$  .X  $\pm .1$  [2.5]  $\pm 1^\circ$   
 .XX  $\pm .06$  [1.5]

(X.XXX) DENOTES CRITICAL DIMS.  
 ALL THREADS ARE CRITICAL

DRAWN R.S. 7/26/19  
 CHECKED J.M. 7/26/19  
 APPROVED J.M. 7/26/19

**BRASSTECH** 2001 CARNEGIE AVE.  
 INCORPORATED SANTA ANA, CA 92705  
 (949) 417-5207

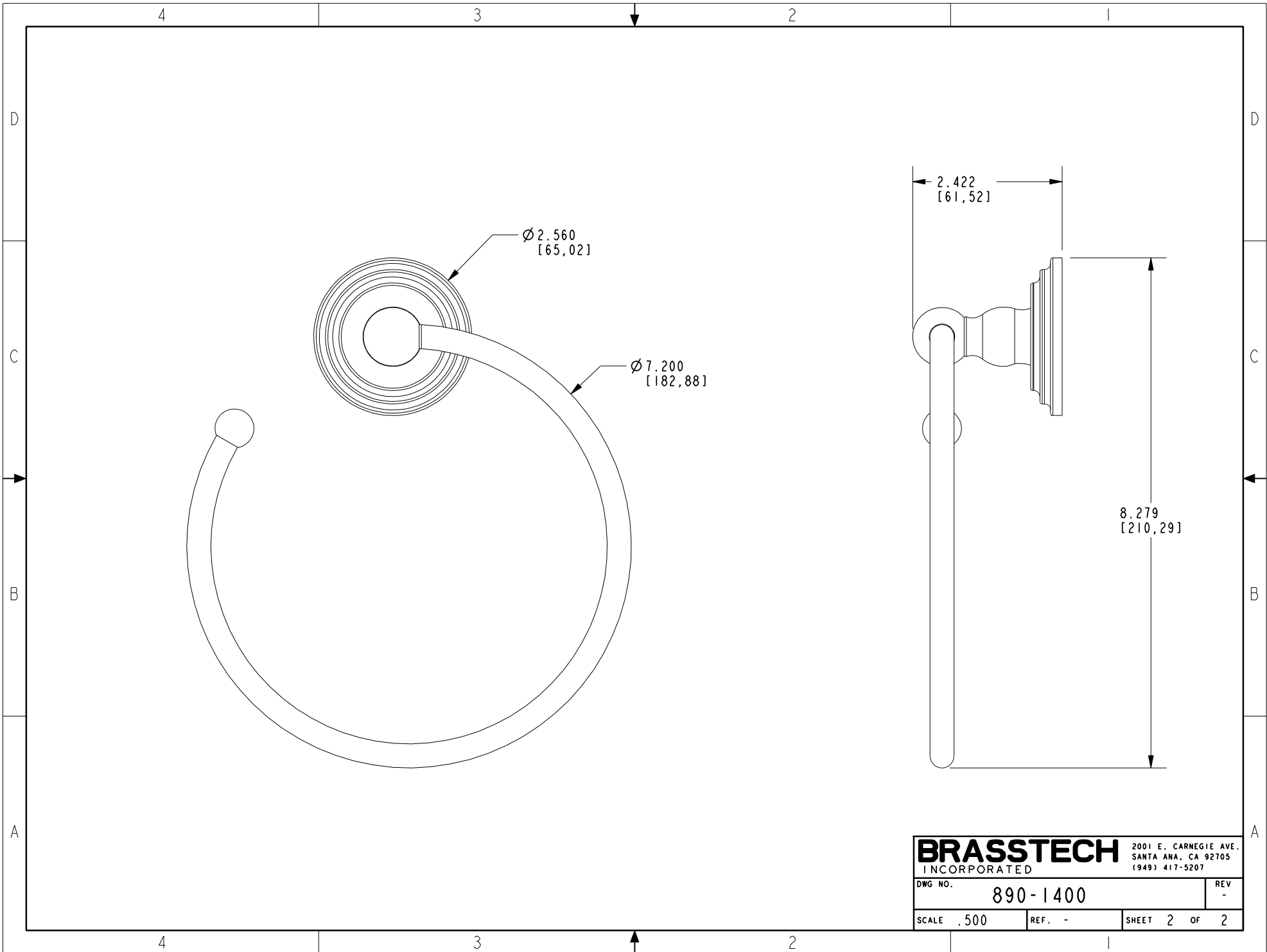
**OPEN TOWEL RING**

DWG NO. **890-1400** REV -

SCALE .312 REF. - SHEET 1 OF 2

COPYRIGHT 2005 BRASSTECH, INC.  
 THESE DRAWINGS AND THE DESIGNS  
 DEPICTED HEREIN ARE THE PROPRIETARY  
 PROPERTY OF BRASSTECH. ANY USE  
 OR REPRODUCTION IS SUBJECT TO  
 THE EXPRESS APPROVAL OF BRASSTECH.  
 UNAUTHORIZED USE IS STRICTLY  
 PROHIBITED. ALL RIGHTS RESERVED.

-	-	EN-3911	07/26/19	J.M.
ZONE	REV	DESCRIPTION	DATE	APPROVED



**BRASSTECH** 2001 E. CARNEGIE AVE.  
 INCORPORATED SANTA ANA, CA 92705  
 (949) 417-5207

DWG NO.	890-1400	REV	-
SCALE	.500	REF.	-
SHEET 2		OF 2	