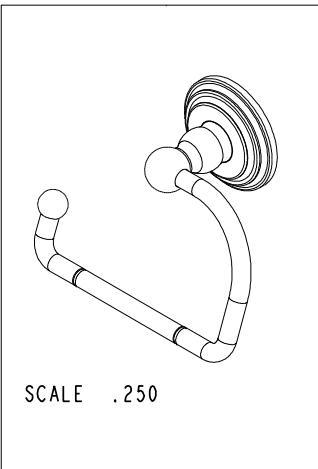
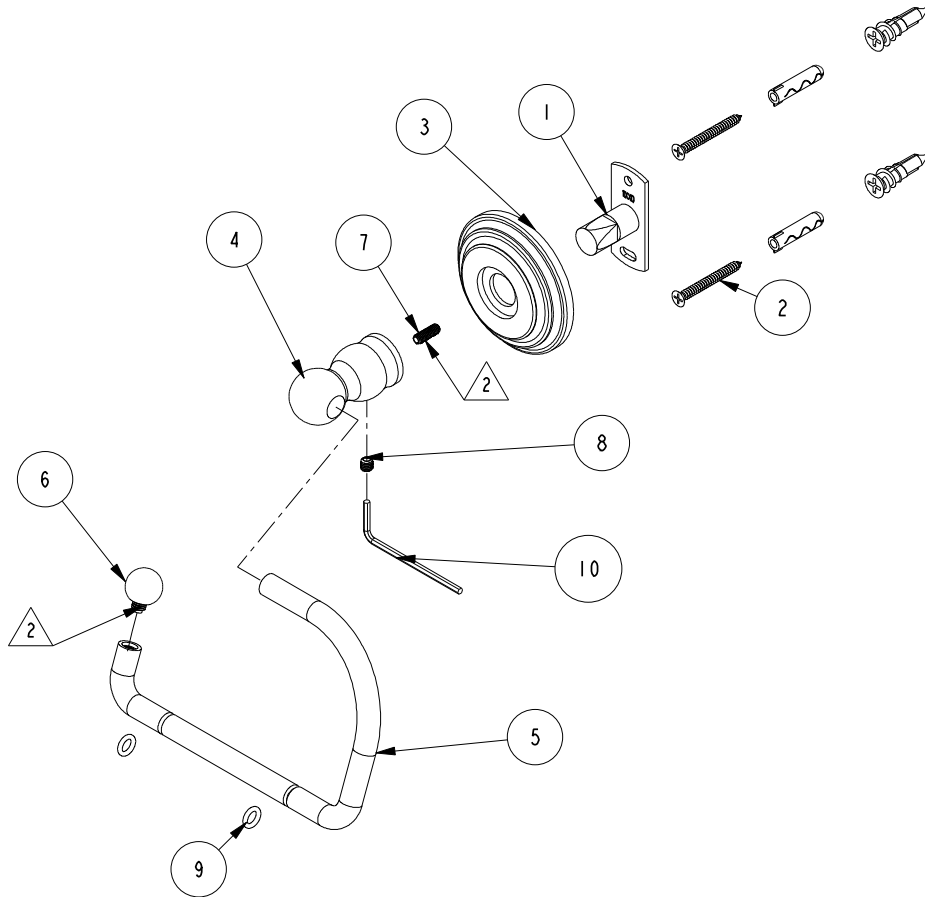


NOTES:

(N1) 1. FIT / FORM / FUNCTION SHALL FOLLOW PS-E.008.

2 APPLY PERMANENT THREAD LOCKER (LOCTITE 680)



| BILL OF MATERIAL (CURRENT LEVEL) |         |   |          |      |
|----------------------------------|---------|---|----------|------|
| ITEM                             | PT/ASSY | DESCRIPTION                               | TYPE     | QTY. |
| 1                                | 11XXD   | SOLID MOUNTING BRACKET                    | PART     | 1    |
| 2                                | 1-206   | HARDWARE PACK                             | ASSEMBLY | 1    |
| 3                                | 1100C   | TOWEL SHELF ROSETTE                       | PART     | 1    |
| 4                                | 40750   | POST - OPEN TOWEL RING                    | PART     | 1    |
| 5                                | 40757   | HANGING TISSUE BAR                        | PART     | 1    |
| 6                                | 40754   | FINIAL                                    | PART     | 1    |
| 7                                | 92486   | SCRW, 8-32 X 1/2 SKT HD CUP PT SS         | PART     | 1    |
| 8                                | 92308   | SCRW, M5 X 5 SKT HD CUP PT W/ SELF LOC SS | PART     | 1    |
| 9                                | 91578   | O-RING, 2 X 6MM ID, EPDM, 65-75 DURO      | PART     | 2    |
| 10                               | 10888   | HEX KEY, 2.5MM ALLOY STEEL                | PART     | 1    |

|                   |                                  |             |         |
|-------------------|----------------------------------|-------------|---------|
| TESTING           | -                                | -           | -       |
| ASSEMBLY          | -                                | -           | -       |
| PLATING           | -                                | -           | -       |
| POLISHING         | -                                | NEXT ASSY   | USED ON |
| MACHINING         | -                                | APPLICATION |         |
| TOOLING FIXTURE # | REMOVE ALL BURRS AND SHARP EDGES |             |         |

|                                |                |
|--------------------------------|----------------|
| UNITS ARE: INCHES [MM]         |                |
| TOLERANCES ARE:                |                |
| FRACTIONS                      | DECIMALS       |
| ±1/16"                         | .X ±.1 [2.5]   |
|                                | .XX ±.06 [1.5] |
| ANGLES ±1°                     |                |
| (X.XXX) DENOTES CRITICAL DIMS. |                |
| ALL THREADS ARE CRITICAL       |                |
| DRAWN                          | R.S. 7/26/19   |
| CHECKED                        | J.M. 7/26/19   |
| APPROVED                       | J.M. 7/26/19   |

**BRASSTECH** 2001 CARNEGIE AVE.  
INCORPORATED SANTA ANA, CA 92705  
(949) 417-5207

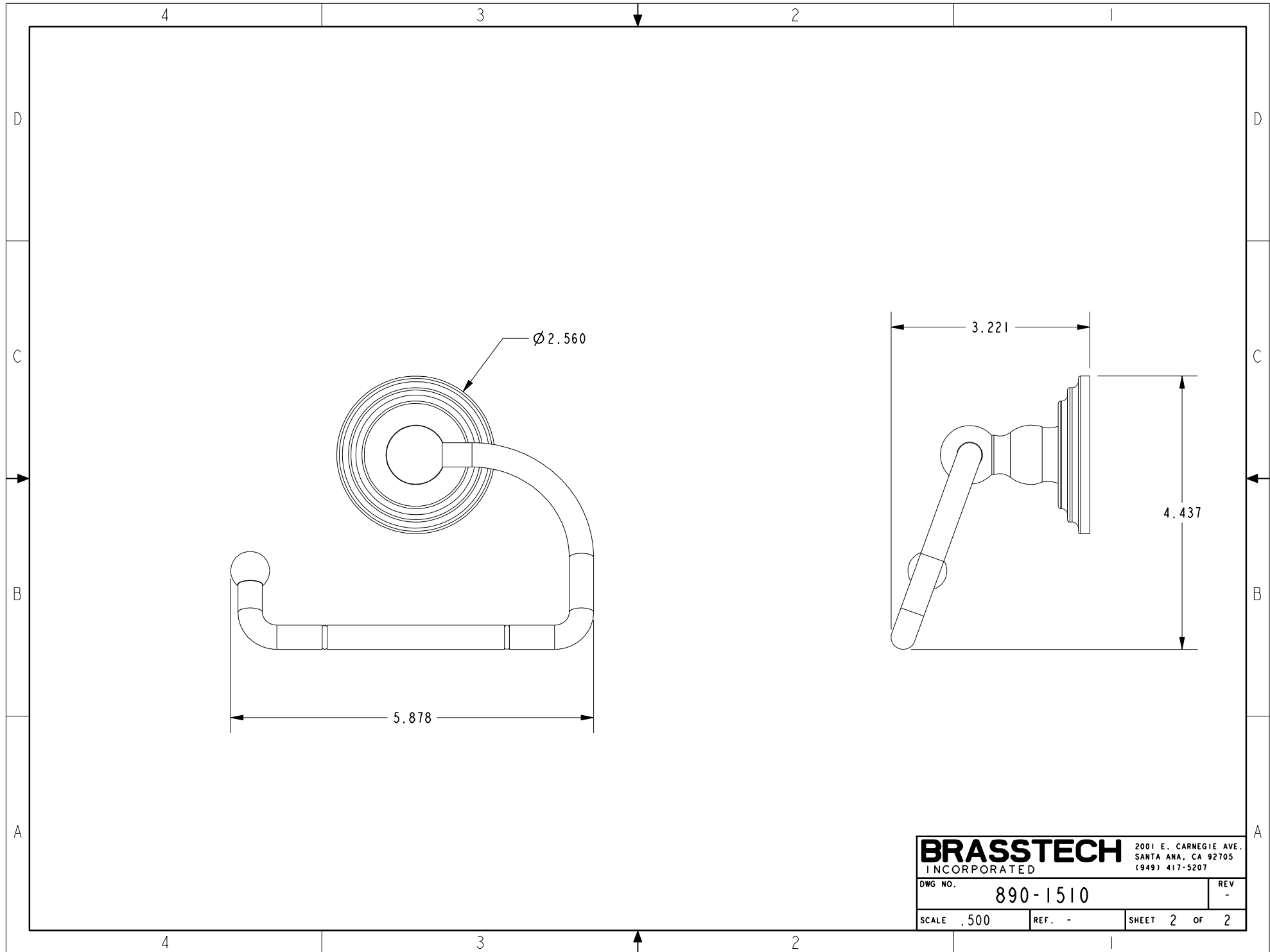
**HANGING TP HOLDER**

DWG NO. **890-1510** REV -

SCALE .312 REF. - SHEET 1 OF 2

COPYRIGHT 2005 BRASSTECH, INC. THESE DRAWINGS AND THE DESIGNS DEPICTED HEREIN ARE THE PROPRIETARY PROPERTY OF BRASSTECH. ANY USE OR REPRODUCTION IS SUBJECT TO THE EXPRESS APPROVAL OF BRASSTECH. UNAUTHORIZED USE IS STRICTLY PROHIBITED. ALL RIGHTS RESERVED.

|         |          |             |
|---------|----------|-------------|
| EN-3911 | 07/26/19 | J.M.        |
| ZONE    | REV      | DESCRIPTION |
| -       | -        | -           |



|                  |          |  |        |
|------------------|----------|--|--------|
| <b>BRASSTECH</b> |          | 2001 E. CARNEGIE AVE.<br>SANTA ANA, CA 92705<br>(949) 417-5207 |        |
| DWG NO.          | 890-1510 | REF.   | -      |
| SCALE            | .500     | SHEET  | 2 OF 2 |
|                  |          | REV  | -      |