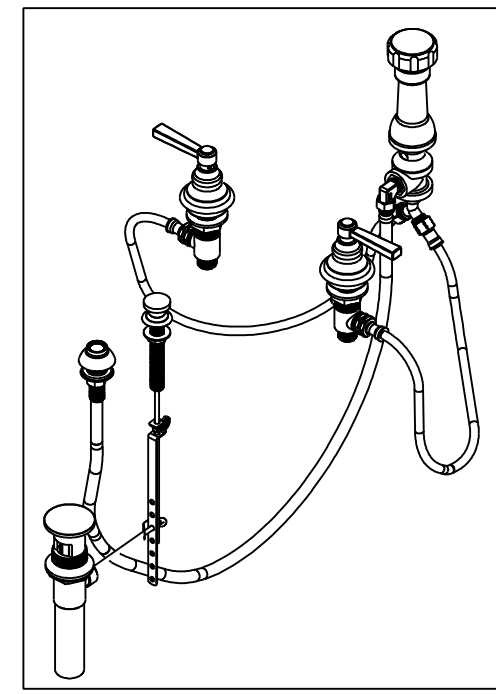


**BILL OF MATERIAL (CURRENT LEVEL)**

ITEM	PT/ASSY	DESCRIPTION	TYPE	QTY.
1	2-159	POP-UP ROD GUIDE ASSEMBLY	ASSEMBLY	1
2	2-235	BIDET DIVERTER / V. BRE	ASSEMBLY	1
3	2-236	DOUCHE SPRAY ASSEMBLY	ASSEMBLY	1
4	325	POP UP ASSEMBLY	ASSEMBLY	1
5	10961	SMOOTH POP - UP KNOB	PART	1
6	10288	3/16" POP UP ROD	PART	1
7	10048	ESCUTCHEON W/S VALVE	PART	2
8	10523	HEX ESCUTCHEON BONNET	PART	2
9	<del>91231</del>	O-RING, #2-136, EPDM, 65-75 DURO	PART	2
10	2-436	LEVER HANDLE ASM	ASSEMBLY	2
11	1-542	VALVE KIT - BIDET	ASSEMBLY	1

91753



REV B EN-3722 02/08/2019 CG

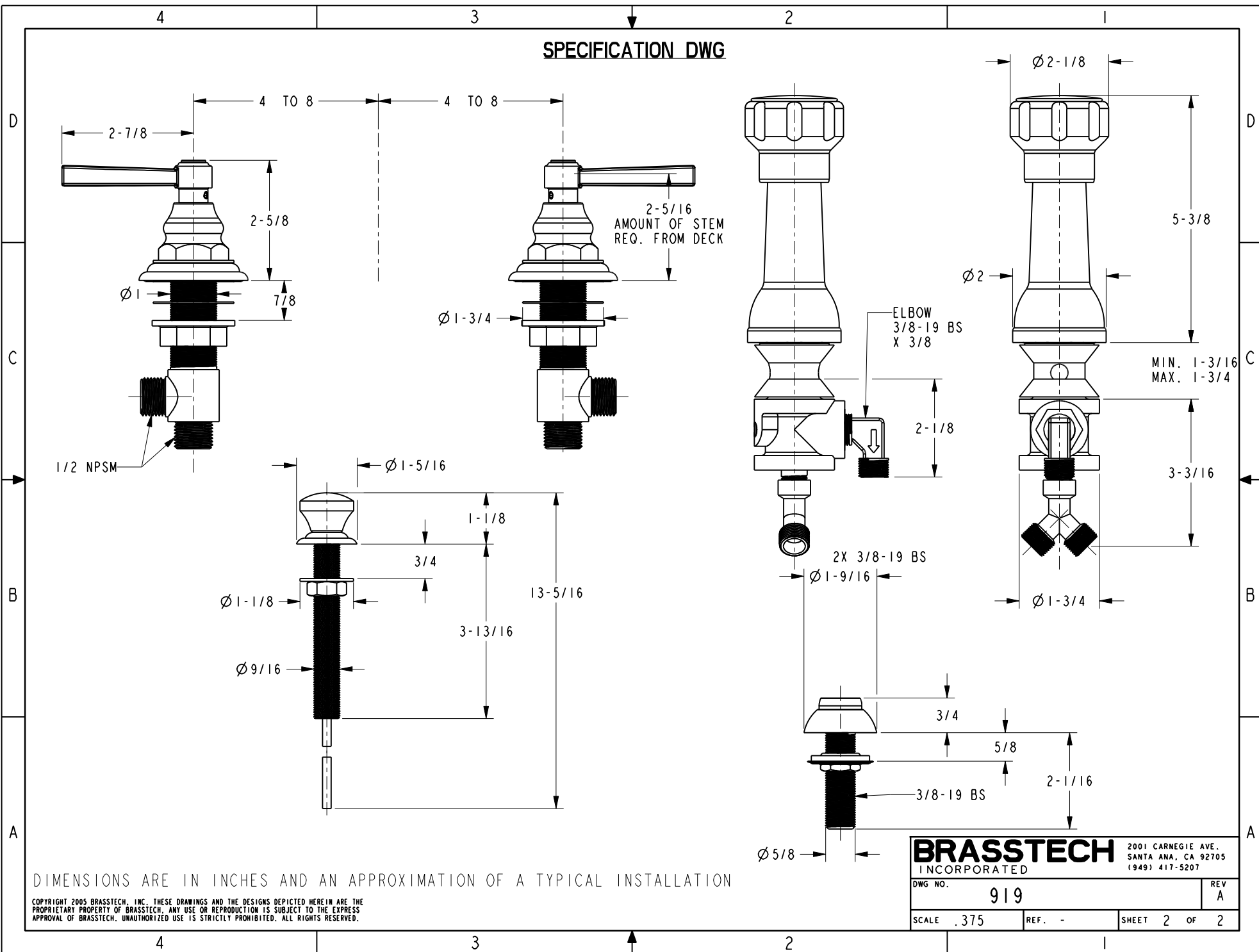
COPYRIGHT 2005 BRASSTECH, INC. THESE DRAWINGS AND THE DESIGNS DEPICTED HEREIN ARE THE PROPRIETARY PROPERTY OF BRASSTECH. ANY USE OR REPRODUCTION IS SUBJECT TO THE EXPRESS APPROVAL OF BRASSTECH. UNAUTHORIZED USE IS STRICTLY PROHIBITED. ALL RIGHTS RESERVED.

**BRASSTECH**  
INCORPORATED  
2001 CARNEGIE AVE.  
SANTA ANA, CA 92705  
(949) 417-5207

BIDET SET

ASSY. NO.	919		
SCALE	.200	REF.	-
SHEET	1	OF	2
REV		REV DESC	
		DATE	

**SPECIFICATION DWG**



DIMENSIONS ARE IN INCHES AND AN APPROXIMATION OF A TYPICAL INSTALLATION

COPYRIGHT 2005 BRASSTECH, INC. THESE DRAWINGS AND THE DESIGNS DEPICTED HEREIN ARE THE PROPRIETARY PROPERTY OF BRASSTECH. ANY USE OR REPRODUCTION IS SUBJECT TO THE EXPRESS APPROVAL OF BRASSTECH. UNAUTHORIZED USE IS STRICTLY PROHIBITED. ALL RIGHTS RESERVED.

<b>BRASSTECH</b>		2001 CARNEGIE AVE. SANTA ANA, CA 92705 (949) 417-5207	
DWG NO.	<b>919</b>	REV	<b>A</b>
SCALE	.375	REF.	-
SHEET		2	OF 2