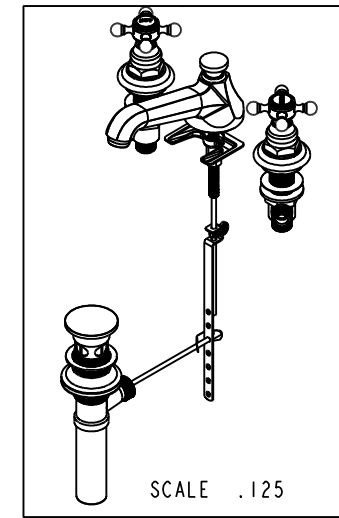
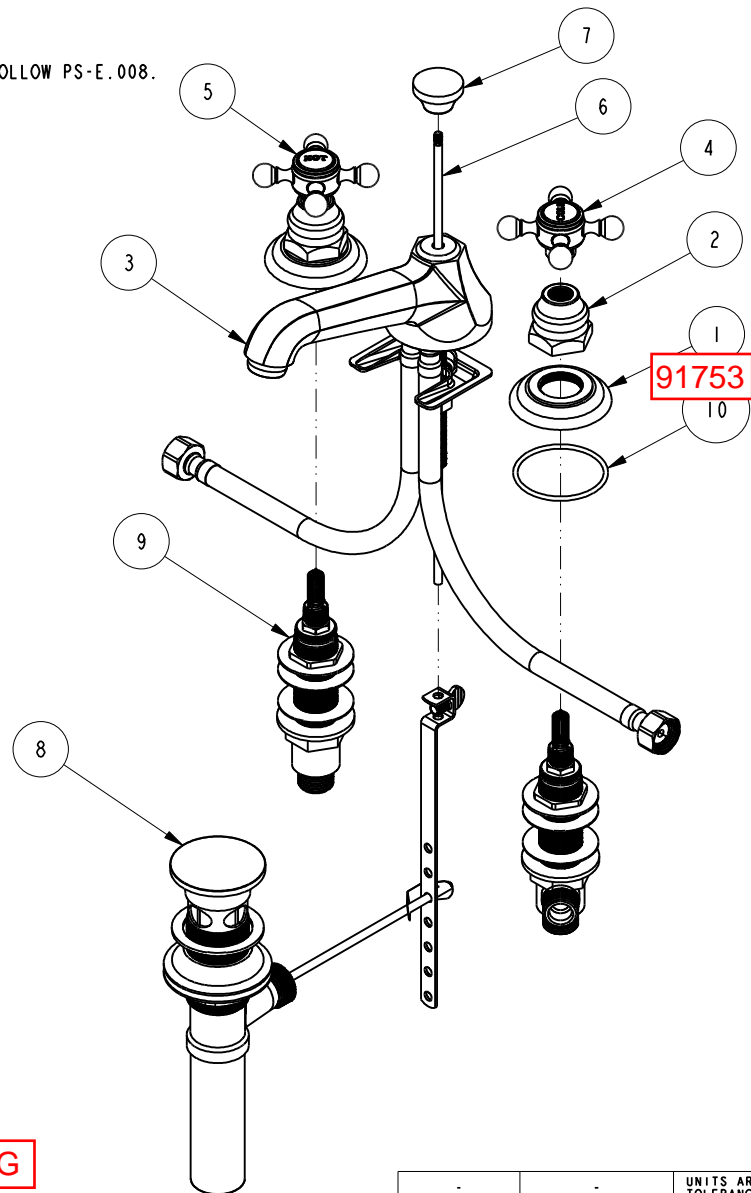


NOTES:

(N1) 1. FIT / FORM / FUNCTION SHALL FOLLOW PS-E.008.

BILL OF MATERIAL (CURRENT LEVEL)

ITEM	PT/ASSY	DESCRIPTION	TYPE	QTY.
1	10048	ESCUTCHEON W/S VALVE	PART	2
2	10523	HEX ESCUTCHEON BONNET	PART	2
3	3-346	ASSY, SPOUT	ASSEMBLY	1
4	2-142	HANDLE ONLY, COLD	ASSEMBLY	1
5	2-141	HANDLE ONLY, HOT	ASSEMBLY	1
6	10288	3/16" POP UP ROD	PART	1
7	10961	SMOOTH POP - UP KNOB	PART	1
8	325	POP UP ASSEMBLY	ASSEMBLY	1
9	1-525_920	W/S VALVE ASM	ASSEMBLY	1
10	91231	O-RING, #2-136, EPDM, 65-75 DURO	PART	2



REV F EN-3722 02/08/2019 CG

ZONE	REV	DESCRIPTION	DATE	APPROVED
-	E	EN-3371	08/04/17	J.M
-	D	EN-2334	12/18/12	-
-	C	EN-1616	09/13/10	-
-	B	EO-1015	06/10/08	-
-	A	EO-0818	03/30/07	-

COPYRIGHT 2005 BRASSTECH, INC.
THESE DRAWINGS AND THE DESIGNS
DEPICTED HEREIN ARE THE PROPRIETARY
PROPERTY OF BRASSTECH. ANY USE
OR REPRODUCTION IS SUBJECT TO
THE EXPRESS APPROVAL OF BRASSTECH.
UNAUTHORIZED USE IS STRICTLY
PROHIBITED. ALL RIGHTS RESERVED.

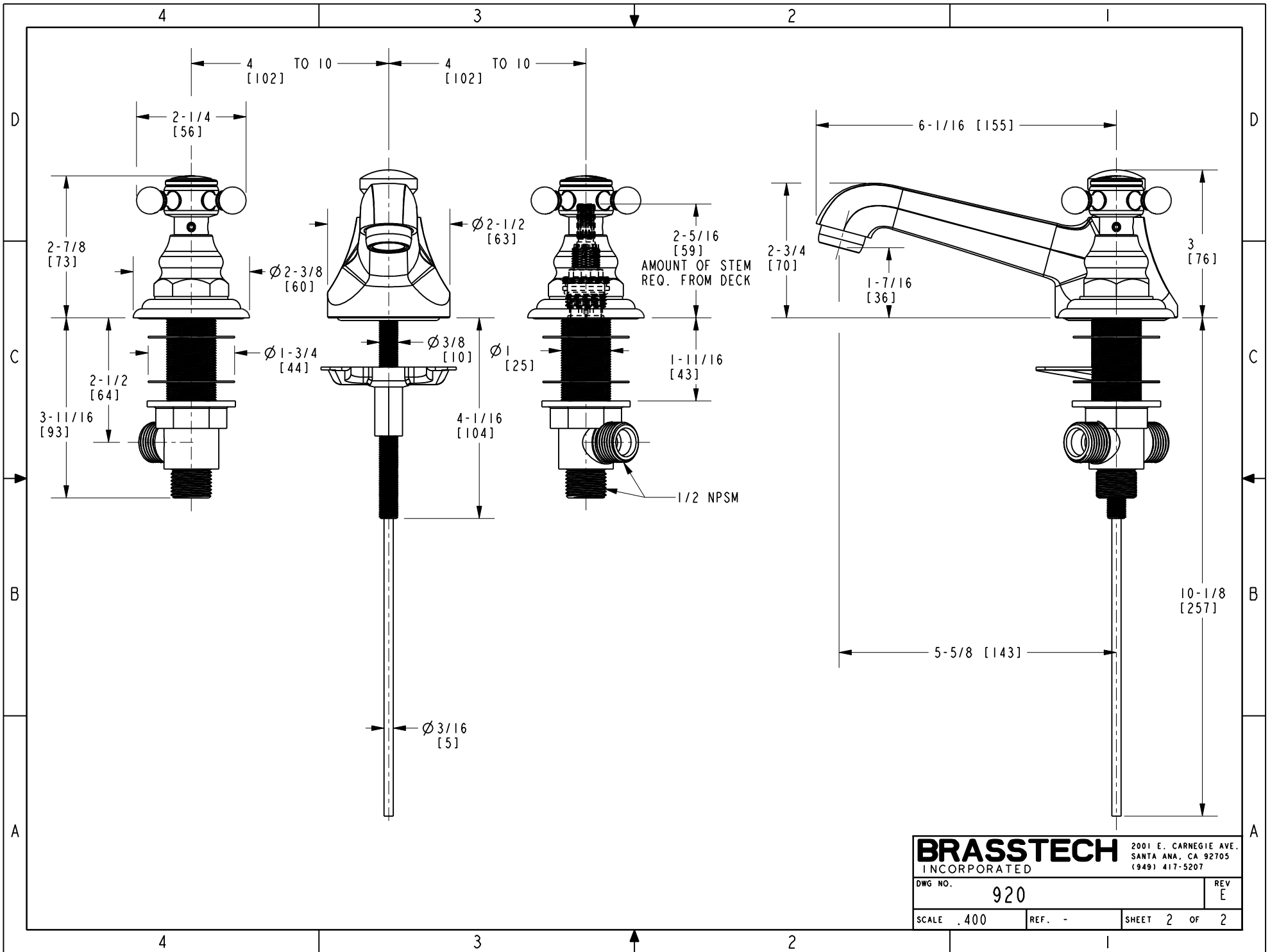
TESTING	-	-	-	-
ASSEMBLY	-	-	-	-
PLATING	-	-	-	-
POLISHING	-	-	-	-
MACHINING	-	-	-	-
TOOLING FIXTURE #				

UNITS ARE: INCHES [MM]
TOLERANCES ARE:
FRACTIONS DECIMALS ANGLES
±1/16" .X ±.1 [2,3] ±1"
.XX ±.06 [1,3]
(X.XXX) DENOTES CRITICAL DIMS.
ALL THREADS ARE CRITICAL
DRAWN VINAY 08/04/17
CHECKED RAVINDRA 08/04/17
APPROVED J.M 08/04/17

BRASSTECH 2001 CARNEGIE AVE.
INCORPORATED SANTA ANA, CA 92705
(949) 417-5207

TOP ASSY, FAUCET,
WIDESPREAD

DWG NO. 920	REV F		
SCALE .225	REF. -	SHEET 1	OF 2



BRASSTECH		2001 E. CARNEGIE AVE.
INCORPORATED		SANTA ANA, CA 92705
		(949) 417-5207
DWG NO.	920	REV E
SCALE .400	REF. -	SHEET 2 OF 2