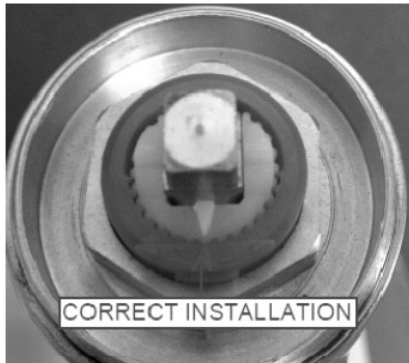
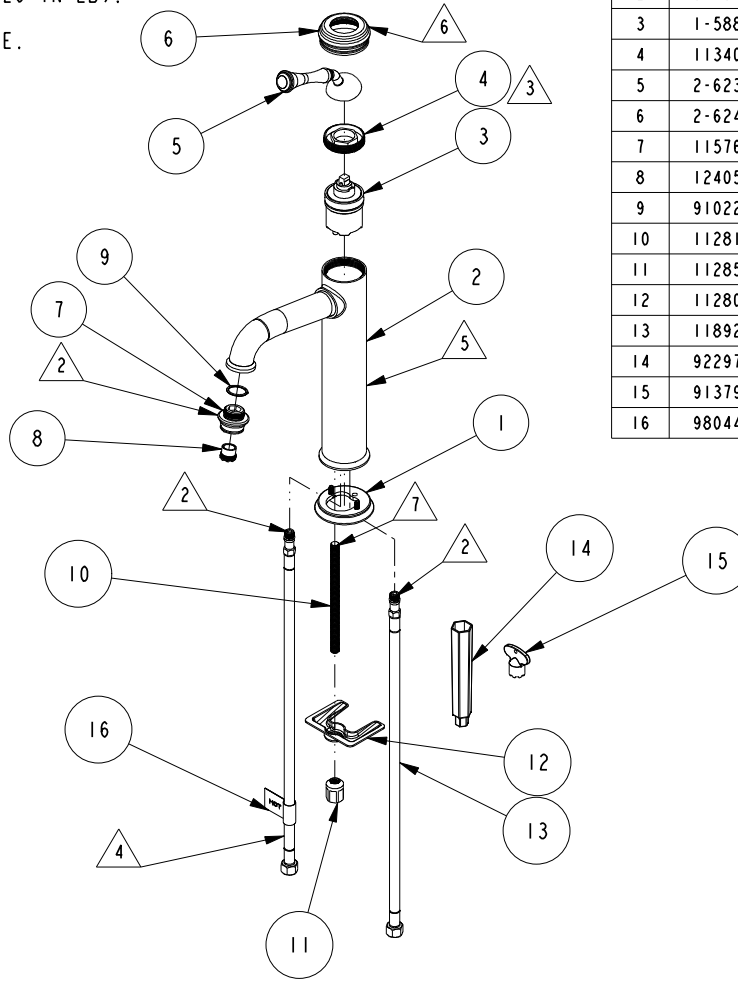
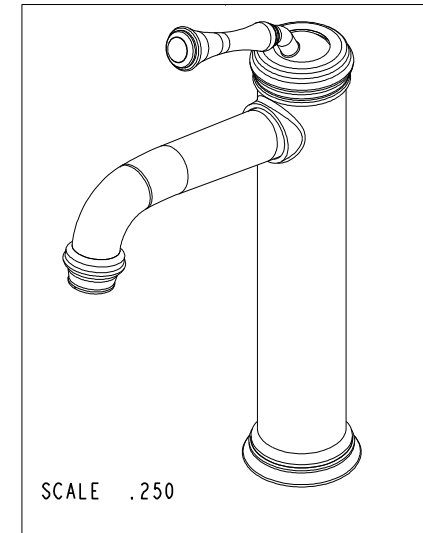


NOTES:

1. TO INSPECT ASSEMBLY, FOLLOW FIRST ARTICLE AND IN PROCESS INSPECTION SHEET.
2. APPLY LOCTITE 680, AND SNUG FIT WHEN ASSEMBLED (INSTALLATION TORQUE MUST BE 17-20 IN-LB).
3. TIGHTEN TO 14-16 FT-LBS OF TORQUE.
4. APPLY LABEL #98044
5. APPLY LABEL #98109 TO BACKSIDE OF BASE
6. APPLY LIGHT FILM OF SUPER LUBE GREASE OR EQUIVALENT BETWEEN ITEM 5 AND 6
7. APPLY LOCTITE 680.



BILL OF MATERIAL (CURRENT LEVEL)				
ITEM	PT/ASSY	DESCRIPTION	TYPE	QTY.
1	2-622	SPOUT BASE ESC ASM	ASSEMBLY	1
2	8-057	VESSEL SINK SPOUT ASM	ASSEMBLY	1
3	1-588	CARTRIDGE, SLEEVE ASM	ASSEMBLY	1
4	11340	CARTRIDGE PACKING NUT	PART	1
5	2-623	SINGLE LEVER HANDLE ASM	ASSEMBLY	4
6	2-624	CAP NUT ASSEMBLY	ASSEMBLY	1
7	11576	AERATOR SHELL	PART	1
8	12405	CACHE AERATOR INSERT, TT SIZE, 1.2 GPM	PART	1
9	91022	O-RING, #2- 018, EPDM, 65-75 DURO, NSF 61	PART	1
10	11281	MOUNTING STUD	PART	1
11	11285	MOUNTING NUT	PART	1
12	11280	MOUNTING BRACKET	PART	1
13	11892	SUPPLY LINE CONNECTOR ASM	PART	2
14	92297	INSTALLATION TOOL, WRENCH	PART	1
15	91379	AERATOR KEY	PART	1
16	98044	LABEL - HOT	PART	1



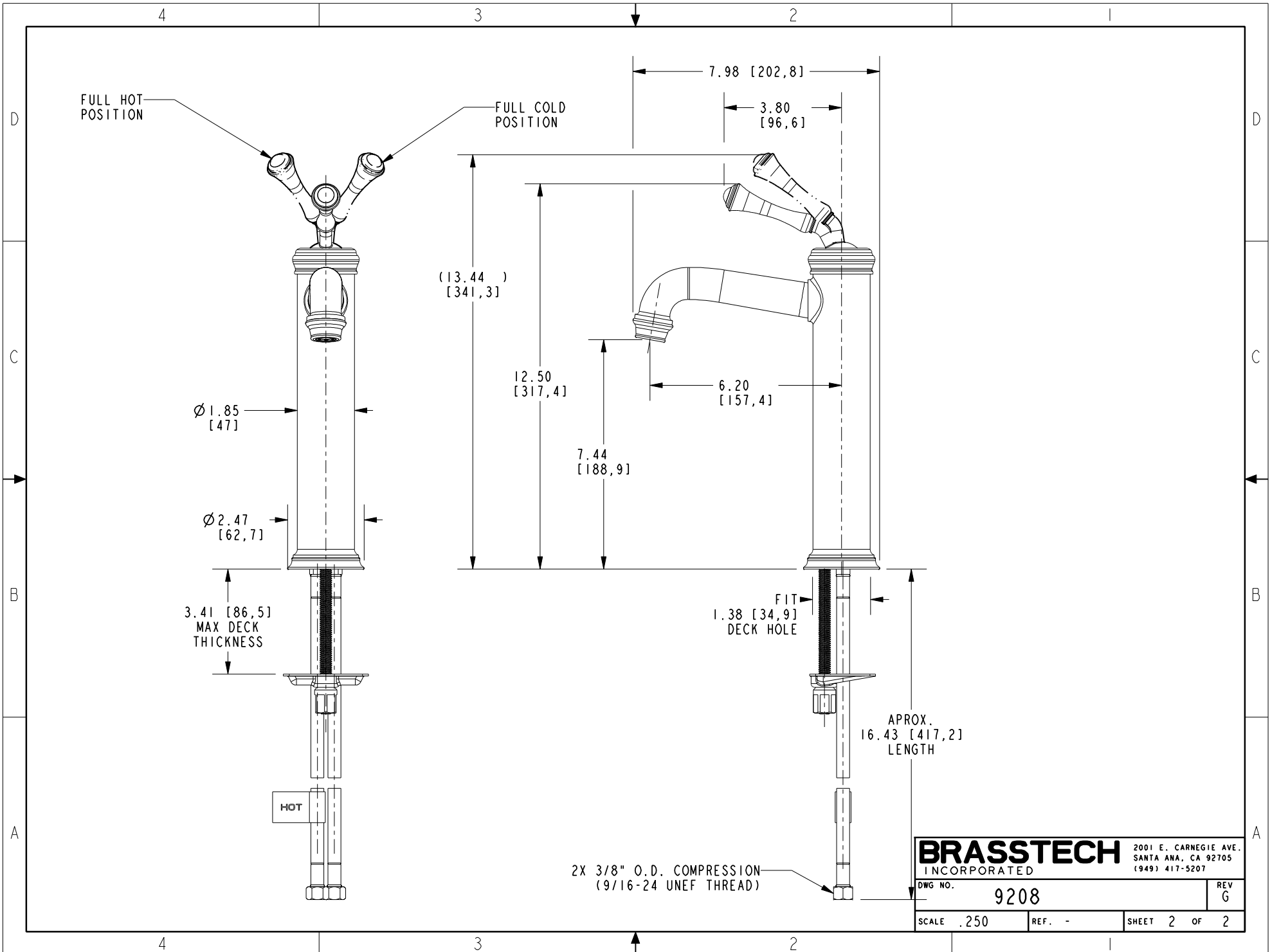
-	G	EN-4300hh	04/13/21	R.S.
-	F	EN-3404	10/02/17	V.V.
-	E	EN-2896c	05/24/16	J.A
-	D	EN-2643	01/15/16	J.M
-	C	EN-2639	11/14/13	-
-	B	EN-2119	07/24/12	-
-	A	EN-1489	02/22/10	-
-	-	EN-1291	11/11/09	-
ZONE	REV	DESCRIPTION	DATE	APPROVED

COPYRIGHT 2005 BRASSTECH, INC. THESE DRAWINGS AND THE DESIGNS DEPICTED HEREIN ARE THE PROPRIETARY PROPERTY OF BRASSTECH. ANY USE OR REPRODUCTION IS SUBJECT TO THE EXPRESS APPROVAL OF BRASSTECH. UNAUTHORIZED USE IS STRICTLY PROHIBITED. ALL RIGHTS RESERVED.

TESTING	-	-	-
ASSEMBLY	-	-	-
PLATING	-	-	-
POLISHING	-	NEXT ASSY	USED ON
MACHINING	-	APPLICATION	
TOOLING FIXTURE #	REMOVE ALL BURRS AND SHARP EDGES		

UNITS ARE: INCHES [MM]			
TOLERANCES ARE:			
FRACTIONS	DECIMALS	ANGLES	
±1/16"	.X ±.1 [2.5]	±1°	
	.XX ±.06 [1.5]		
(X.XXX) DENOTES CRITICAL DIMS. ALL THREADS ARE CRITICAL			
DRAWN	AMARISH	05/24/16	
CHECKED	JINSON	05/24/16	
APPROVED	J.A	05/24/16	

<b>BRASSTECH</b>		2001 CARNEGIE AVE. SANTA ANA, CA 92705 (949) 417-5207	
INCORPORATED			
SINGLE HOLEBAR LAVATORY FAUCET FOR VESSEL SINKS			
DWG NO.		REV	
9208		G	
SCALE	REF.	SHEET	OF
.125	-	1	2



<b>BRASSTECH</b>		2001 E. CARNEGIE AVE. SANTA ANA, CA 92705 (949) 417-5207	
DWG NO. 9208		REV G	
SCALE .250	REF. -	SHEET 2 OF 2	