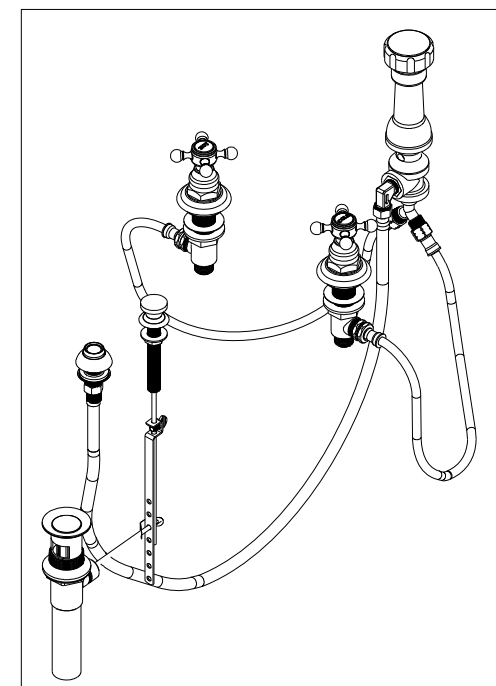


BILL OF MATERIAL (CURRENT LEVEL)

ITEM	PT/ASSY	DESCRIPTION	TYPE	QTY.
1	1-542	VALVE KIT - BIDET	ASSEMBLY	1
2	2-141	HANDLE ONLY, HOT	ASSEMBLY	1
3	10961	SMOOTH POP - UP KNOB	PART	1
4	2-142	HANDLE ONLY, COLD	ASSEMBLY	1
5	2-159	POP-UP ROD GUIDE ASSEMBLY	ASSEMBLY	1
6	2-235	BIDET DIVERTER / V. BRE	ASSEMBLY	1
7	2-236	DOUCHE SPRAY ASSEMBLY	ASSEMBLY	1
8	325	POP UP ASSEMBLY	ASSEMBLY	1
9	10048	ESCUTCHEON W/S VALVE	PART	2
10	10288	3/16" POP UP ROD	PART	1
11	10523	HEX ESCUTCHEON BONNET	PART	2
12	91231	O-RING, #2-136, EPDM, 65-75 DURO	PART	2

91753



REV D EN-3722 02/08/2019 CG

COPYRIGHT 2005 BRASSTECH, INC. THESE DRAWINGS AND THE DESIGNS DEPICTED HEREIN ARE THE PROPRIETARY PROPERTY OF BRASSTECH. ANY USE OR REPRODUCTION IS SUBJECT TO THE EXPRESS APPROVAL OF BRASSTECH. UNAUTHORIZED USE IS STRICTLY PROHIBITED. ALL RIGHTS RESERVED.

BRASSTECH
INCORPORATED
2001 E. CARNEGIE AVE.
SANTA ANA, CA 92705
(949) 417-5207

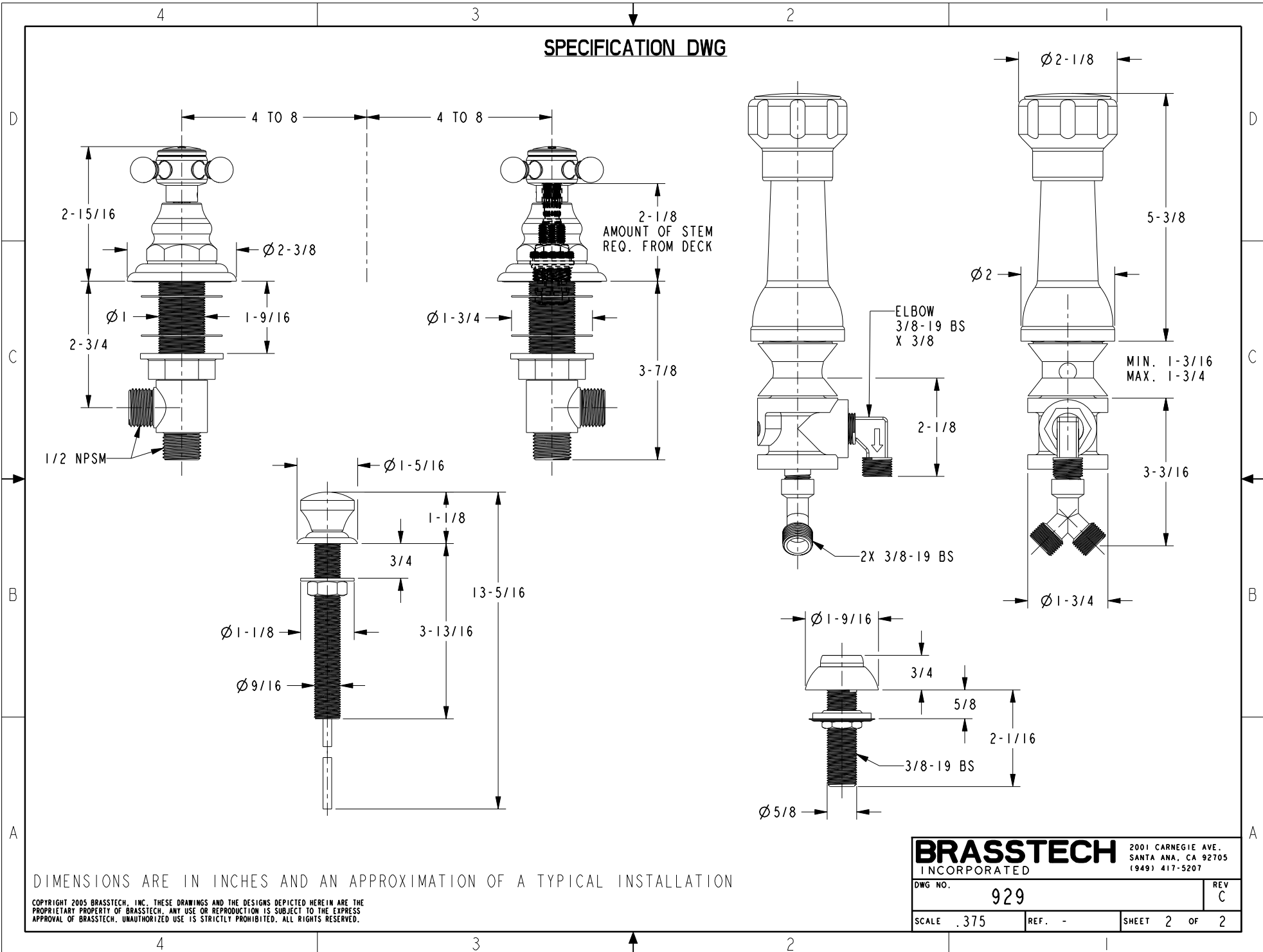
BIDET W/ VACUUM BREAKER

ASSY. NO. 929

SCALE .200 REF. - SHEET 1 OF 2

C	EN-2334	12/20/12
B	EO-0818	03/30/07
A	NEW DVTR	6/00
-	RELEASED	PRE '95
REV	REV DESC	DATE

SPECIFICATION DWG



DIMENSIONS ARE IN INCHES AND AN APPROXIMATION OF A TYPICAL INSTALLATION

COPYRIGHT 2005 BRASSTECH, INC. THESE DRAWINGS AND THE DESIGNS DEPICTED HEREIN ARE THE PROPRIETARY PROPERTY OF BRASSTECH. ANY USE OR REPRODUCTION IS SUBJECT TO THE EXPRESS APPROVAL OF BRASSTECH. UNAUTHORIZED USE IS STRICTLY PROHIBITED. ALL RIGHTS RESERVED.

BRASSTECH		2001 CARNEGIE AVE. SANTA ANA, CA 92705 (949) 417-5207	
DWG NO.	929	REV	C
SCALE	.375	REF.	-
SHEET 2		OF 2	