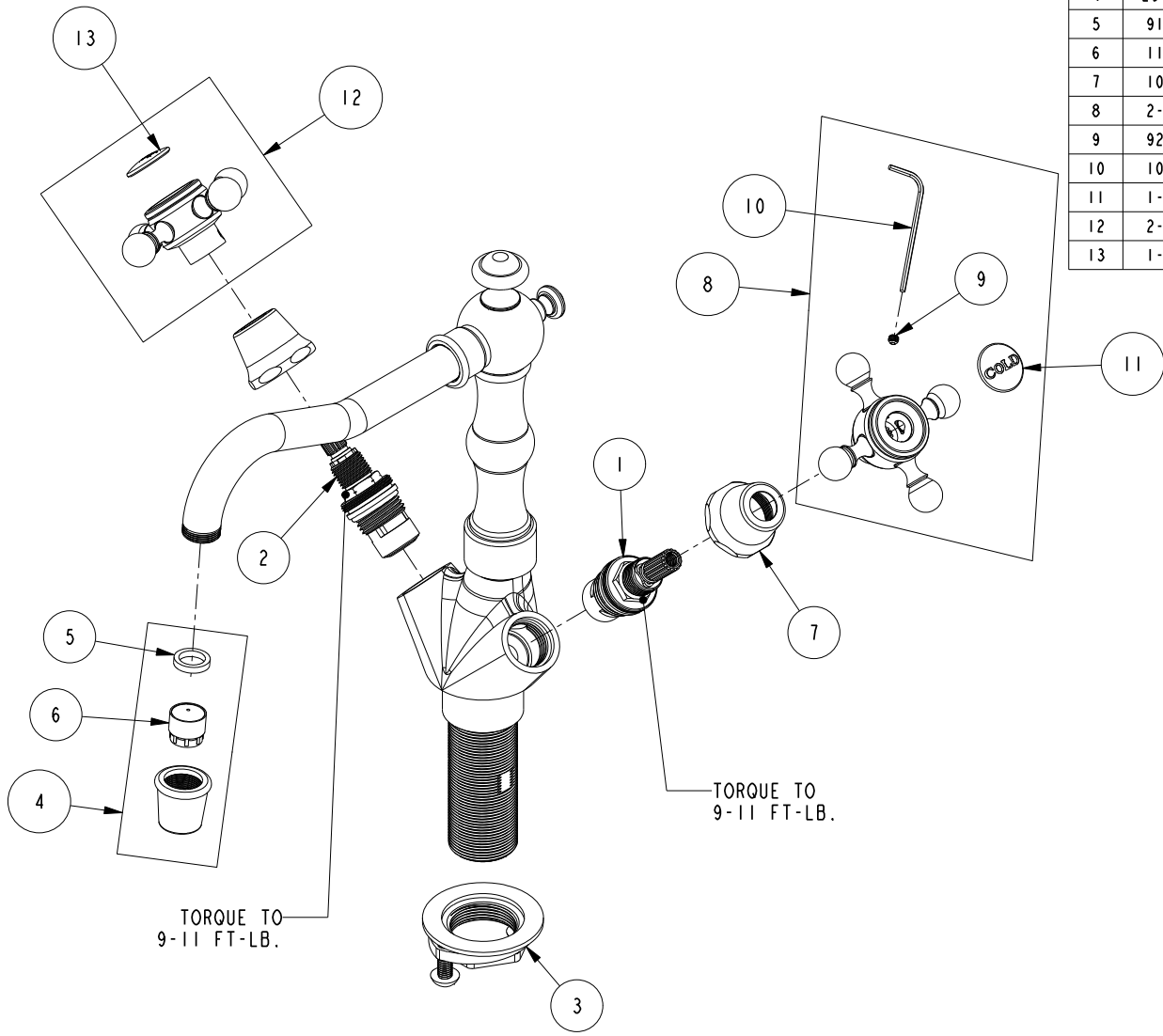


# REPLACEMENT PARTS

ITEM	PT/ASSY	SPECIFY FINISH	DESCRIPTION
1	1-002		W/S CARTRIDGE - HOT
2	1-001		W/S CARTRIDGE - COLD
3	1-393		1-1/8 18 UNEF MOUNTING KIT
4	20-155	YES	AERATOR ASM
5	91265		WSHR, 11 ID X 15 OD X 2.8 MM THK, FLT, RUBBER NSF 61 APPR
6	11526		AERATOR INSERT, TT SIZE, 1.5 GPM
7	10331	YES	BONNET FOR 933, 934
8	2-142	YES	HANDLE ONLY, COLD
9	92000		SCREW 8 - 32 X 1/8 SS
10	10192		HEX KEY TOOL, #8 5/64
11	1-107		COLD BUTTON ASSEMBLY W/ ADHESIVE
12	2-141	YES	HANDLE ONLY, HOT
13	1-108		HOT BUTTON ASSEMBLY W/ ADHESIVE



**BAR FAUCET  
938**

REV G EN-4741 11/29/23 APPROVED RS

**NEWPORT BRASS.**

t: 949.417.5207 | www.newportbrass.com