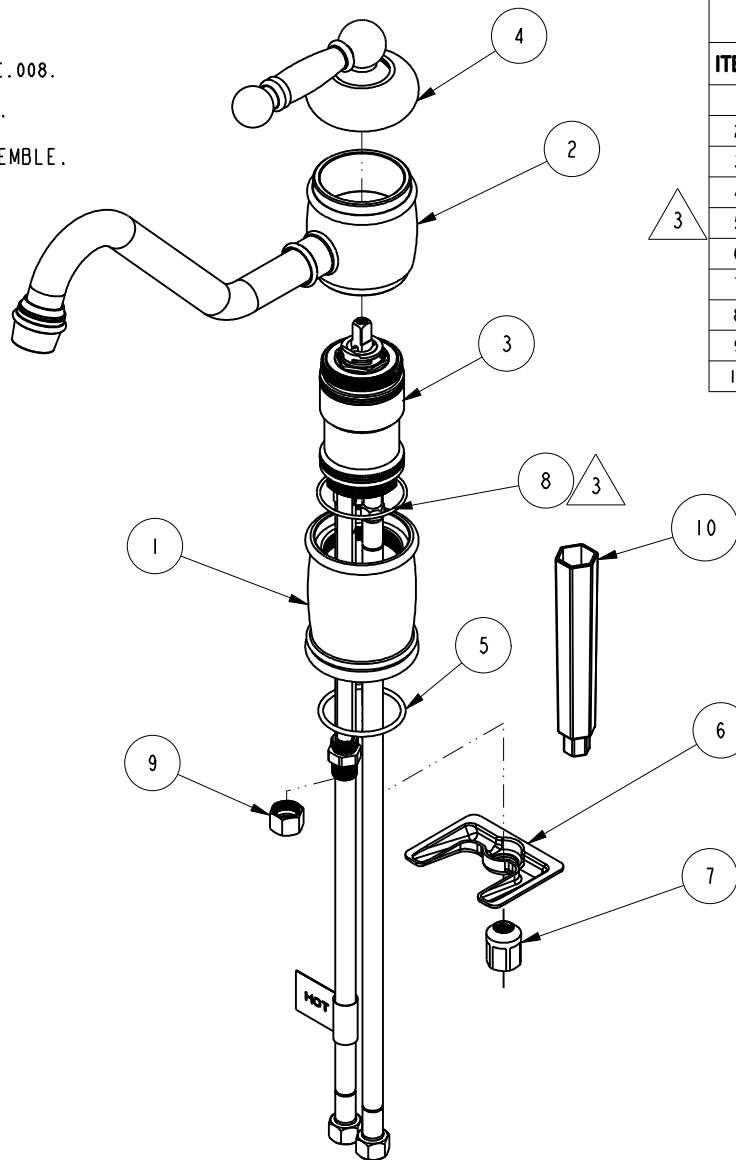


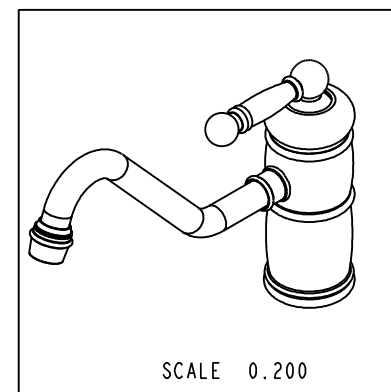
NOTES:

- (N1) 1. FIT / FORM / FUNCTION SHALL FOLLOW PS-E.008.
- (N2) 2. PACKAGE ITEMS 1, 2, AND 6 IN A BAG.
- 3. SLIT THIS TEFLON O-RING BEFORE ASSEMBLE.



BILL OF MATERIAL (CURRENT LEVEL)

ITEM	PT/ASSY	DESCRIPTION	TYPE	QTY.
1	11291	POST SLEEVE	PART	1
2	2-175	SPOUT ASM, 940/941	ASSEMBLY	1
3	1-625	VALVE BODY, ASM	ASSEMBLY	1
4	2-176	ASSY, HANDLE, SINGLE LEVER	ASSEMBLY	1
5	91362	O-RING, #2-130, EPDM, 65-75 DURO	PART	1
6	11280	MOUNTING BRACKET	PART	1
7	11285	MOUNTING NUT	PART	1
8	91413	O-RING, #2-031, PTFE, D55 DURO	PART	1
9	1-179	PLUG, SPRAY ASM	ASSEMBLY	1
10	92297	INSTALLATION TOOL, WRENCH	PART	1



ZONE	REV	DESCRIPTION	DATE	APPROVED
-	E	EN-2643	01/15/16	J.M
-	D	EN-2119	07/17/12	-
-	C	EN-1287	07/23/09	-
-	B	EO-0583	10/14/05	-
-	A	EO-0564	09/12/05	-
-	-	RELEASED	XX/XX/XX	-

COPYRIGHT 2005 BRASSTECH, INC. THESE DRAWINGS AND THE DESIGNS DEPICTED HEREIN ARE THE PROPRIETARY PROPERTY OF BRASSTECH. ANY USE OR REPRODUCTION IS SUBJECT TO THE EXPRESS APPROVAL OF BRASSTECH. UNAUTHORIZED USE IS STRICTLY PROHIBITED. ALL RIGHTS RESERVED.

TESTING	ASSEMBLY	PLATING	POLISHING	MACHINING	TOOLING FIXTURE #
-	-	-	-	-	-
		NEXT ASSY		APPLICATION	REMOVE ALL BURRS AND SHARP EDGES

UNITS ARE: INCHES [MM]	TOLERANCES ARE:
FRACTIONS DECIMALS ANGLES	$\pm 1/16''$ .X $\pm .1$ [2.5] $\pm 1^\circ$
	.XX $\pm .06$ [1.5]
(X.XXX) DENOTES CRITICAL DIMS.	ALL THREADS ARE CRITICAL
DRAWN	RAVINDRA 12/18/15
CHECKED	JINSON 12/18/15
APPROVED	J.M 01/15/16

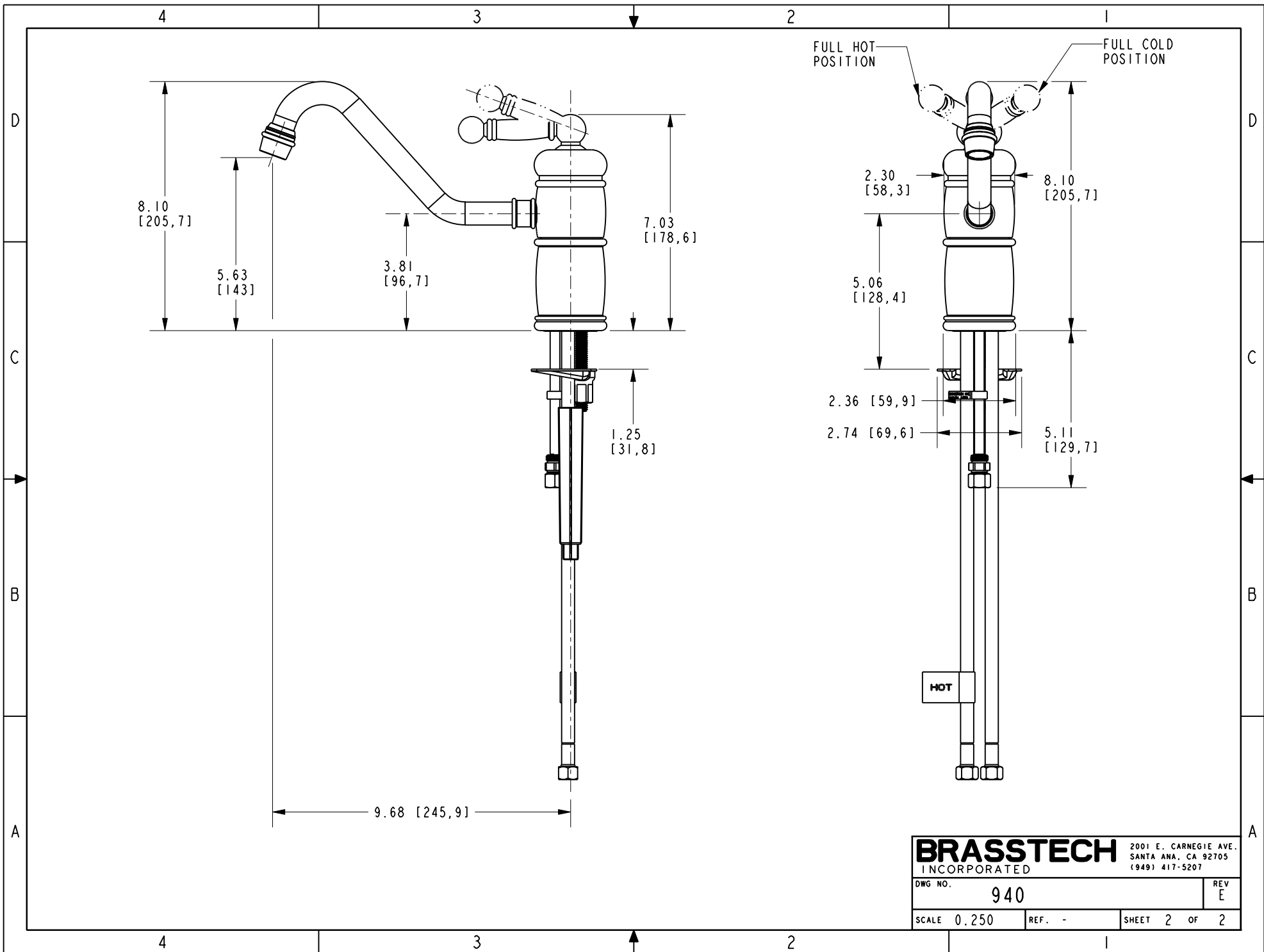
**BRASSTECH** 2001 CARNEGIE AVE. SANTA ANA, CA 92705 (949) 417-5207  
 INCORPORATED

TOP ASSY, KIT. FAUCET, SNGL HNDL

DWG NO. 940

SCALE 0.250 REF. - SHEET 1 OF 2

REV E



**BRASSTECH** 2001 E. CARNEGIE AVE.  
 INCORPORATED SANTA ANA, CA 92705  
 (949) 417-5207

DWG NO.	940	REV	E
SCALE	0.250	REF.	-
SHEET 2		OF 2	