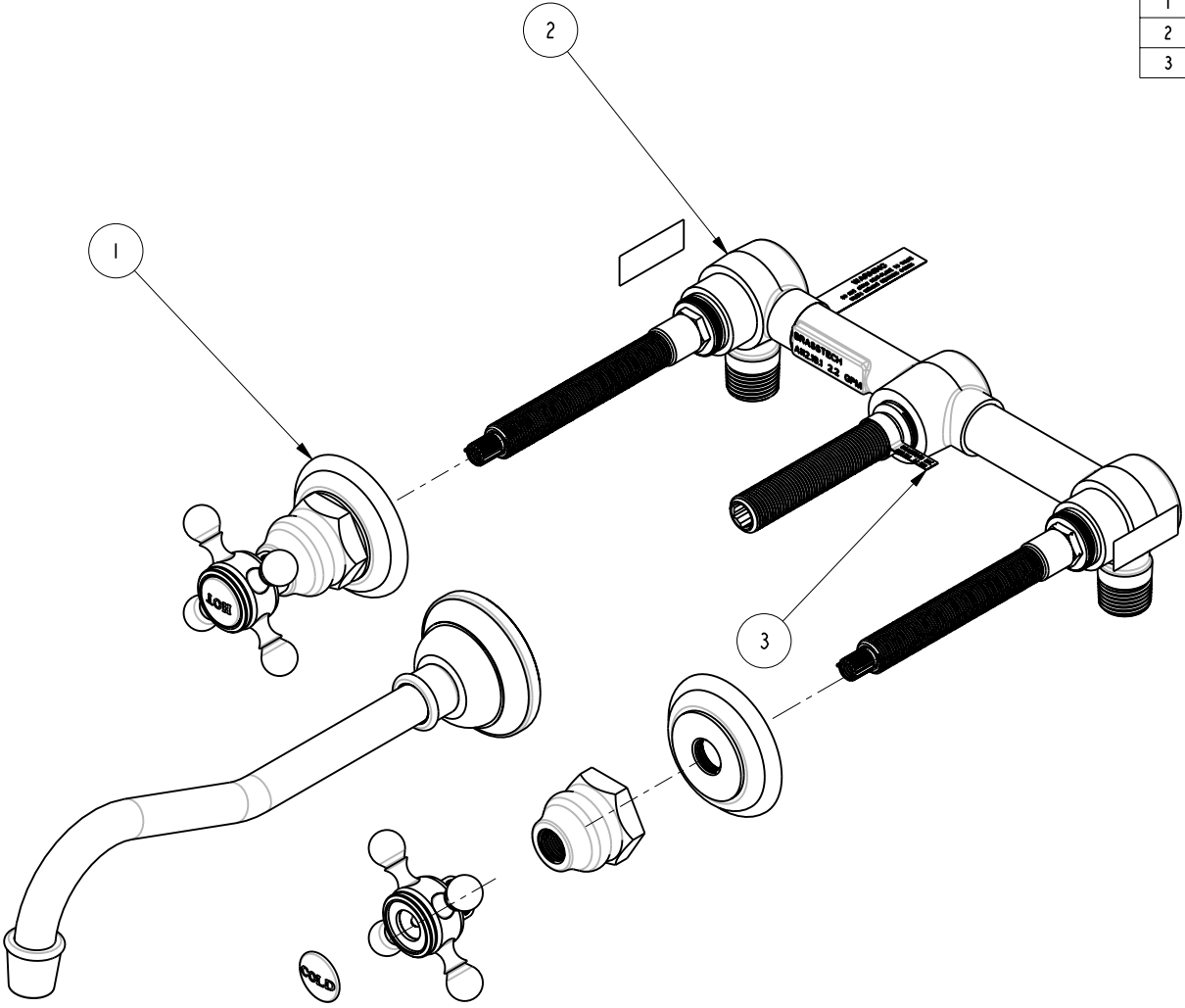
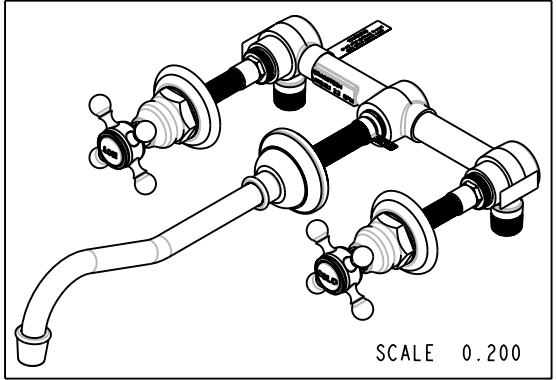


| BILL OF MATERIAL (CURRENT LEVEL) | | | | |
|----------------------------------|---------|-------------------------|----------|------|
| ITEM | PT/ASSY | DESCRIPTION | TYPE | QTY. |
| 1 | 3-944 | TRIM KIT | ASSEMBLY | 1 |
| 2 | 1-532 | WALL LAVATORY KIT | ASSEMBLY | 1 |
| 3 | 98037 | STICKER LABEL A112.18.1 | PART | 1 |



COPYRIGHT 2005 BRASSTECH, INC. THESE DRAWINGS AND THE DESIGNS DEPICTED HEREIN ARE THE PROPRIETARY PROPERTY OF BRASSTECH. ANY USE OR REPRODUCTION IS SUBJECT TO THE EXPRESS APPROVAL OF BRASSTECH. UNAUTHORIZED USE IS STRICTLY PROHIBITED. ALL RIGHTS RESERVED.

BRASSTECH
INCORPORATED
2001 E. CARNEGIE AVE.
SANTA ANA, CA 92705
(949) 417-5207

EXTENDED WALL MOUNTED LAV

| | | |
|-----------|----------|---------|
| ASSY. NO. | 944 | |
| SCALE | 0.350 | REF. - |
| SHEET | 1 | OF 3 |
| REV | REV DESC | DATE |
| B | EO-0460 | 1/17/06 |
| A | EO-0055 | 6/02 |
| - | RELEASED | 1/96 |

4

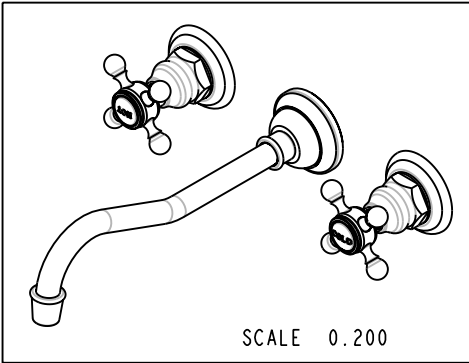
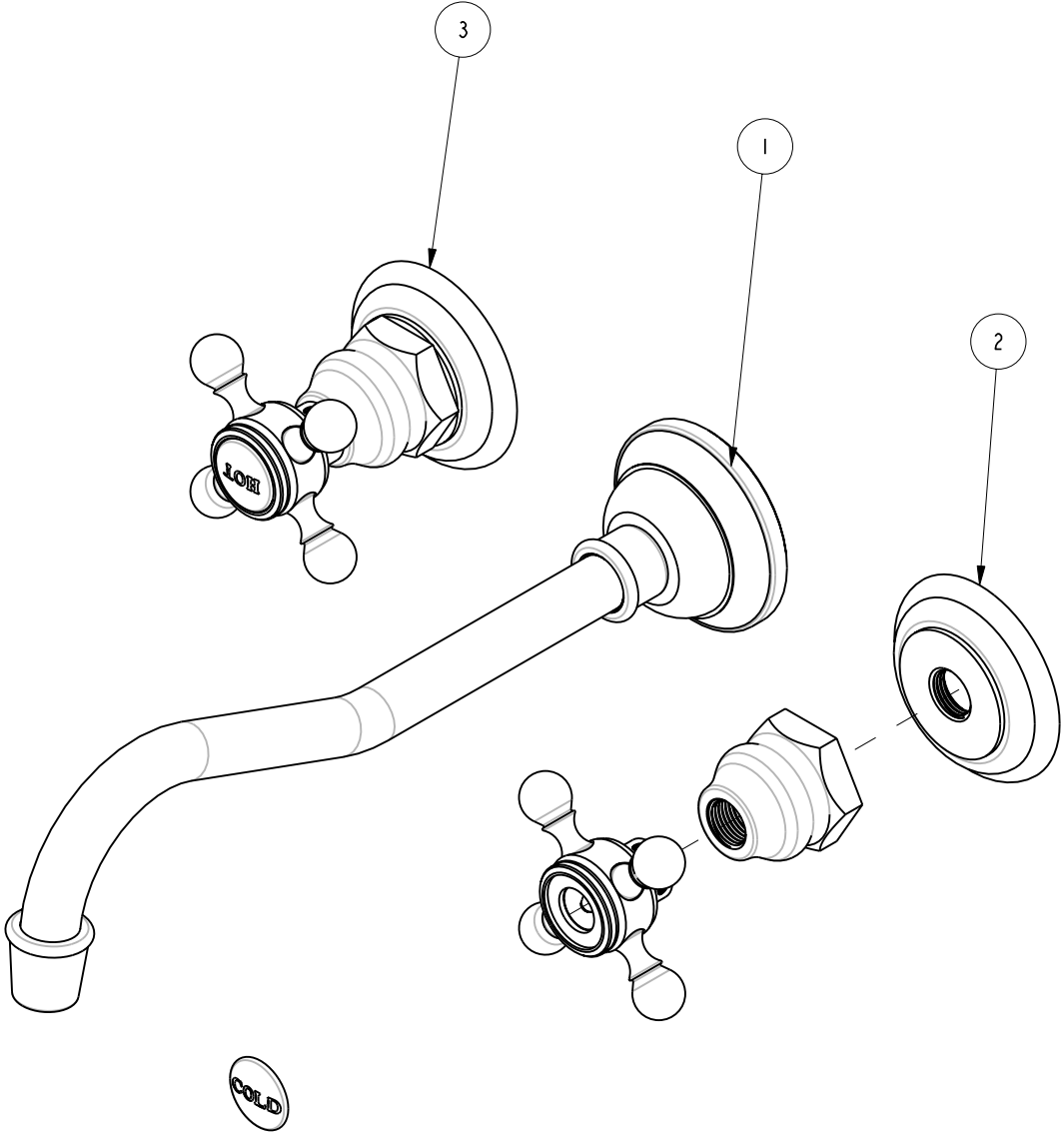
3

2

1

BILL OF MATERIAL (CURRENT LEVEL)

| ITEM | PT/ASSY | DESCRIPTION | TYPE | QTY. |
|------|---------|------------------------------|----------|------|
| 1 | 2-213 | SPOUT FOR 944 | ASSEMBLY | 1 |
| 2 | 3-163C | TRIM KIT - HANDLE/ESCUTCHEON | ASSEMBLY | 1 |
| 3 | 3-163H | TRIM KIT - HANDLE/ESCUTCHEON | ASSEMBLY | 1 |



COPYRIGHT 2005 BRASSTECH, INC. THESE DRAWINGS AND THE DESIGNS DEPICTED HEREIN ARE THE PROPRIETARY PROPERTY OF BRASSTECH. ANY USE OR REPRODUCTION IS SUBJECT TO THE EXPRESS APPROVAL OF BRASSTECH. UNAUTHORIZED USE IS STRICTLY PROHIBITED. ALL RIGHTS RESERVED.

BRASSTECH
 INCORPORATED
 2001 E. CARNEGIE AVE.
 SANTA ANA, CA 92705
 (949) 417-5207

TRIM KIT

ASSY. NO. 944

SCALE 0.500

REF. -

SHEET 2 OF 3

| | | |
|-----|----------|---------|
| B | EO-0460 | 1/17/06 |
| A | EO-0055 | 6/02 |
| - | RELEASED | 1/96 |
| REV | REV DESC | DATE |

4

3

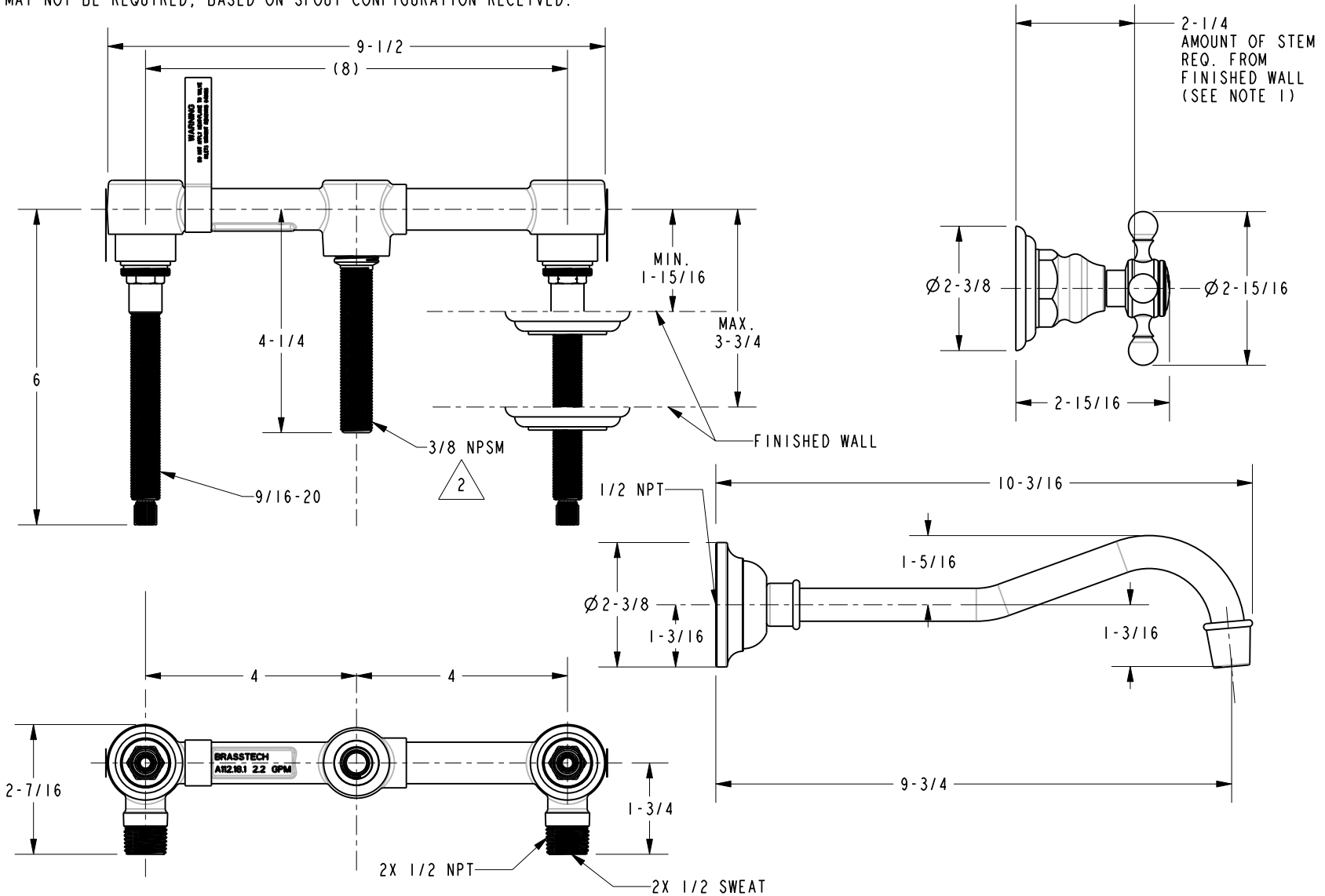
2

1

SPECIFICATION DWG

1. CUT ALL-THREAD 1/2" SHORTER THAN STEM

2. ITEM MAY NOT BE REQUIRED, BASED ON SPOUT CONFIGURATION RECEIVED.



DIMENSIONS ARE IN INCHES AND AN APPROXIMATION OF A TYPICAL INSTALLATION

COPYRIGHT 2005 BRASSTECH, INC. THESE DRAWINGS AND THE DESIGNS DEPICTED HEREIN ARE THE PROPRIETARY PROPERTY OF BRASSTECH. ANY USE OR REPRODUCTION IS SUBJECT TO THE EXPRESS APPROVAL OF BRASSTECH. UNAUTHORIZED USE IS STRICTLY PROHIBITED. ALL RIGHTS RESERVED.

| | | |
|------------------|--------|-----------------------|
| BRASSTECH | | 2001 E. CARNEGIE AVE. |
| INCORPORATED | | SANTA ANA, CA 92705 |
| | | (949) 417-5207 |
| DWG NO. | 944 | REV B |
| SCALE 0.350 | REF. - | SHEET 3 OF 3 |