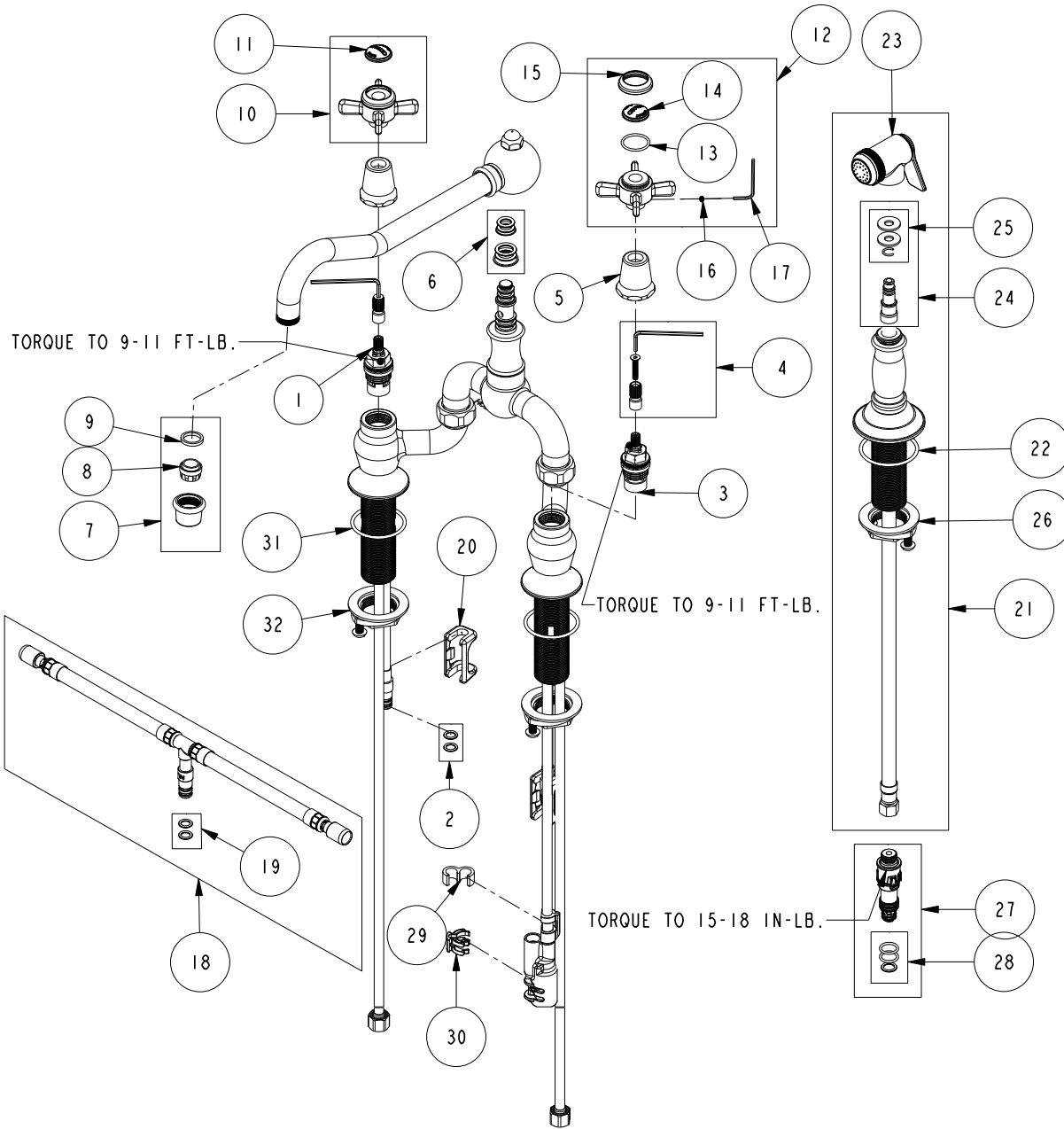


REPLACEMENT PARTS



ITEM	PT/ASSY	SPECIFY FINISH	DESCRIPTION
1	1-006		C/S VALVE CARTRIDGE - HOT
2	1-399		O-RING KIT FOR SPOUT PEX CONECTION
3	1-005		C/S VALVE CARTRIDGE - COLD
4	10-304		CARTRIDGE STEM ADAPTER KIT
5	12259	YES	HANDLE BONNET - TUB FILLER
6	10-302		SPOUT O-RING AND WASHER KIT
7	2-399	YES	AERATOR ASM BRIDGE
8	11916		AERATOR JR. INSERT-1.8 GPM
9	91500		GSKT, .578 ID X .728 OD X .102 THK EPDM
10	2-114	YES	THIN BLADE X - HANDLE HOT
11	10816		PORC BUTTON - CHAUD (HOT)
12	2-115	YES	THIN BLADE X - HANDLE COLD
13	91023		O-RING, #2- 019, EPDM, 65-75 DURO, NSF 61
14	10815		PORC BUTTON - FROID (COLD)
15	10814	YES	BEZEL
16	92000		SCREW 8 - 32 X 1/8 SS
17	10192		HEX KEY TOOL, #8 5/64
18	1-777		TEE HOSE ASSY
19	1-399		O-RING KIT FOR SPOUT PEX CONECTION
20	91568		RETAINER CLIP
21	129	YES	KITCHEN SPRAY HEAD
22	91762		O-RING, #2-132, EP, 50 DURO - GREY
23	2-119B	YES	SPRAY HEAD ASM
24	1-778		SIDE SPRAY HOSE ASSY
25	1-397		SIDE SPRAY WASHERS
26	1-393		1-1/8 18 UNEF MOUNTING KIT
27	10-303		PEX DIVERTER ASM FOR SIDE SPRAY HOSE
28	1-398		O-RING KIT FOR SIDE SPRAY PEX DIVERTER
29	91811		TEE HOSE CLIP
30	91812		DIVERTER CLIP
31	91768		O-RING, #2-130, EP, 50 DURO - GREY
32	1-393		1-1/8 18 UNEF MOUNTING KIT

KITCHEN BRIDGE FAUCET W/ SIDE SPRAY
9451-1

REV K EN-4806 04/12/24 APPROVED KN

NEWPORT BRASS.

t: 949.417.5207 | www.newportbrass.com