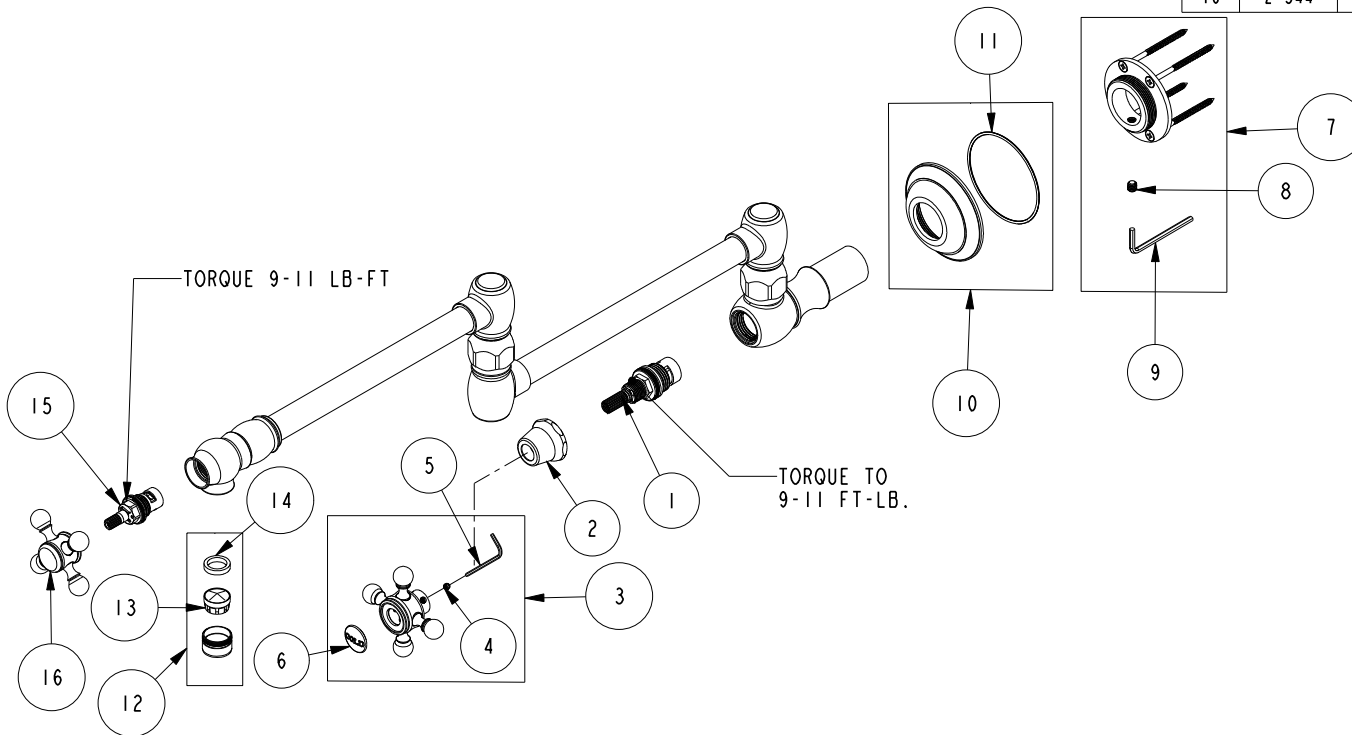


REPLACEMENT PARTS

ITEM	PT/ASSY	SPECIFY FINISH	DESCRIPTION
1	1-002		W/S CARTRIDGE - HOT
2	10331	YES	BONNET FOR 933, 934
3	2-142	YES	HANDLE ONLY, COLD
4	92000		SCREW 8 - 32 X 1/8 SS
5	10192		HEX KEY TOOL, #8 5/64
6	1-107		COLD BUTTON ASSEMBLY W/ ADHESIVE
7	10-313		MOUNTING ASM
8	92231		SCRW, 1/4-20 X 1/4 SKT HD CUP PT SS
9	92422		HEX KEY, 1/8" ALLOY STEEL
10	2-555	YES	FLANGE ASM, TRAD
11	91771		O-RING, #2-038, EPDM, 50 DURO - GREY
12	2-518	YES	AREATOR ASM
13	11346		PERLATOR AERATOR-JR SIZE-FULL FLOW
14	91293		WSHR, 13.7 ID X 18.3 OD X 3.6MM THK, FLT, RUBBER NSF 61
15	1-437		CARTR 3/8 HOT 1/4 TR
16	2-544	YES	CROSS HANDLE ASM, TRAD



POT FILLER, WALL, CROSS, TRAD
9481

REV G EN-4682 07/13/23 APPROVED RS

NEWPORT BRASS.

t: 949.417.5207 | www.newportbrass.com