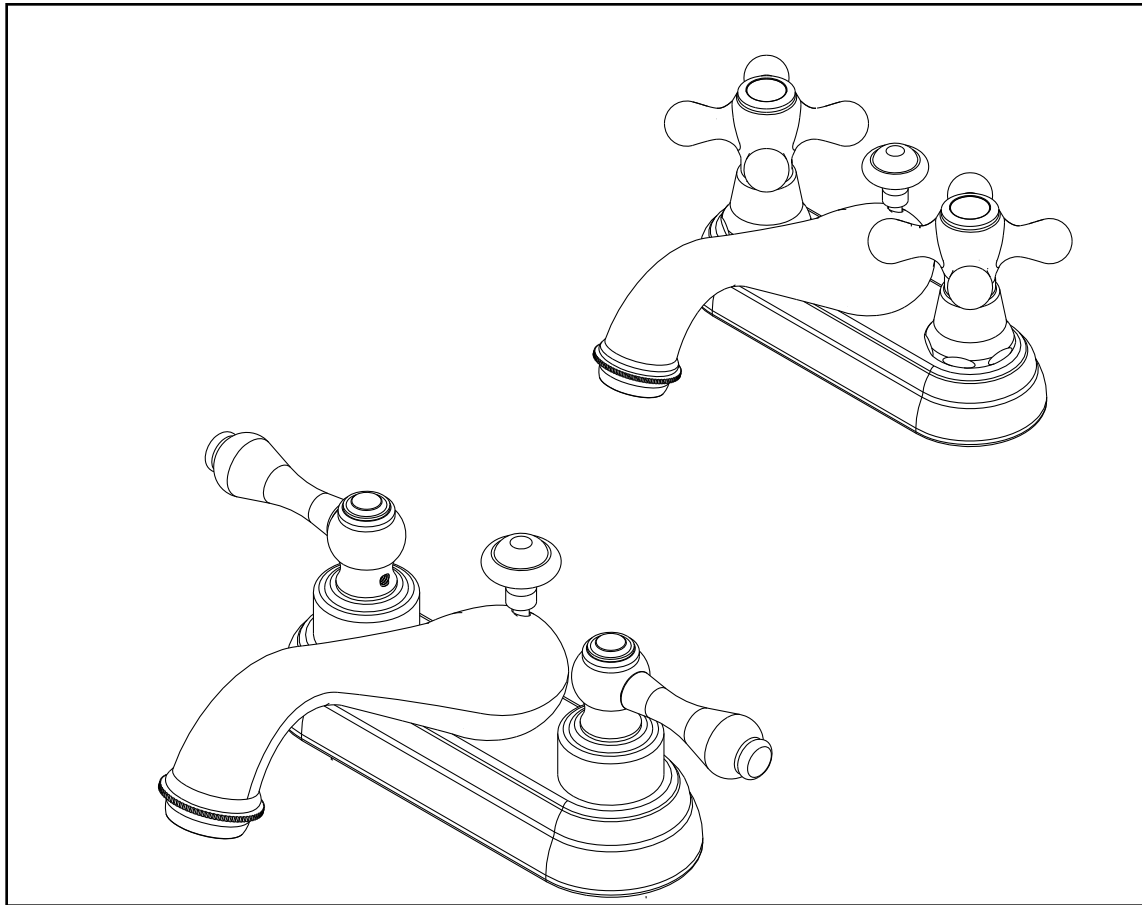


INSTALLATION INSTRUCTIONS  
CENTER SET FAUCET  
MODEL No: 7001, 7001X

NEWPORT  
365

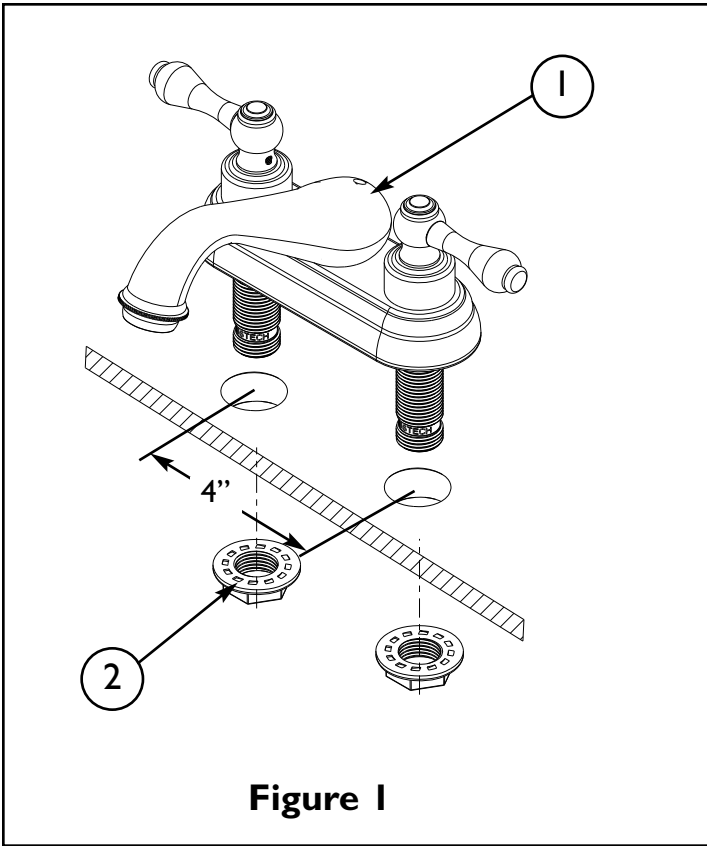


**Congratulations on the purchase  
of this Newport product,  
an excellent choice, that will give you  
years of quality service and enhance  
the look and style of your home.**

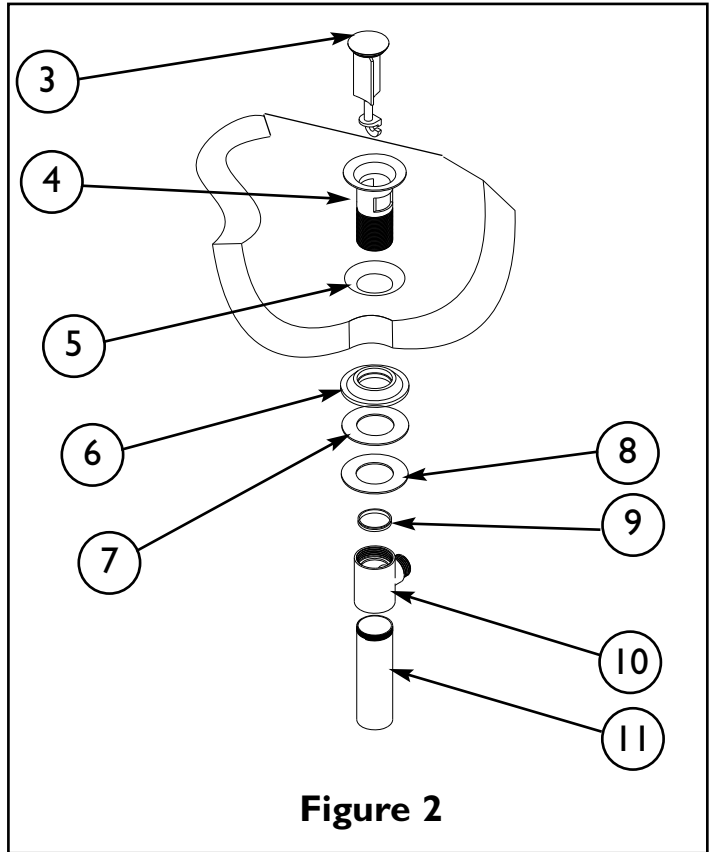
## Recommended Installation by a Professional Plumbing Contractor

**Note:** The use of petroleum base plumbers putty on our products will nullify the warranty. We recommend the use of clear silicone sealing materials. Recommended deck through hole Ø 1.25".

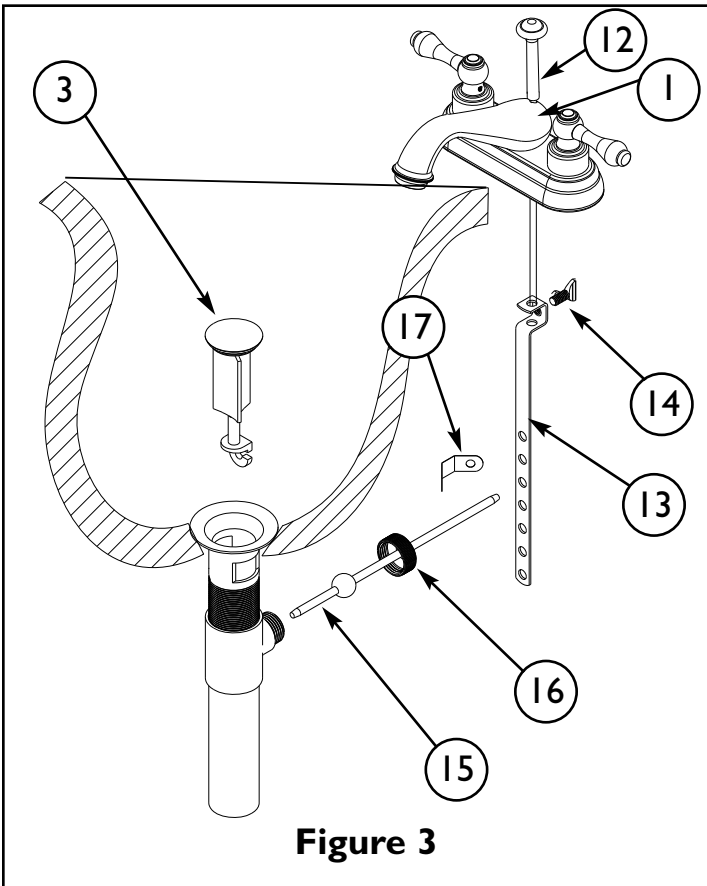
1. Place the SPOUT (1) through holes of mounting surface. Secure into place with flange NUT (2). See Figure 1.
2. Remove drain PLUG (3) from FLANGE (4). Place FLANGE (4) and white WASHER (5) through sink drain opening. (Clear silicone may be used in place of white WASHER (5)). From bottom side of sink, place cone shaped rubber WASHER (6) onto FLANGE (4) and slide up against sink bottom. Note: Cone portion of WASHER (6) to face upward. Next slide on clear flat WASHER (7) and secure with flange NUT (8). Place clear WASHER (9) into drain BODY(10) and tighten to FLANGE (4). Apply thread sealant to TAILPIECE (11) and attach to drain BODY (10). Attach TAILPIECE (11) to p-trap drain (not included). See Figure 2.
3. Place drain PLUG (3) into FLANGE (4). Insert pop-up ROD (12) through SPOUT (1) and secure to STRAP (13), approximately 1" from end of ROD (12), with SCREW (14). Insert ball ROD (15) into the drain's rod opening, secure with ball rod NUT (16). Adjust the rise of the plunger and CLIP (17) into place. Adjust ball ROD (15) and pop-up ROD (12) so drain will open and close properly. See Figure 3.
4. Connect water supply hoses (not included) to supply NIPPLE (18), utilizing WASHER (19), nosecone WASHER (20), and slip joint NUT (21). Risers and the mounting hardware (19, 20 & 21) not included. See Figure 4.
5. Remove AERATOR (22) from SPOUT (1), turn on water supply, and flush both valves until water is clear. Check for leaks and make any final adjustments required. Re-attach AERATOR (22) to the SPOUT (1).



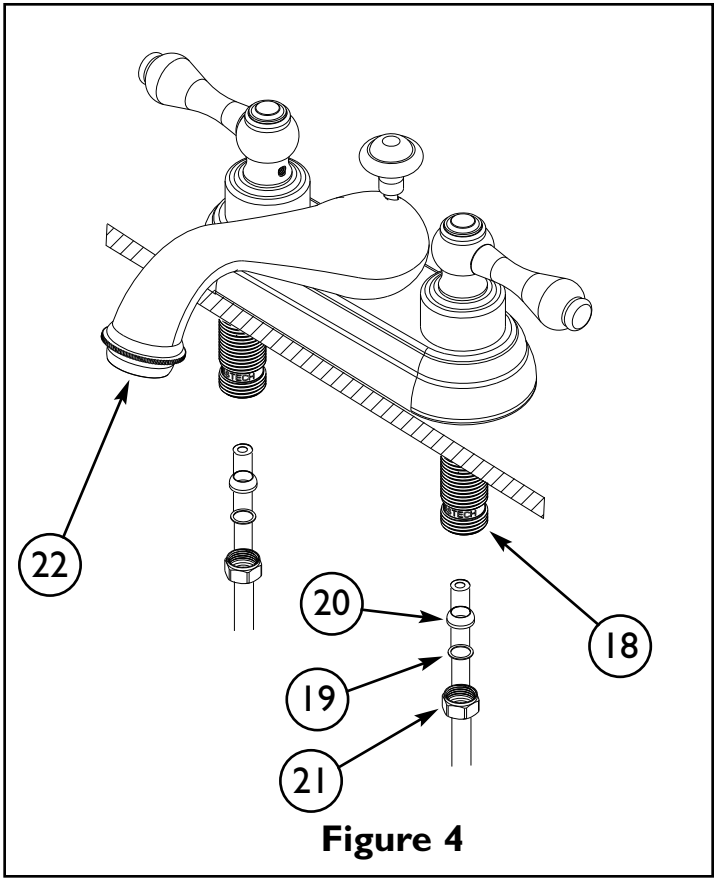
**Figure 1**



**Figure 2**



**Figure 3**



**Figure 4**