

NEWPORT BRASS

VALVES / MISC

FREESTANDING TUB FILLER ROUGH

I-339

Features

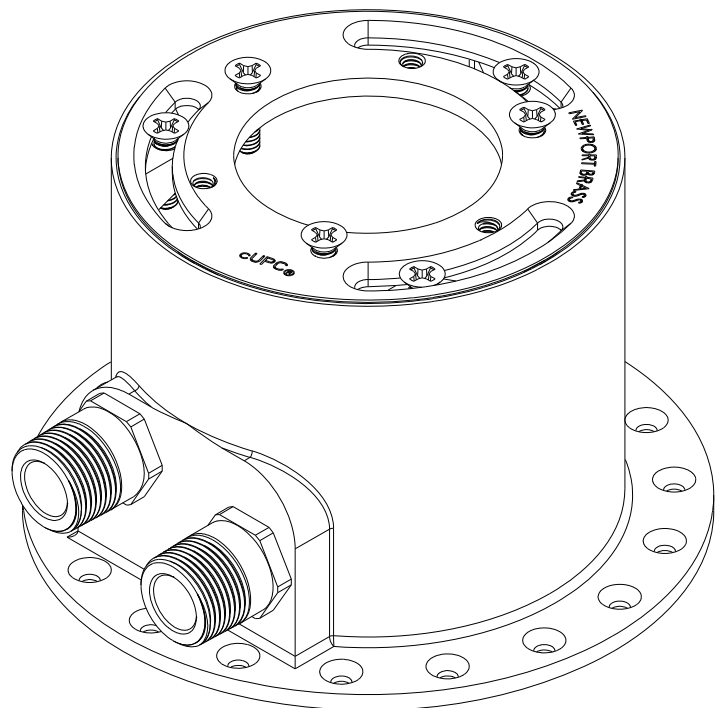
- 4.53" overall height
- 7.20" overall base diameter
- Universal 3/4" NPT and 1/2" direct sweat connections
- Test caps included
- Use with Newport Free Standing Tub Filler
- For subfloor and concrete floor installation



Codes / Standards Compliance

Meets or exceeds the following at date of manufacture:

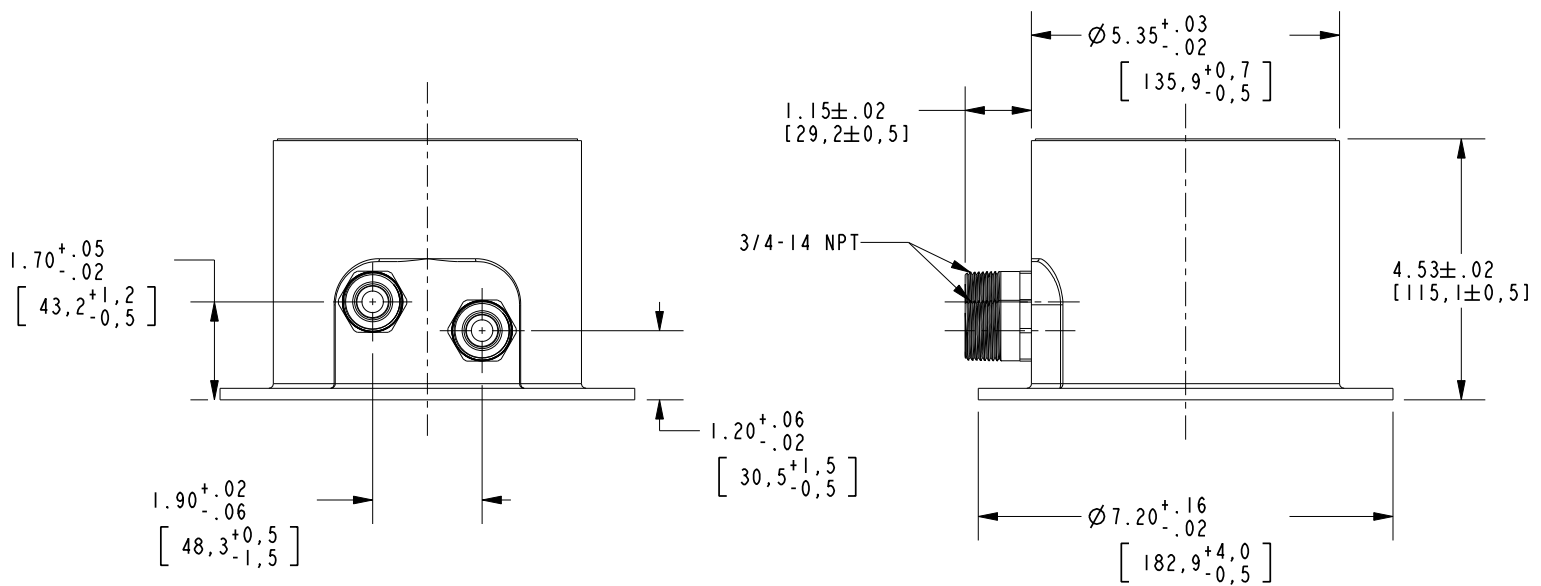
- ASME A112.18.1/CSA B125.1
- IAMPO/cUPC
- IPC
- All applicable US Federal and State material regulations



NEWPORT BRASS

PRODUCT DIMENSIONS *(Units are in inches)*

Product Dimensions are provided for reference only. For specific product installation guidelines, please reference the Installation Instructions of the product being installed.



FREESTANDING TUB FILLER ROUGH

I-339