

# ANNABELLA

## Double Robe Hook

# 10-13

### Features

- Solid brass construction
- Complements Annabella product series

### Codes / Standards Compliance

Meets or exceeds the following at date of manufacture:

- All applicable US Federal and State material regulations

### Colors / Finishes

- 10B: Oil Rubbed Bronze
- 15: Polished Nickel
- 15S: Satin Nickel - PVD
- 26: Polished Chrome
- Other: Refer to the Newport Brass catalog for additional color/finish options.



### Specified Model

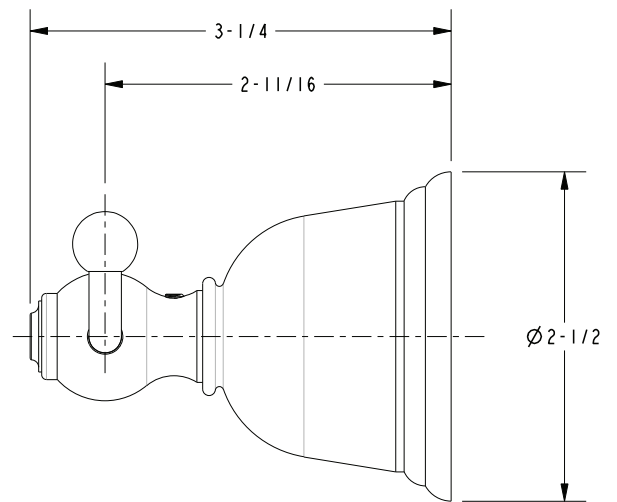
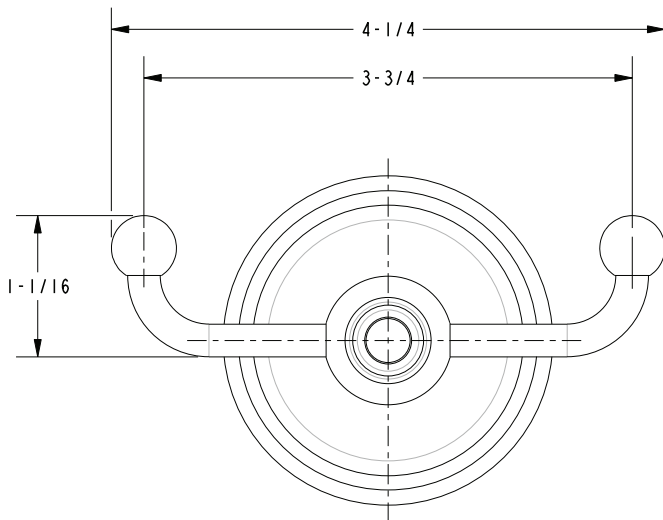
Model	Description	Colors   Finishes
10-13	Double Robe Hook	<input type="checkbox"/> 10B <input type="checkbox"/> 15 <input type="checkbox"/> 15S <input type="checkbox"/> 26 <input type="checkbox"/> Other

### Product Specification: Add size designator and "Color / Finish" suffix to Model number, below.

The Double Robe Hook shall be made of solid brass construction. Double Robe Hook shall complement Newport Brass Annabella product series. Double Robe Hook shall be Newport Brass Model 10-13/\_\_\_\_\_.

# 10-13

## PRODUCT DIMENSIONS *(Units are in inches)*



---

**Annabella Double Robe Hook**  
**10-13**