

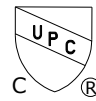
## EAST LINEAR

### Features

Solid brass construction  
Forged brass body  
Swivel spout assembly with side mounted handle  
Independent rotational and pivoting lever handle elements  
Spout assembly with integral supply hoses  
7.79" (19.8 cm) spout height at outlet  
7.13" (18.1 cm) spout reach (c-c)  
For single hole configurations  
ADA Compliant  
1.8 GPM (6.8 LPM) Max

SINGLE HOLE - BAR / PREP FAUCET

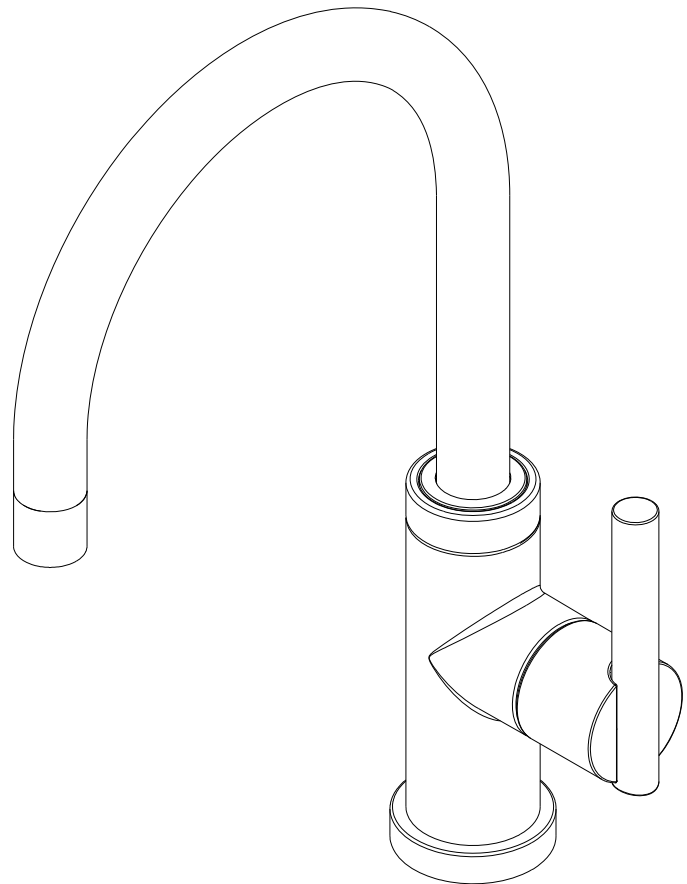
# 1500-5233



### Codes / Standards Compliance

Meets or exceeds the following at date of manufacture:

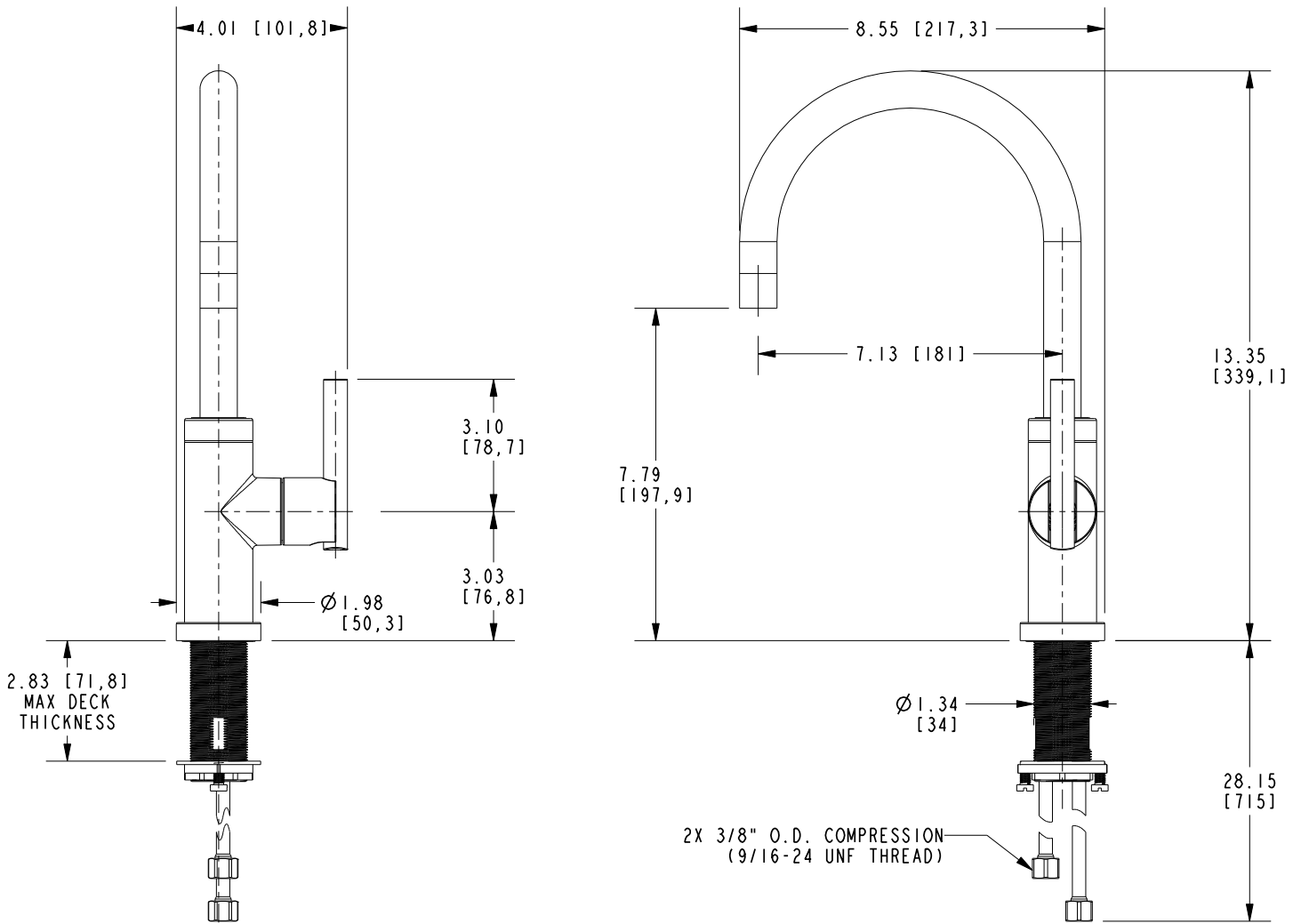
ASME A112.18.1/CAS B125.1  
IAPMO/cUPC  
NSF/ANSI/CAN 61, SECTION 9  
NSF/ANSI 372  
IPC  
ADA&ICC/ANSI A117.1  
Energy Policy Act of 1992  
EPA Watersense  
California Energy Commission  
All applicable US Federal and State material regulations



# 1500-5233

## PRODUCT DIMENSIONS *(Units are in inches)*

Product Dimensions are provided for reference only. For specific product installation guidelines, please reference the Installation Instructions of the product being installed.



SINGLE HOLE - BAR / PREP FAUCET

1500-5233

Page 2 of 2  
EN-4745  
REVA

**NEWPORT BRASS**  
Flawless Beauty. From Faucet to Finish.

t: 949.417.5207 | [www.newportbrass.com](http://www.newportbrass.com)  
©2023 Brasstech, Inc.