

Features

Solid brass construction
Quarter-turn washerless ceramic disc valve cartridges
3/4" NPT hot and cold inlet fittings
8.84" (22.4 cm) to 10.12" (25.7 cm) tub spout reach (wall-center)
2.08" (5.3 cm) handshower diameter
For wall mounted configurations, all is included
"For floor mounted configurations, select optional accessories, below"
ADA Compliant (Handles Only)
1.8 GPM (6.8 LPM) Max, Handshower Only

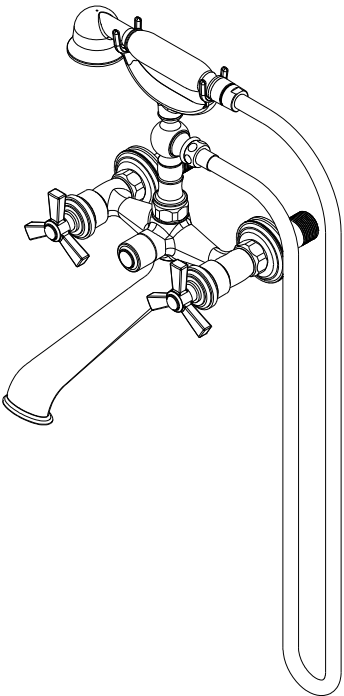
Codes / Standards Compliance



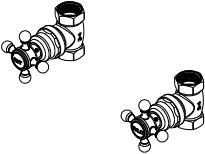
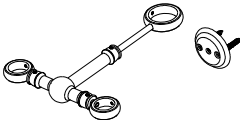
Meets or exceeds the following at date of manufacture:

ASME A112.18.1/CSA B125.1
IAPMO/cUPC
IPC
ADA & ICC/ANSI A117.1 (Handle Only)
Energy Policy Act of 1992
EPA WaterSense
California Energy Commission
ASME A112.18.3 (Back Flow)
All applicable US Federal and State material regulations

TUB AND HANDSHOWER SET

1600-4282

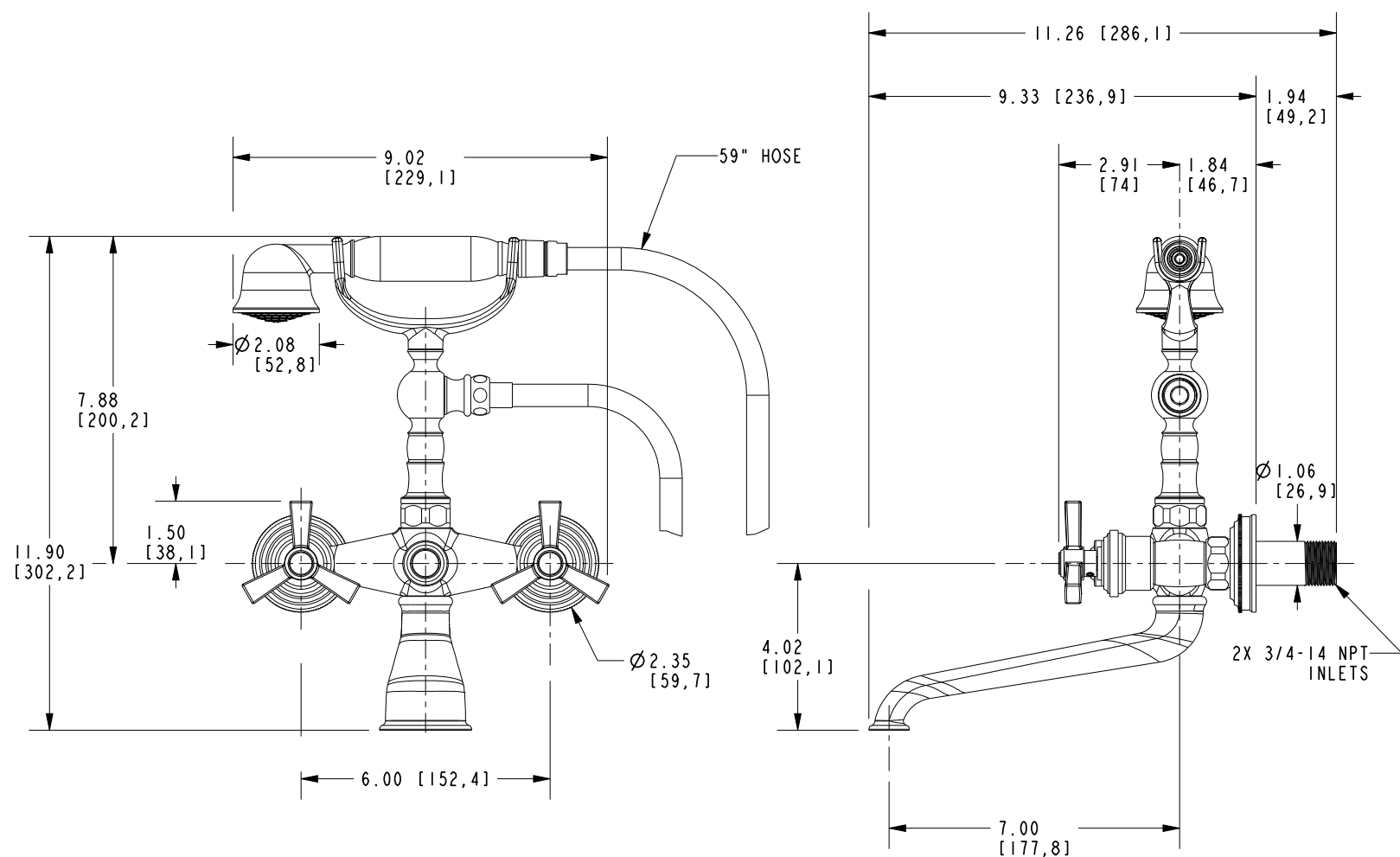


Optional Accessory:				
System Element	31" Risers	24" Risers	Pair, Hot & Cold	Stabilizer
Description	Floor Mounting Kit	Floor Mounting Kit	Shut-off Valve Set	Tub Stabilizer Kit
Inlet/Outlet Size	3/4" / 3/4" NPT	3/4" / 3/4" NPT	3/4" / 3/4" NPT	-
Part Number	3-196	3-226	3-192	2-734
Image				

1600-4282

PRODUCT DIMENSIONS *(Units are in inches)*

Product Dimensions are provided for reference only. For specific product installation guidelines, please reference the Installation Instructions of the product being installed.



TUB AND HANDSHOWER SET

1600-4282

Page 2 of 2

EN- 5011

REVE

NEWPORT BRASS
Flawless Beauty. From Faucet to Finish.

t: 949.417.5207 | www.newportbrass.com
©2025 NewportBrass