

NEWPORT BATH

Features

- Solid brass construction
- 1/2" NPT Inlet
- 1.75" x 2.20" integral flange
- Complements Metro product series

Shower Arm with Flange

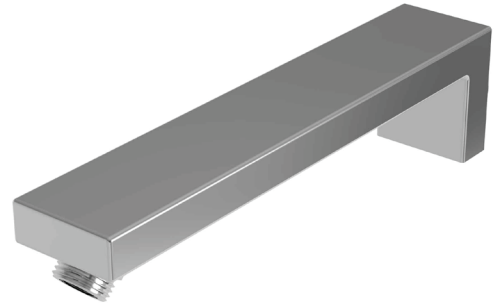
201-2



Codes / Standards Compliance

Meets or exceeds the following at date of manufacture:

- ASME A112.18.1/CSA B125.1
- IAMPO/cUPC
- IPC
- All applicable US Federal and State material regulations



Colors / Finishes

- 10B: Oil Rubbed Bronze
- 15: Polished Nickel
- 15S: Satin Nickel - PVD
- 26: Polished Chrome
- Other: Refer to the Newport Brass catalog for additional color/finish options.

Specified Model

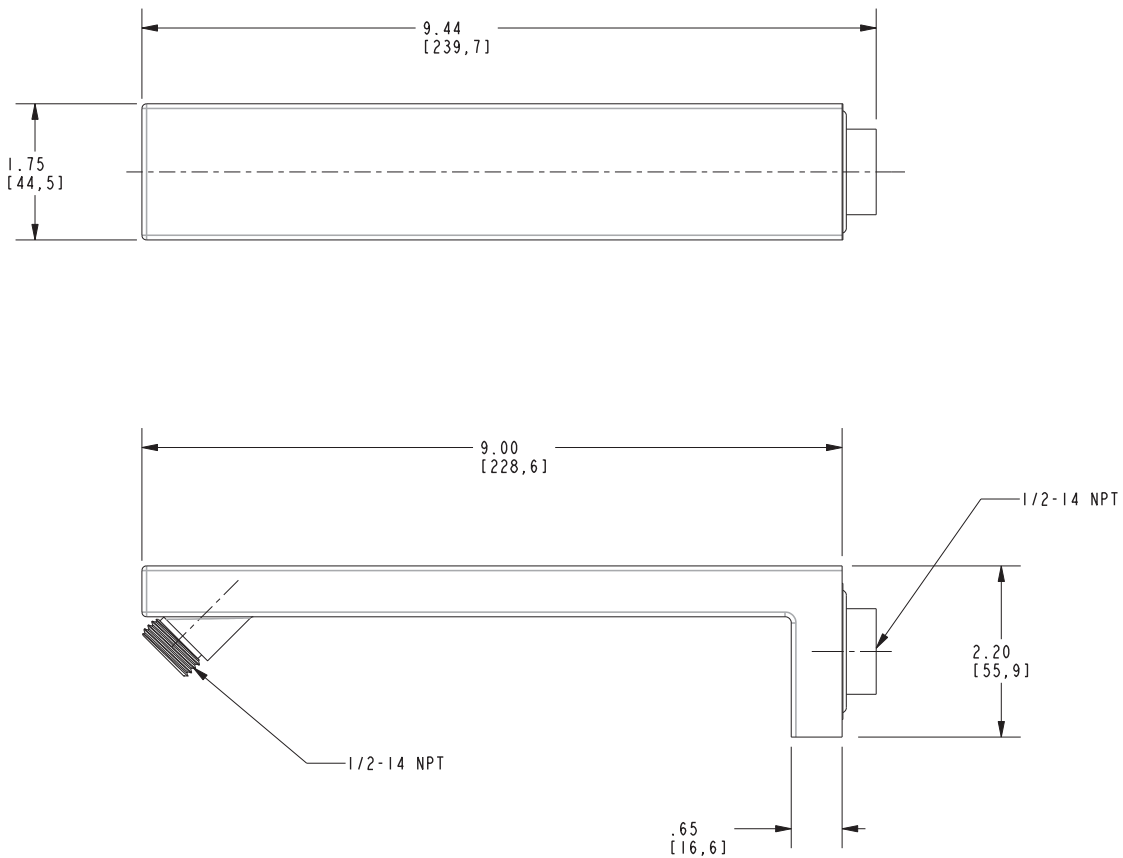
Model	Description	Colors Finishes				
201-2	8" Shower Arm with Integral Flange	<input type="checkbox"/> 10B	<input type="checkbox"/> 15	<input type="checkbox"/> 15S	<input type="checkbox"/> 26	<input type="checkbox"/> Other

Product Specification Add "Color / Finish" suffix to Model number, below.

The Shower Arm with Flange shall be made of solid brass construction. Product shall incorporate 1/2" NPT inlet and have an approximate length of 9.00". Product shall have an integral flange covering a 1.75" x 2.20" area of the wall. Product shall complement Metro product series. Shower Arm with Flange shall be Newport Brass Model 201-2/_____.

201-2

Product Dimensions are provided for reference only. For specific product installation guidelines, please reference the Installation Instructions of the product being installed.



Newport Bath Shower Arm with Flange 201-2