

**Toilet Tissue Holder**  
**2020-1500**

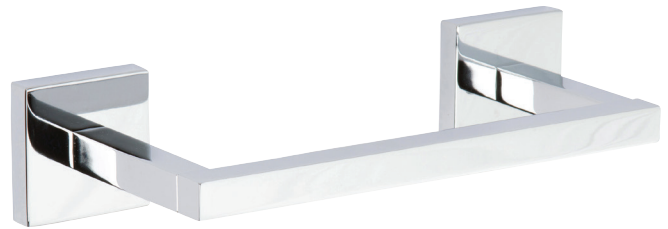
**Features**

- Solid metal construction
- Double-post design with pivoting roller
- Complements Skylar product series

**Codes / Standards Compliance**

Meets or exceeds the following at date of manufacture:

- All applicable US Federal and State material regulations



**Colors / Finishes**

- 10B: Oil Rubbed Bronze
  - 15: Polished Nickel
  - 15S: Satin Nickel - PVD
  - 26: Polished Chrome
- Other: Refer to the Newport Brass catalog for additional color/finish options.

**Specified Model**

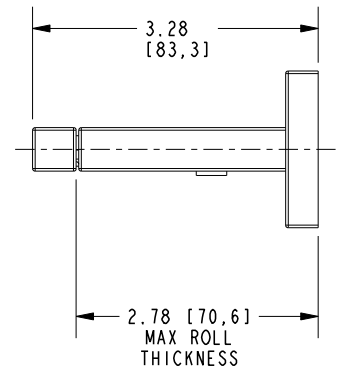
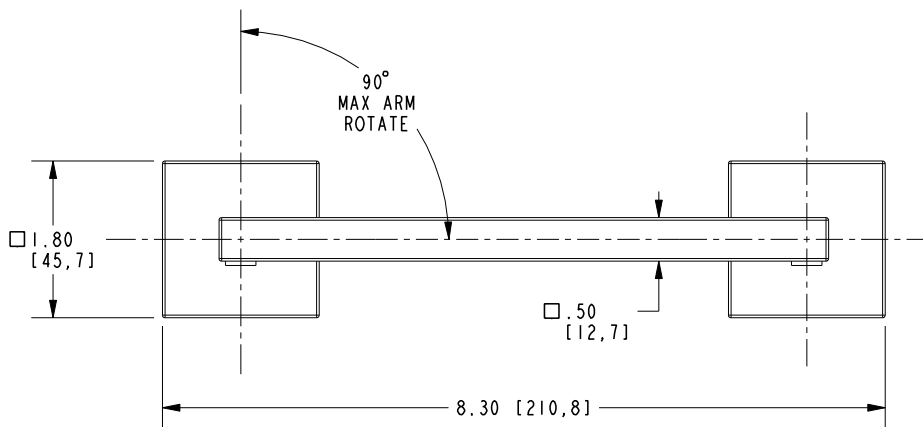
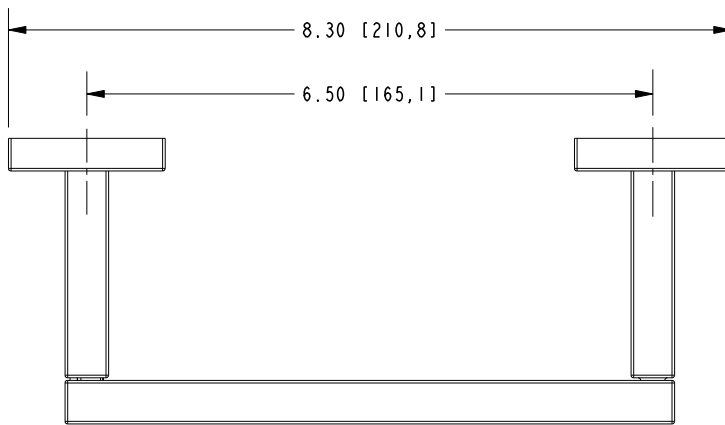
Model	Description	Colors   Finishes				
2020-1500	Toilet Tissue Holder	<input type="checkbox"/> 10B	<input type="checkbox"/> 15	<input type="checkbox"/> 15S	<input type="checkbox"/> 26	<input type="checkbox"/> Other

**Product Specification** Add "Color / Finish" suffix to Model number, below.

The Toilet Tissue Holder shall be made of solid metal construction and incorporate a double-post design utilizing a pivoting roller. Toilet Tissue Holder shall complement Newport Brass Skylar product series. Toilet Tissue Holder shall be Newport Brass Model 2020-1500/\_\_\_\_\_.

# 2020-1500

## PRODUCT DIMENSIONS *(Units are in inches)*



### Skylar Toilet Tissue Holder 2020-1500