

# NEWPORT BRASS

## PRIYA

### SINGLE HOLE VESSEL FAUCET

# 2413

#### Features

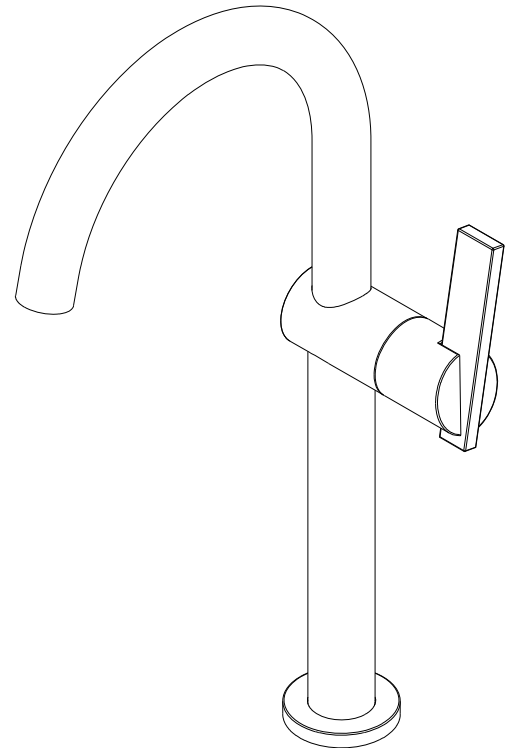
- Solid brass construction
- Brass body with side-mounted handle
- Euro-motion ceramic disc 25 mm valve cartridge
- Spout assembly with integral supply hoses
- 10.66" (27.1 cm) spout height at outlet
- 6.25" (15.9 cm) spout reach (c-c)
- For single hole configurations
- ADA compliant
- 1.2 GPM (4.5 LPM) Max



#### Codes / Standards Compliance

Meets or exceeds the following at date of manufacture:

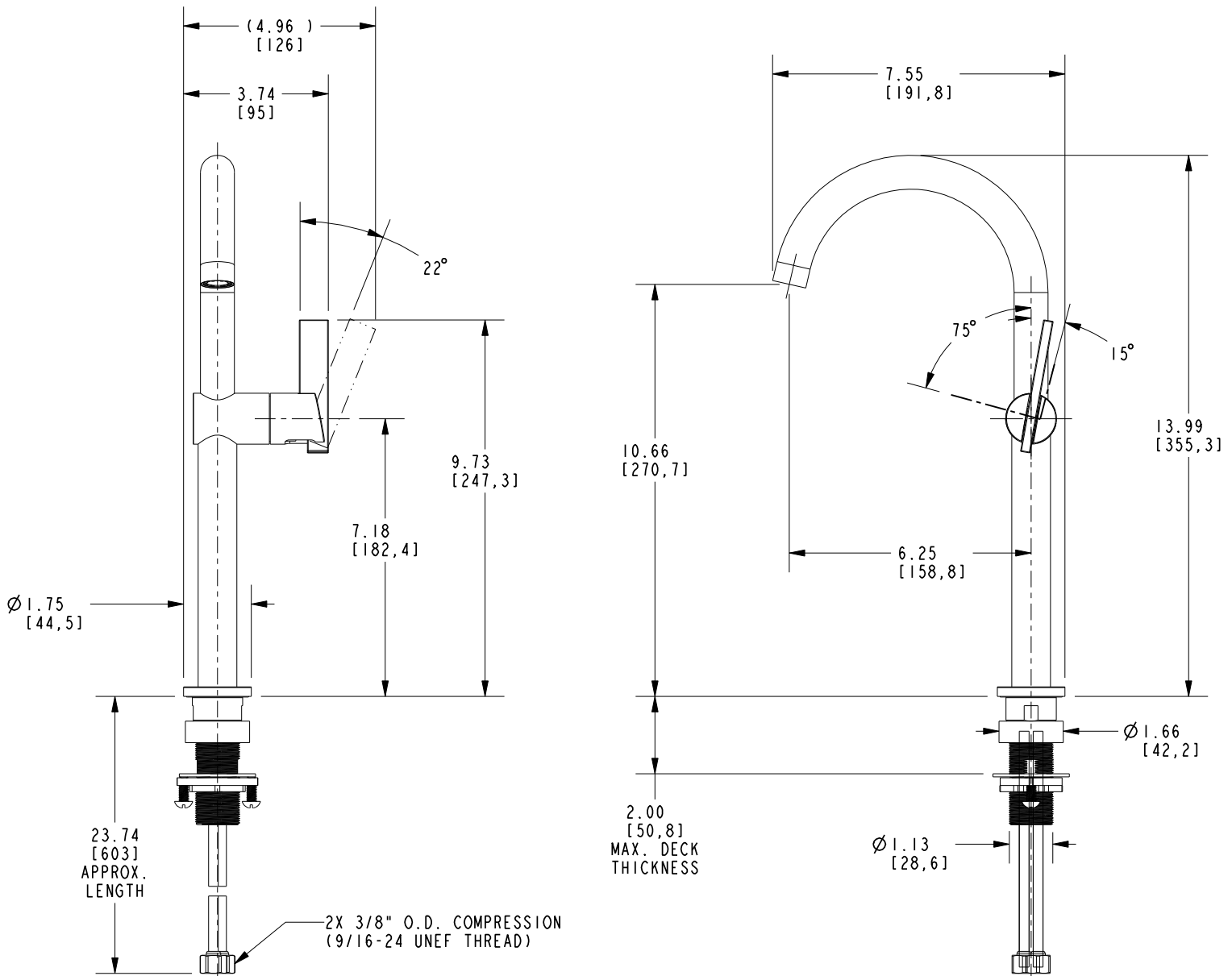
- ASME A112.18.1/CSA B125.1
- IAPMO/cUPC
- NSF/ANSI/CAN 61, SECTION 9
- NSF/ANSI 372
- IPC
- ADA & ICC/ANSI A117.1
- Energy Policy Act of 1992
- EPA WaterSense
- California Energy Commission
- All applicable US Federal and State material regulations



# NEWPORT BRASS

## PRODUCT DIMENSIONS *(Units are in inches)*

Product Dimensions are provided for reference only. For specific product installation guidelines, please reference the Installation Instructions of the product being installed.



## SINGLE HOLE VESSEL FAUCET

# 2413