

**Toilet Tissue Holder**  
**2540-1570**

**Features**

- Solid brass construction
- Single-post, open roller design
- Complements Metro product series
- Right hand mounting orientation.

**Codes / Standards Compliance**

Meets or exceeds the following at date of manufacture:

- All applicable US Federal and State material regulations



**Colors / Finishes**

- 10B: Oil Rubbed Bronze
  - 15: Polished Nickel
  - 15S: Satin Nickel - PVD
  - 26: Polished Chrome
- Other: Refer to the Newport Brass catalog for additional color/finish options.

**Specified Model**

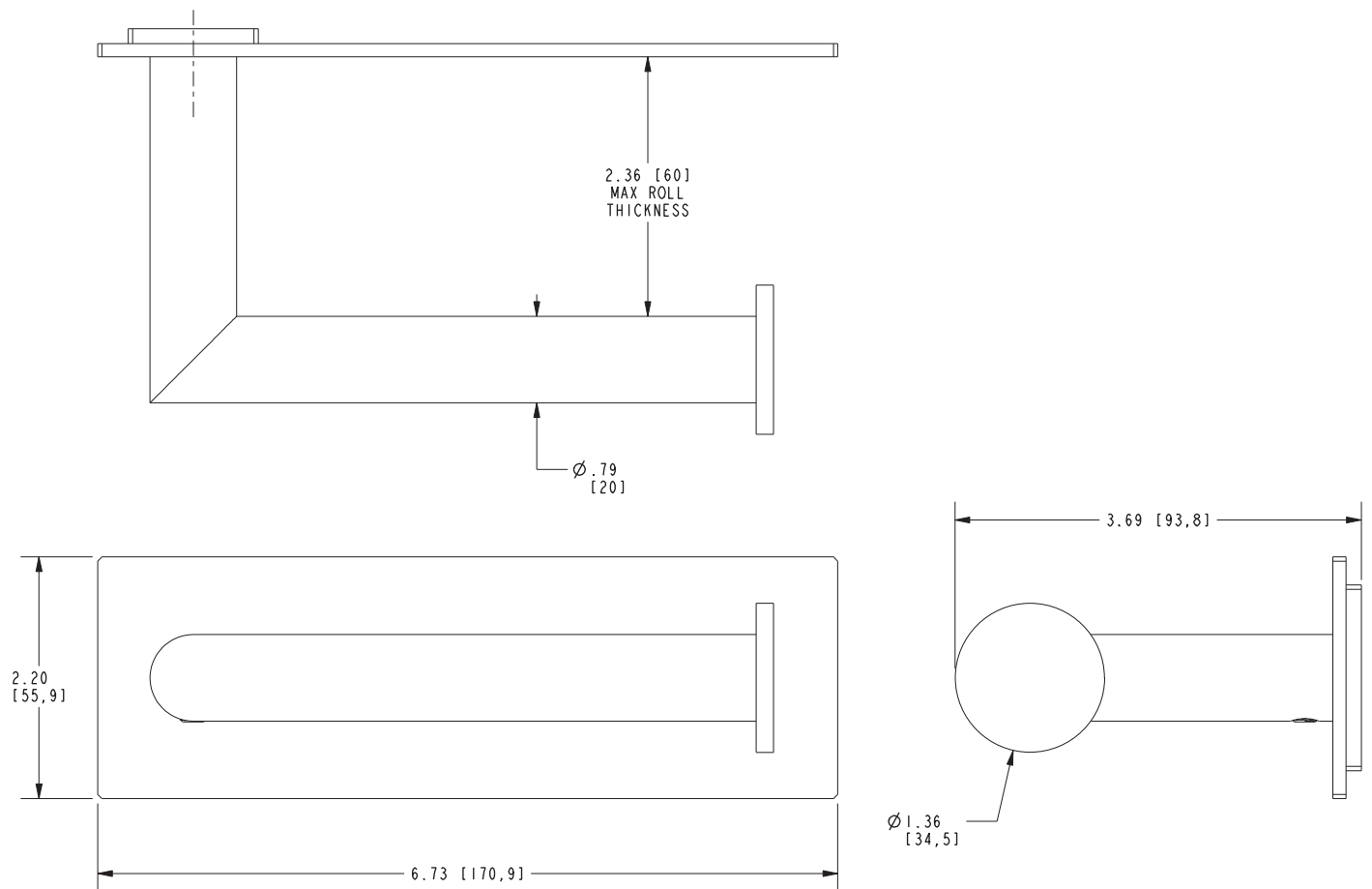
Model	Description	Colors   Finishes				
2540-1570	Open Toilet Tissue Holder	<input type="checkbox"/> 10B	<input type="checkbox"/> 15	<input type="checkbox"/> 15S	<input type="checkbox"/> 26	<input type="checkbox"/> Other

**Product Specification** Add "Color / Finish" suffix to Model number, below.

The Toilet Tissue Holder shall be made of solid brass construction and incorporate a single-post, open roller design. Toilet Tissue Holder shall complement Newport Brass Metro product series. Toilet Tissue Holder shall be Newport Brass Model 2540-1570/\_\_\_\_\_.

# 2540-1570

## PRODUCT DIMENSIONS *(Units are in inches)*



### Metro Toilet Tissue Holder 2540-1570