

SKYLAR

Features

Brass Construction
Euro-motion ceramic disc 40 mm valve cartridge
9.25 gallons (35 liters) per minute spout maximum flow rate
3/4" braided hot and cold supply lines (with 1/2" adapters)
38.02" (96.6 cm) tub spout height at outlet
7.86" (19.9 cm) tub spout reach (center-center)
Contemporary handshower design of resin construction
Floor mounting bracket with integral base and escutcheon
ADA Compliant (Handles Only)
1.8 GPM (6.8 LPM) Max, Handshower Only

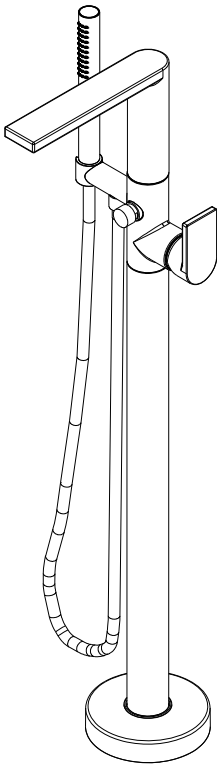
Codes / Standards Compliance

Meets or exceeds the following at date of manufacture:

ASME A112.18.1/CSA B125.1
IAPMO/cUPC
IPC
ADA & ICC/ANSI A117.1 (Handle Only)
Energy Policy Act of 1992
EPA WaterSense
California Energy Commission
ASME A112.18.3 (Back Flow)
All applicable US Federal and State material regulations

Tub and Handshower Set

2560-4261

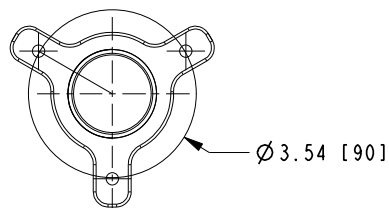
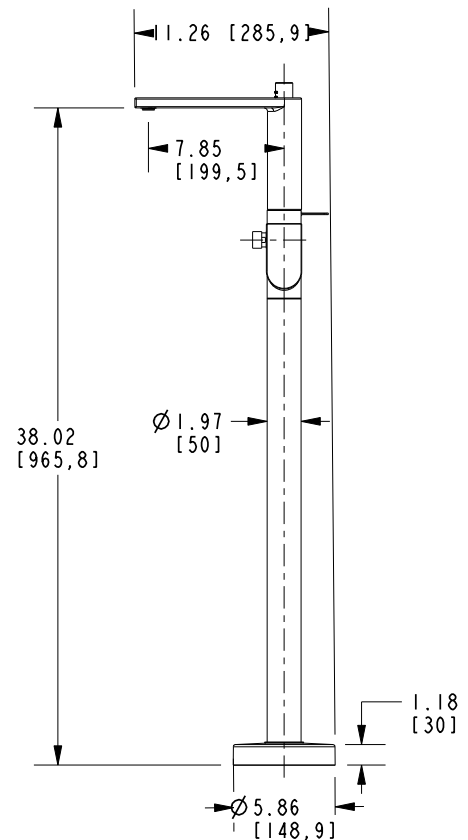
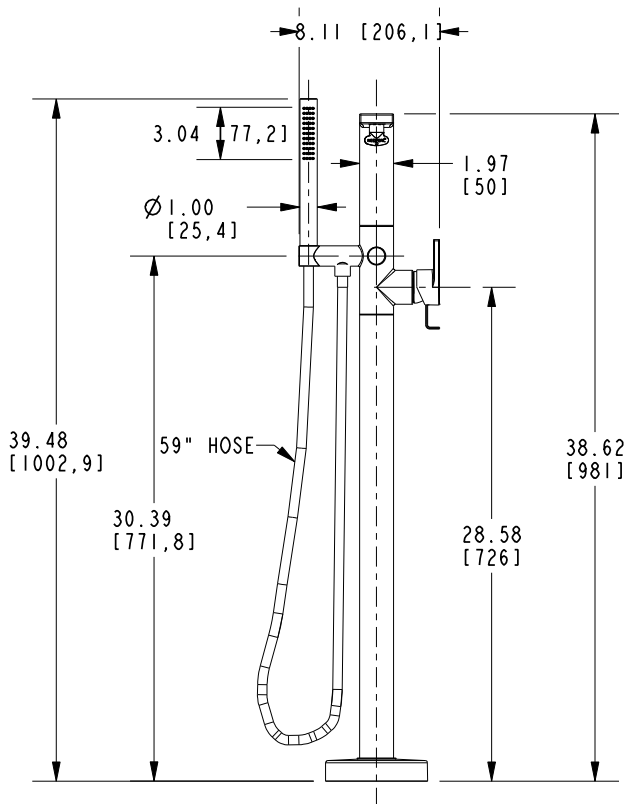


ACCESSORY OPTIONAL	
System Element	1-339
Description	Freestanding Tub Fill Rough Kit (Floor Mount)
Image	A line drawing of the Freestanding Tub Fill Rough Kit. It shows a circular floor mount with a central vertical pipe and several smaller pipes extending from the side, used for connecting to the tub's water supply.

2560-4261

PRODUCT DIMENSIONS *(Units are in inches)*

Product Dimensions are provided for reference only. For specific product installation guidelines, please reference the Installation Instructions of the product being installed.



Tub and Handshower Set

2560-4261

Page 2 of 2

EN- 5008

REV F

NEWPORT BRASS
Flawless Beauty. From Faucet to Finish.

t: 949.417.5207 | www.newportbrass.com
©2025 NewportBrass