

## Features

- Solid brass construction
- Brass valve bodies
- Quarter-turn washerless ceramic disc valve cartridges
- Spout assembly with integral supply hoses
- Pop-up drain with tailpiece
- 2.48" (6.3 cm) spout height at outlet
- 5.47" (13.9 cm) spout reach (c-c)
- For 8" (20.3 cm) centers - Maximum 20" (50.8 cm)
- ADA Compliant
- 1.2 GPM (4.5 LPM) Max

## Codes / Standards Compliance

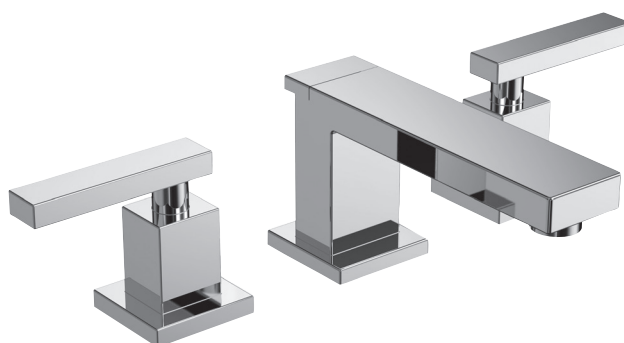
Meets or exceeds the following at date of manufacture:

- ASME A112.18.1/CSA B125.1-18
- IAPMO/cUPC
- NSF/ANSI 61, SECTION 9
- NSF/ANSI 372
- IPC
- ADA & ICC/ANSI A117.1
- Energy Policy Act of 1992
- EPA WaterSense
- California Energy Commission
- All applicable US Federal and State material regulations

## Colors / Finishes

- 10B: Oil Rubbed Bronze
- 15: Polished Nickel
- 15S: Satin Nickel - PVD
- 26: Polished Chrome
- Other: Refer to the Newport Brass catalog for additional color/finish options.

## Widespread Lavatory Faucet 2560



## Specified Model

Model	Description	Colors   Finishes				
2560	Widespread Lavatory Faucet	<input type="checkbox"/> 10B	<input type="checkbox"/> 15	<input type="checkbox"/> 15S	<input type="checkbox"/> 26	<input type="checkbox"/> Other

## Product Specification Add "Color / Finish" suffix to Model number, below.

The two-handle Widespread Lavatory Faucet shall be made of solid brass construction. Faucet shall incorporate a spout assembly with integral supply hoses and feature brass valve bodies with quarter-turn washerless ceramic disc valve cartridges. Faucet shall have a 1.2 gallon (4.5 liter) per minute maximum flow rate. Product shall be for 8" (20.3 cm) centers - Maximum 20" (50.8 cm). Product shall incorporate a 2.48" (6.3 cm) spout height at outlet and a 5.47" (13.9 cm) spout reach (c-c). Faucet shall include a pop-up drain with tailpiece and incorporate ADA compliant contemporary lever handles. Widespread Lavatory Faucet shall be Newport Brass Model 2560/\_\_\_\_.

### PRODUCT DIMENSIONS *(Units are in inches)*

4.00 [101.6] MIN  
10.00 [254.0] MAX

4.00 [101.6] MIN  
10.00 [254.0] MAX

3.00 [76.2]

3.05 [77.5]

2.10 [53.3]

2.15 [54.6]

1.42 [36]  
AMOUNT OF STEM  
REQ. FROM DECK

2.25 [57.2]  
MAX DECK  
THICKNESS

1.50 [38.1]  
MAX DECK  
THICKNESS

Ø .31 [7.9]

Ø 1.34 [33.9]

Ø 1.00 [25.4]

2X 1/2 NPSM  
OUTLETS

2X 1/2 NPSM  
INLETS

7.25 [184.1]

2.48 [63]

3.46 [87.9]

5.47 [139]

t: 949.417.5207 | [www.newportbrass.com](http://www.newportbrass.com)  
©2020 Brasstech, Inc.